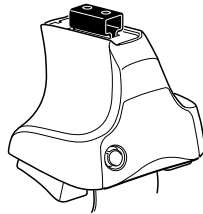


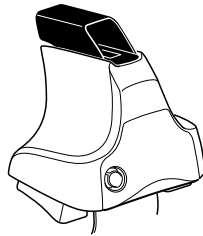
Kit 1643

VOLKSWAGEN Touareg, 5-dr SUV, 10-*

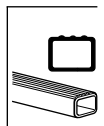
*Without railing



754 Rapid System
480R Rapid Traverse (North America)



480 Traverse (North America)



- 754 Rapid System: x1 (box), x4 (ruler), x4 (480R Rapid Traverse), x4 (screwdriver), x4 (screws)
- 480R Rapid Traverse (North America): x1 (ruler), x4 (480 Traverse), x4 (screwdriver), x4 (screws)

(North America)

- x2 (long bar)
- x2 (short bar)
- x2 (23 mm bar)
- x2 (23 mm bar)
- x4 (screw)
- x4 (screw)
- x1 (17 mm bar)
- x2 (23 mm bar)
- x2 (23 mm bar)
- x2 (23 mm bar)
- x4 (screw)
- x4 (screw)
- x2 (short bar)
- x2 (long bar)

- x4 (1158)
- x4 (271)
- x1 (diagram)

1



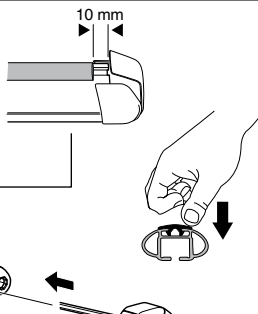
2



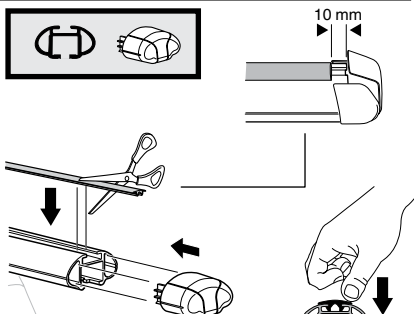
754 Rapid System
480R Rapid Traverse
(North America)



x4



x4



x4



480 Traverse
(North America)

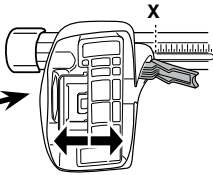


x4

3



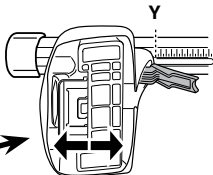
754 Rapid System



VOLKSWAGEN Touareg, 5-dr SUV, 10- (Without railing)

X

51

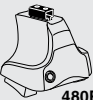


VOLKSWAGEN Touareg, 5-dr SUV, 10- (Without railing)

Y

45

3



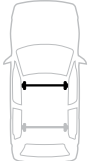
480R Rapid Traverse



480 Traverse



(North America)



VOLKSWAGEN Touareg, 5-dr SUV, 10- (Without railing)

X inch

X mm

45 ³/₄"

1161 mm



VOLKSWAGEN Touareg, 5-dr SUV, 10- (Without railing)

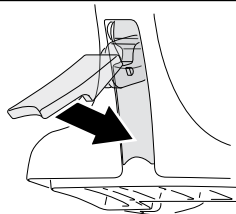
Y inch

Y mm

43 ³/₈"

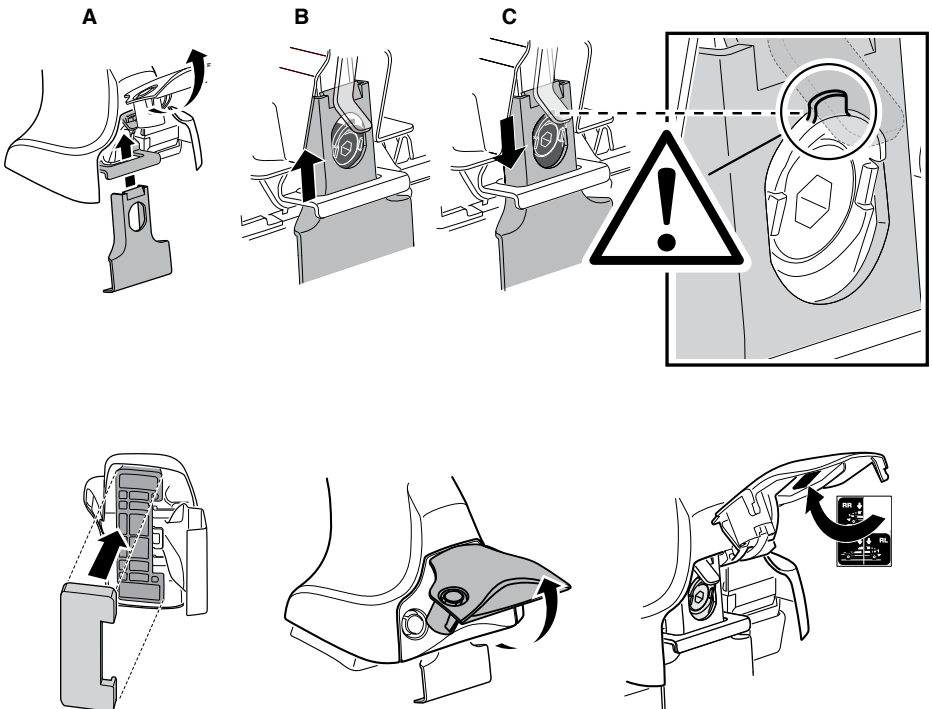
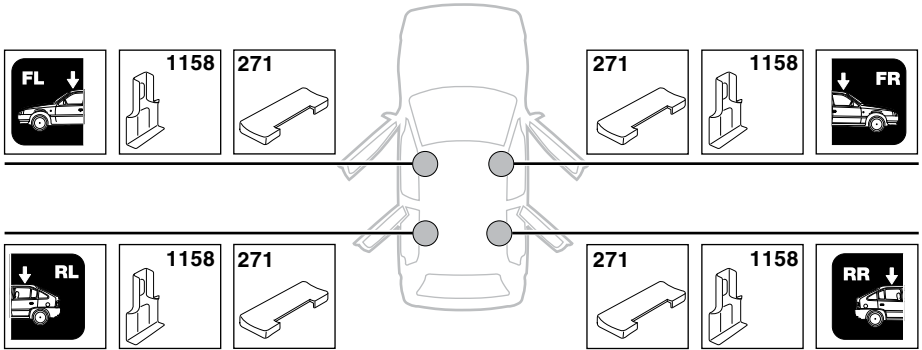
1101 mm

4

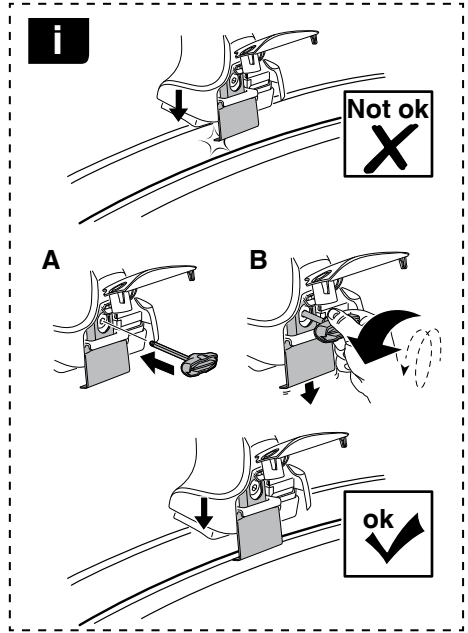


5

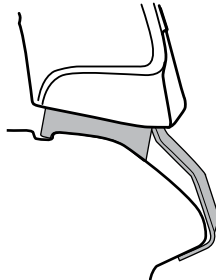
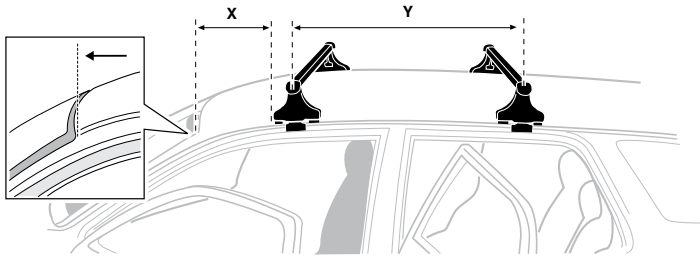
VOLKSWAGEN Touareg, 5-dr SUV, 10- (Without railing)



6



	X mm	Y mm	X inch	Y inch
VOLKSWAGEN Touareg, 5-dr SUV, 10- (Without railing)	400 mm	700 mm	15 ³ / ₄ "	27 ¹ / ₂ "



7



GB/US Tighten alternately
 D Die Schrauben abwechselnd anziehen
 F Serrer alternativement chaque côté
 NL Afwisselend aan de linker- en de rechterkant aandraaien
 I Alternare il serraggio delle viti
 E Apertar alternativamente
 PT Aperte alternadamente
 S Dra åt växelvis
 FIN Kierrä vuorotellen
 EST Pinguldage vaheldumisi
 LAT Pieļieciet pamišus
 LIT Užsukinėkite pakaitomis
 PL Śruby dokręcaj naprzemiennie
 RU Затягивайте попеременно

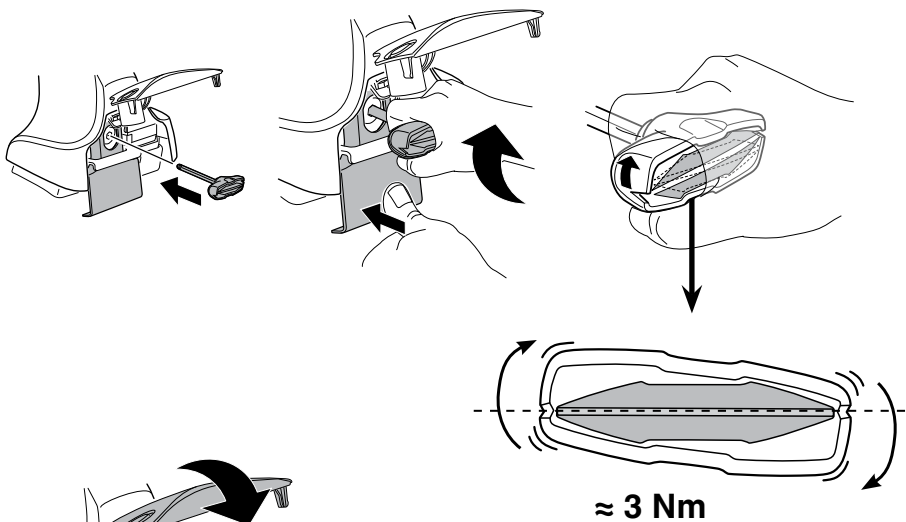
CZ Pokręťta bagażnika dokręcaj dokręcaj naprzemiennie.
 SK Dofahajte striedavo
 SLO Privijajte izmenično.
 HR Naizmjerno zategnite
 HU Egymástól függetlenül szorítandó
 GR Σφιγίγτες εναλλάξ
 TR Dönüşümlü sıkın

中文 交替拧紧

한국어 번갈아 가며 조이십시오.

日本語 交互に締め付けてください。

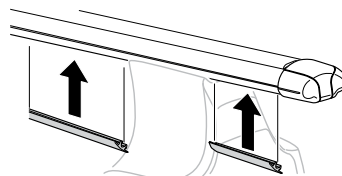
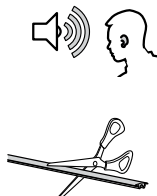
ไทย ชันในแบบสลับ



8



x1
17 mm





THULE
SWEDEN
**ONE
KEY
SYSTEM**



		(x4)
		(x6)
		(x8)
NA		(x10)
EUR		(x12)
ASIA		



WW ▶ Thule Sweden AB, Box 69, 330 33 Hillerstorp, SWEDEN
NA ▶ Thule Inc., 42 Silvermine Road, Seymour, Connecticut 06483, USA

info@thule.com
customer.service@thule.com

www.thule.com