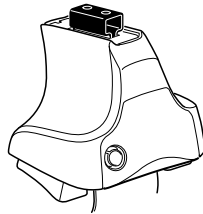


# Kit 1629

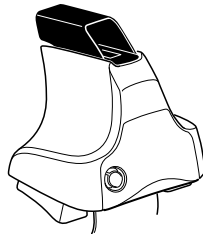
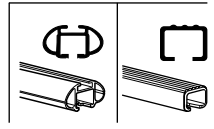
KIA K5, 4-dr Sedan, 10–

KIA Optima, 4-dr Sedan, 10– / \*11–

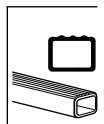
\*North America



**754** Rapid System  
**480R** Rapid Traverse (North America)



**480** Traverse (North America)



**754 Rapid System**  
**480R Rapid Traverse (North America)**

---

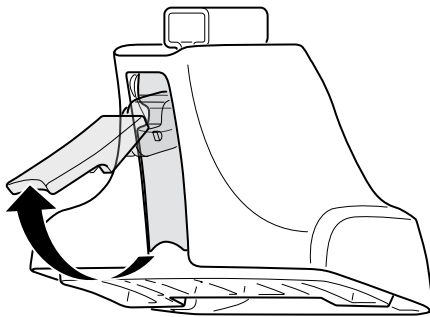
**754 Rapid System**  
**480R Rapid Traverse (North America)**  
**480 Traverse (North America)**

23 mm Bolt	x2	17 mm Bolt	x1	23 mm Bolt	x2	23 mm Bolt	x2
23 mm Nut	x2	23 mm Nut	x2	23 mm Nut	x2	23 mm Nut	x2
Washer	x4	Washer	x2	Washer	x2	Washer	x2
Washer	x4	Washer	x4	Washer	x2	Washer	x2

(North America)

Bracket 1178	x2	Bracket 235	x1	Plate	x1
Bracket 1179	x2	Bracket 236	x1	Plate	x1
		Bracket 370	x1	Plate	x1
		Bracket 371	x1	Plate	x1

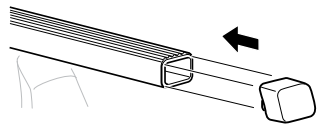
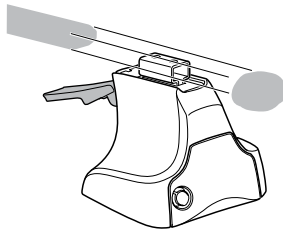
1



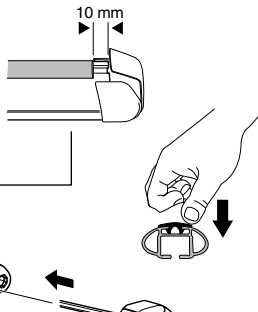
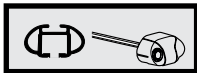
2



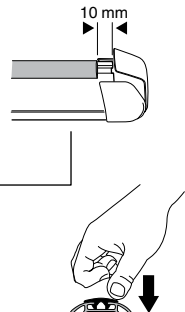
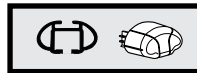
754 Rapid System  
480R Rapid Traverse  
(North America)



x4



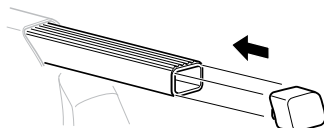
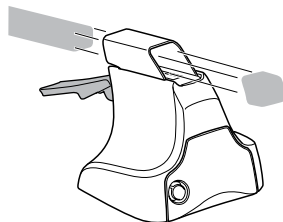
x4



x4

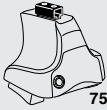


480 Traverse  
(North America)

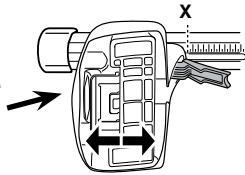


x4

**3**

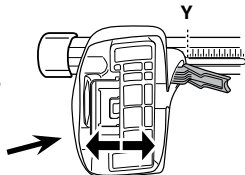


**754** Rapid System



**X**

<b>KIA K5, 4-dr Sedan, 10-</b>	<b>43,5</b>
<b>KIA Optima, 4-dr Sedan, 10- / *11-</b>	<b>43,5</b>



**Y**

<b>KIA K5, 4-dr Sedan, 10-</b>	<b>38,5</b>
<b>KIA Optima, 4-dr Sedan, 10- / *11-</b>	<b>38,5</b>

**3**



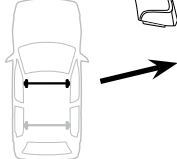
**480R** Rapid Traverse



**480** Traverse

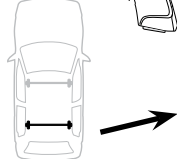


**(North America)**



**X inch      X mm**

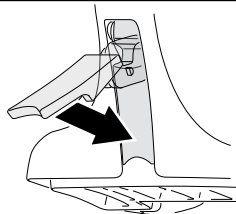
<b>KIA K5, 4-dr Sedan, 10-</b>	<b>42 3/4"</b>	<b>1086 mm</b>
<b>KIA Optima, 4-dr Sedan, 10- / *11-</b>	<b>42 3/4"</b>	<b>1086 mm</b>



**Y inch      Y mm**

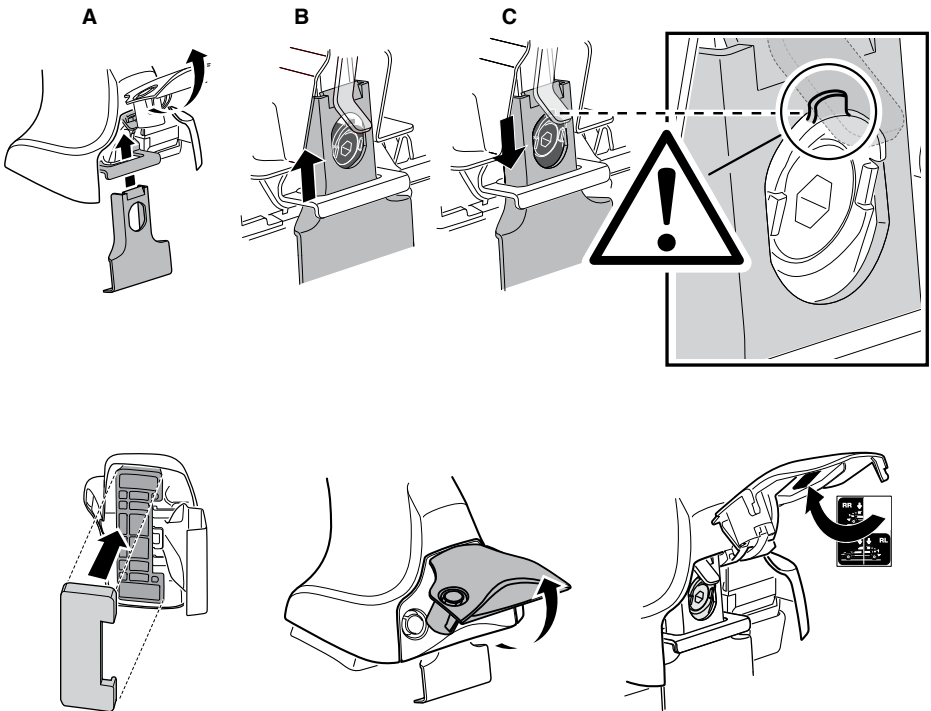
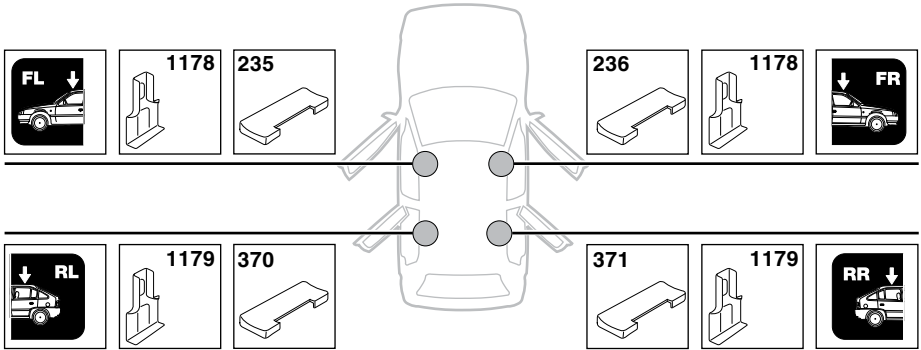
<b>KIA K5, 4-dr Sedan, 10-</b>	<b>40 3/4"</b>	<b>1036 mm</b>
<b>KIA Optima, 4-dr Sedan, 10- / *11-</b>	<b>40 3/4"</b>	<b>1036 mm</b>

**4**

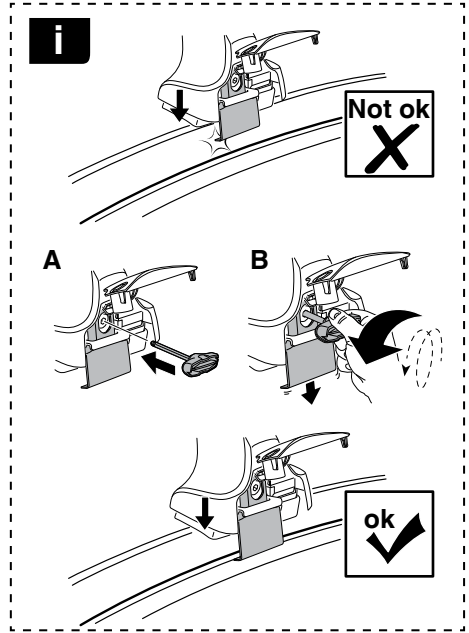
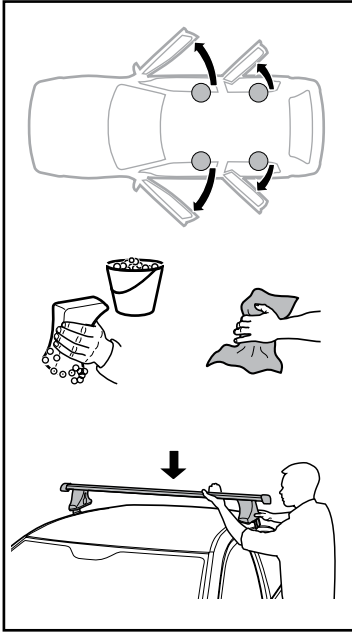


# 5

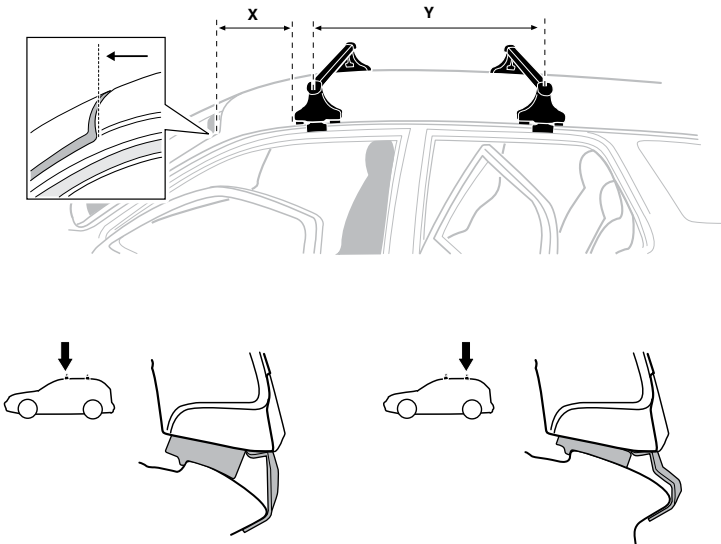
KIA K5, 4-dr Sedan, 10–  
KIA Optima, 4-dr Sedan, 10– / \*11–



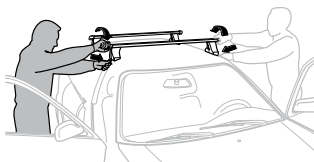
6



	X mm	Y mm	X inch	Y inch
<b>KIA K5, 4-dr Sedan, 10-</b>	230 mm	665 mm	9"	26 1/8"
<b>KIA Optima, 4-dr Sedan, 10- / *11-</b>	230 mm	665 mm	9"	26 1/8"



7



GB/US Tighten alternately  
 D Die Schrauben abwechselnd anziehen  
 F Serrer alternativement chaque côté  
 NL Afwisselend aan de linker- en de rechterkant aandraaien  
 I Alternare il serraggio delle viti  
 E Apertar alternativamente  
 PT Aperte alternadamente  
 S Dra åt växelvis  
 FIN Kierrä vuorotellen  
 EST Pinguldage vaheldumisi  
 LAT Pieļieciet pamišus  
 LIT Užsukinėkite pakaitomis  
 PL Śruby dokręcaj naprzemiennie  
 RU Затягивайте попеременно

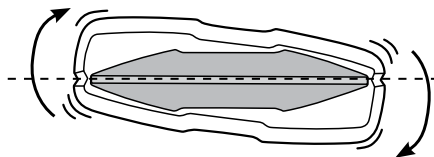
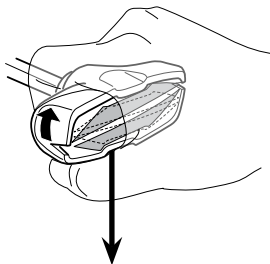
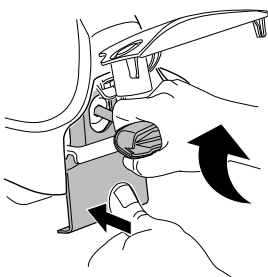
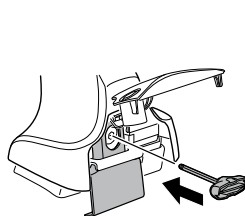
CZ Pokręťta bagażnika dokręcaj naprzemiennie.  
 SK Dofahajte striedavo  
 SLO Privijajte izmenično.  
 HR Naizmjerno zategnite  
 HU Egymástól függetlenül szorítandó  
 GR Σφιγίγες ενολάξ  
 TR Dönüşümlü sıkın

中文 交替拧紧

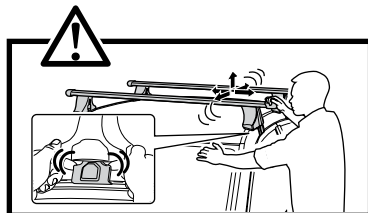
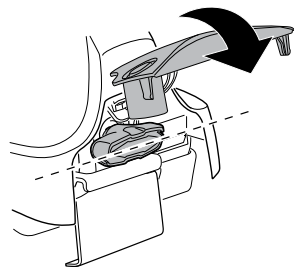
한국어 번갈아 가며 조이십시오.

日本語 交互に締め付けてください。

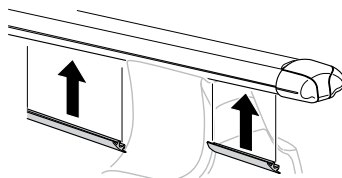
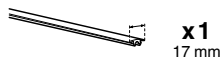
ไทย ชันในแบบสลับ

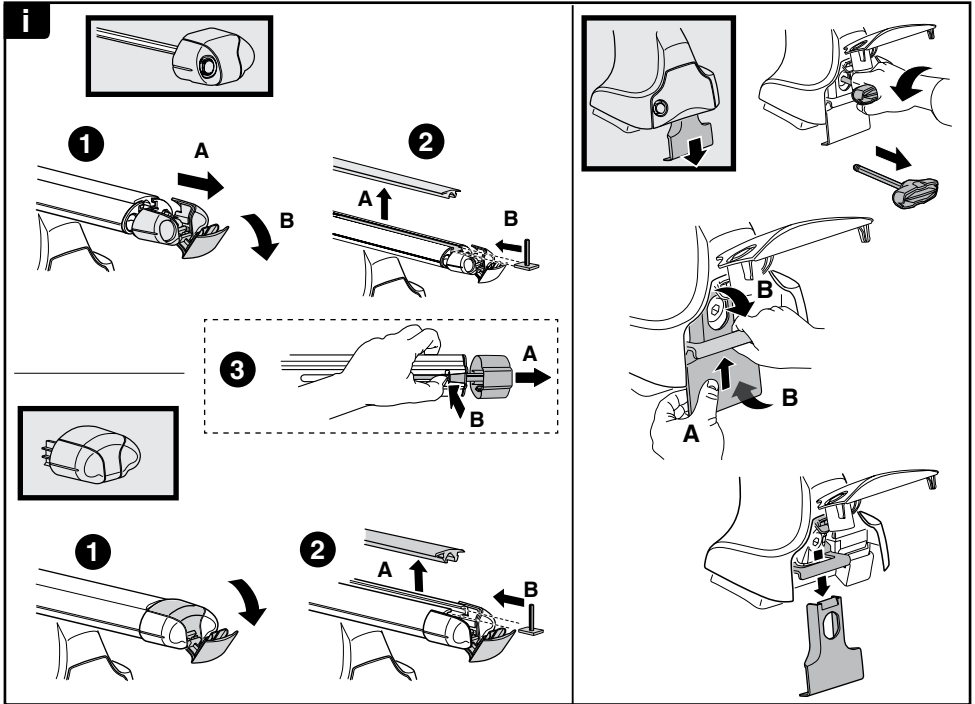
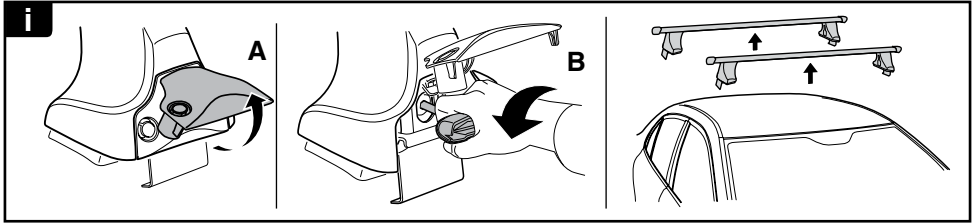


≈ 3 Nm

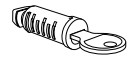
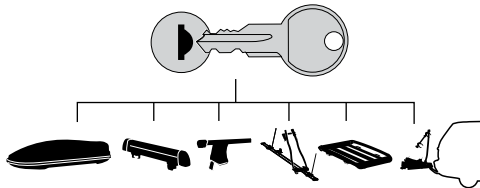


8





**THULE**  
SWEDEN  
**ONE  
KEY  
SYSTEM**



**544** (x4)

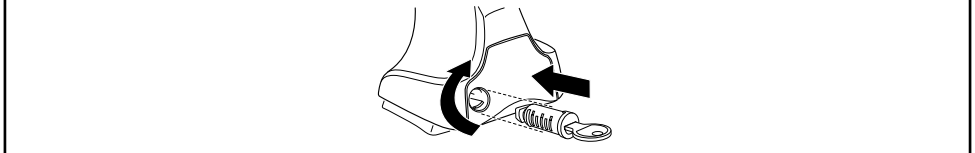
**596** (x6)

**588** (x8)

NA **510** (x10)

EUR **452** (x12)

ASIA



WW ▶ Thule Sweden AB, Box 69, 330 33 Hillerstorp, SWEDEN

NA ▶ Thule Inc., 42 Silvermine Road, Seymour, Connecticut 06483, USA

info@thule.com

customer.service@thule.com



www.thule.com

503-1629-01