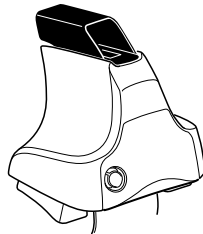
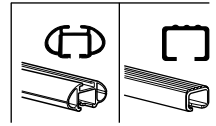


Kit 1617

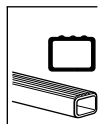
FORD C-Max (Mk II), 5-dr MPV, 10-



754 Rapid System
480R Rapid Traverse (North America)



480 Traverse (North America)



xx kg
 xx lbs + 7 kg
 15,4 lbs = **Max. 75 kg**
Max. 154 lbs

80 km/h 130 km/h
 50 Mph 80 Mph
 40 km/h 25 Mph
km/h Mph

THULE **Kit XXXX**

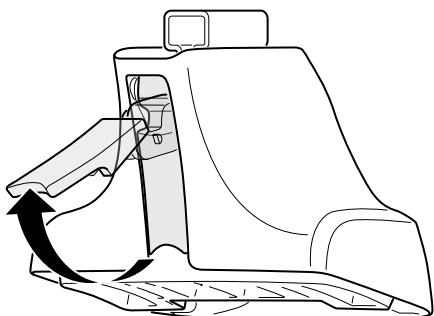
x1
x4
754 Rapid System
x4
480R Rapid Traverse (North America)
x4 **x4**

754 Rapid System
480R Rapid Traverse (North America)
x1
x4 **x4**
480 Traverse (North America)

x2 **x2** **x1** **(North America)**
x2 **x2** **x2** **x2**
x2 **x2** **x2**
x4 **x2** **x2**
x4 **x4** **x2**

1129 x1 **99 x1**
1130 x1 **100 x1**
1131 x2 **313 x1**
314 x1 **x1**

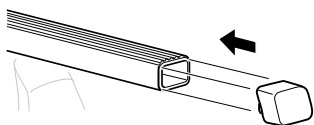
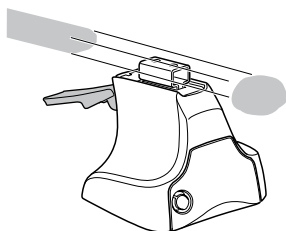
1



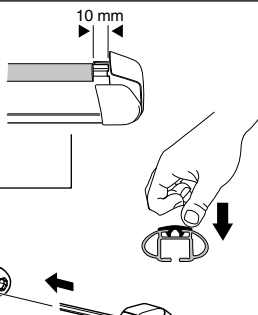
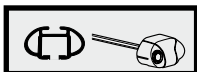
2



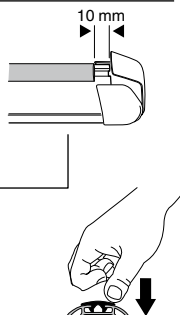
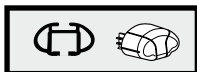
754 Rapid System
480R Rapid Traverse
(North America)



x4



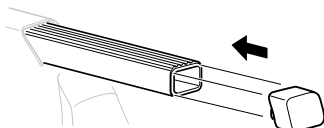
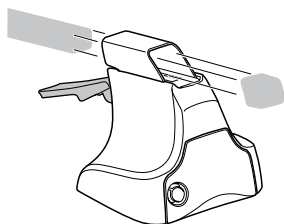
x4



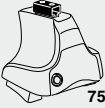
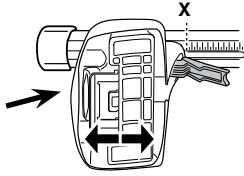
x4



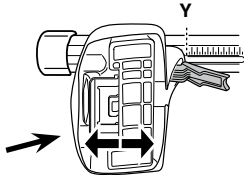
480 Traverse
(North America)



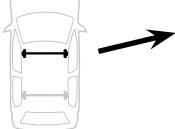
x4

3**754** Rapid System

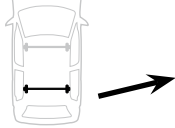
	X
FORD C-Max (Mk II), 5-dr MPV, 10-	46



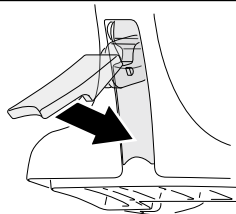
	Y
FORD C-Max (Mk II), 5-dr MPV, 10-	41

3**480R** Rapid Traverse**480** Traverse**(North America)**

	X inch	X mm
FORD C-Max (Mk II), 5-dr MPV, 10-	43 3/4"	1111 mm

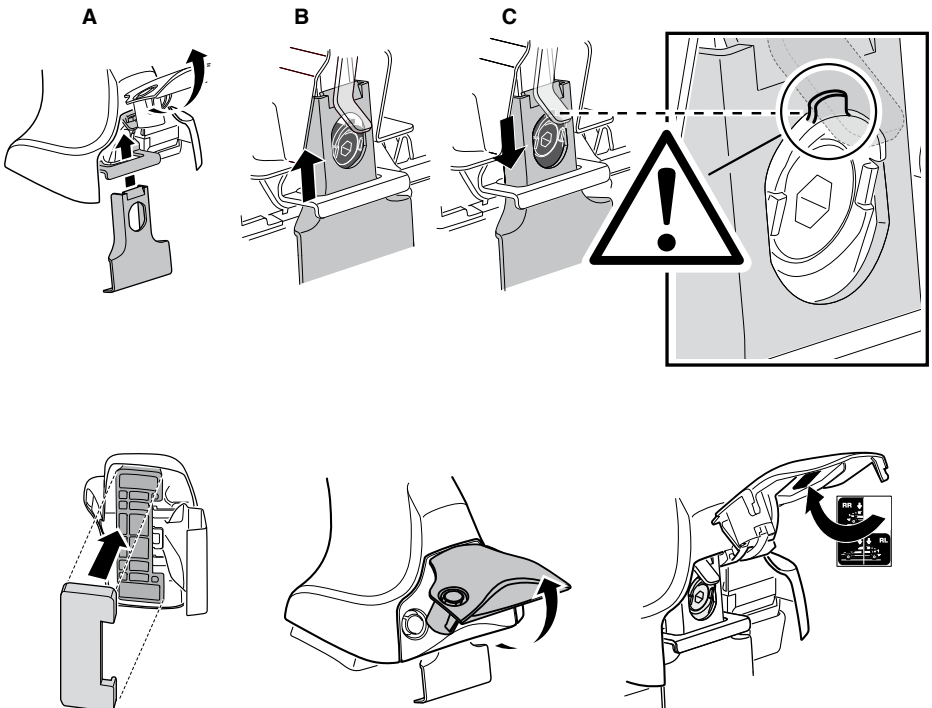
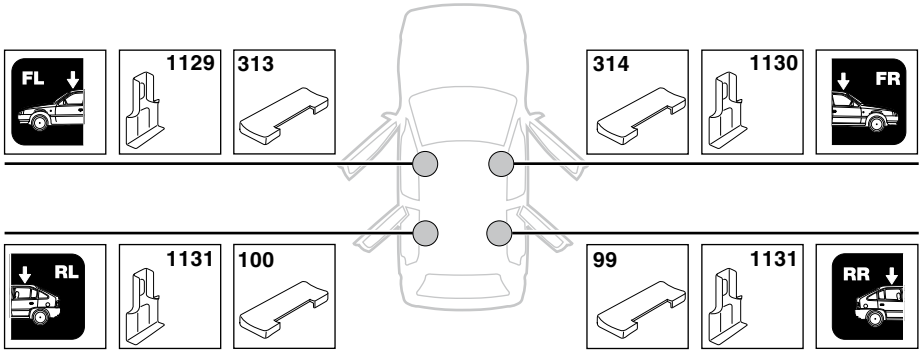


	Y inch	Y mm
FORD C-Max (Mk II), 5-dr MPV, 10-	41 3/4"	1061 mm

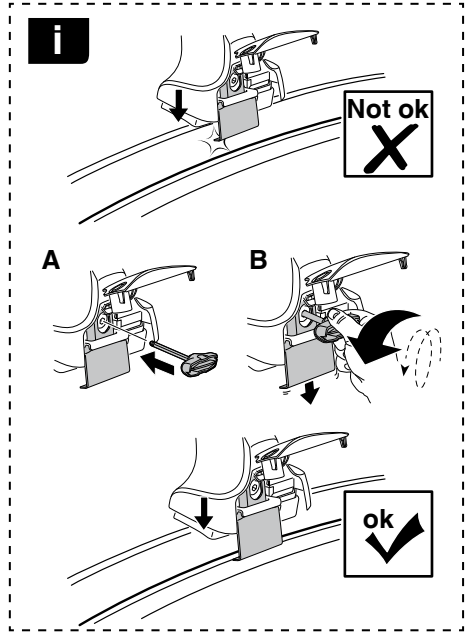
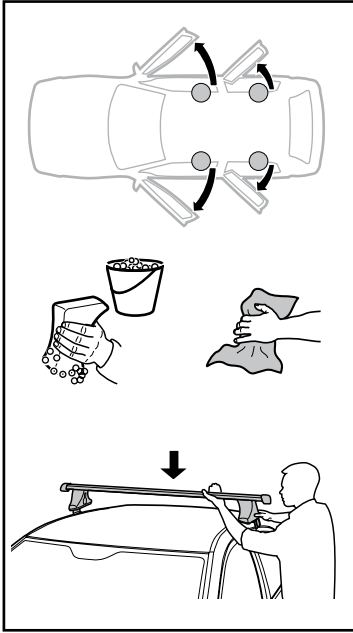
4

5

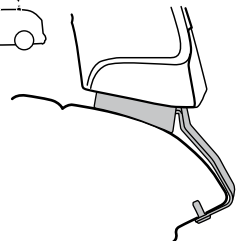
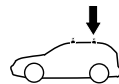
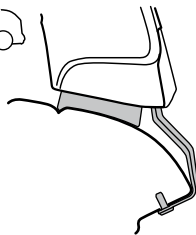
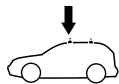
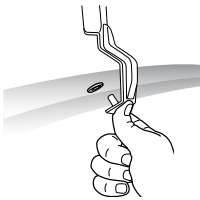
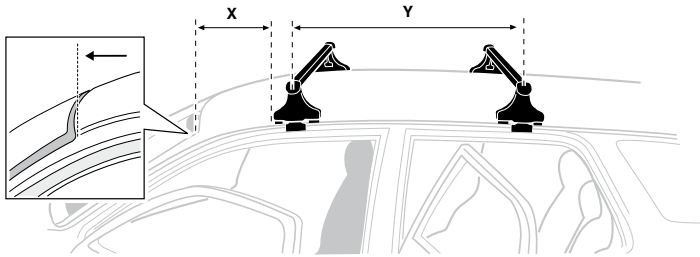
FORD C-Max (Mk II), 5-dr MPV, 10-



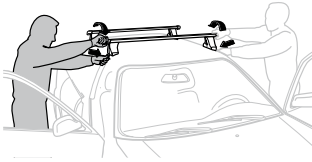
6



	X mm	Y mm	X inch	Y inch
FORD C-Max (Mk II), 5-dr MPV, 10-	290 mm	785 mm	11 ³ / ₈ "	30 ⁷ / ₈ "



7



GB/US	Tighten alternately
D	Die Schrauben abwechselnd anziehen
F	Serrer alternativement chaque côté
NL	Afwisselend aan de linker- en de rechterkant aandraaien
I	Alternare il serraggio delle viti
E	Apertar alternativamente
PT	Aperte alternadamente
S	Dra åt växelvis
FIN	Kierrä vuorotellen
EST	Pinguldage vaheldumisi
LAT	Pielveiciet pamišus
LIT	Užsukinėkite pakaitomis
PL	Śruby dokręcaj naprzemiennie
RU	Загряивайте попеременно

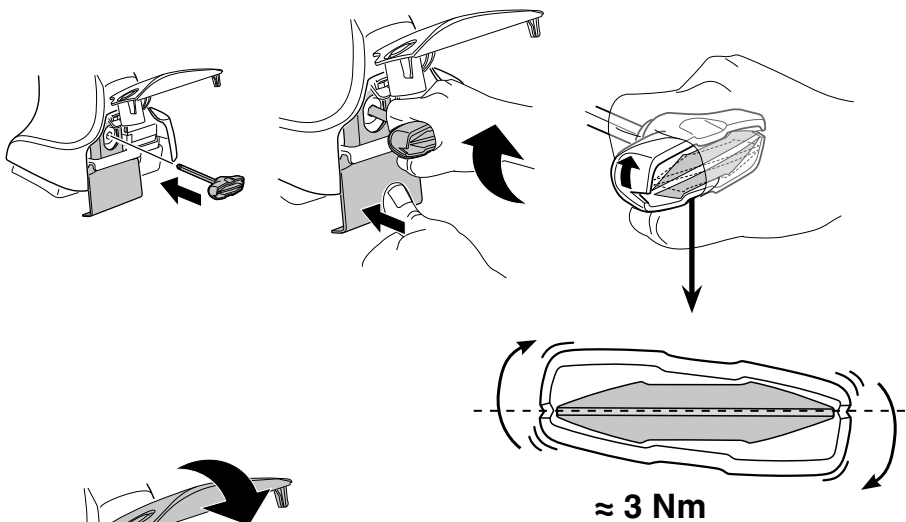
CZ	Pokręřta багаžnika dokręřcaj dokręřcaj naprzemiennie.
SK	Dofahajte striedavo
SLO	Privijajte izmenično.
HR	Naizmjenočno zategnite
HU	Egymástól függetlenül szorítandó
GR	Σφιγίγτες εναλλάξ
TR	Dönüşümlü sıkın

中文 交替拧紧

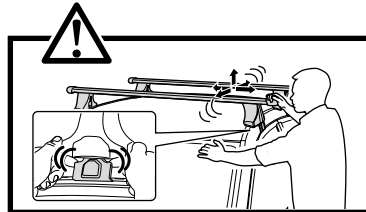
한국어 번갈아 가며 조이십시오.

日本語 交互に締め付けてください。

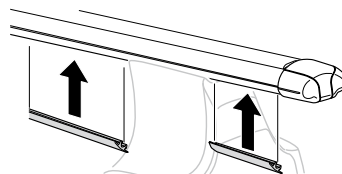
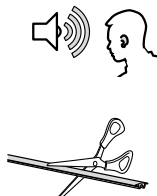
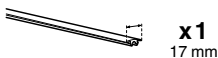
ไทย ชันในแบบสลับ

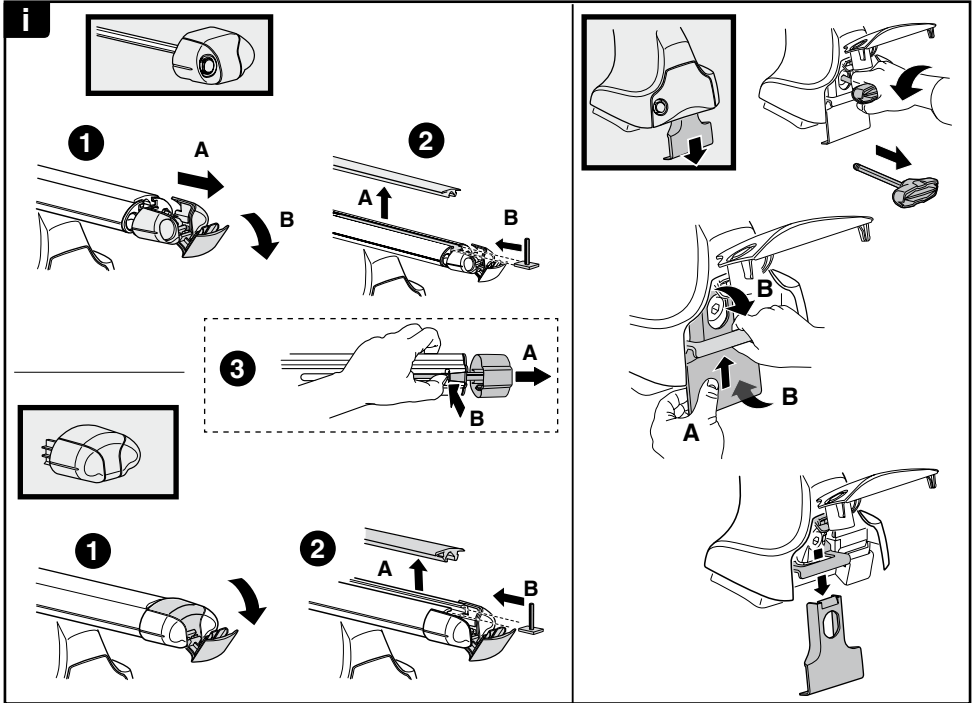
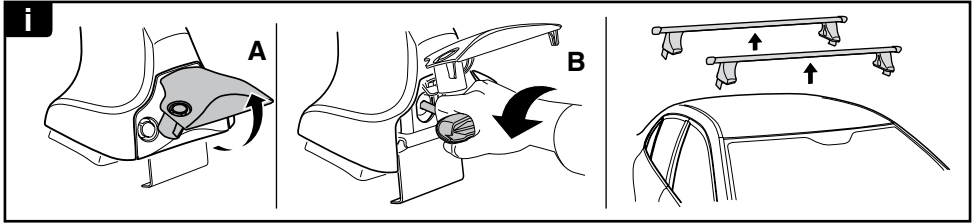


≈ 3 Nm



8





THULE
SWEDEN

**ONE
KEY
SYSTEM**

544 (x4)

596 (x6)

588 (x8)

NA **510** (x10)

EUR **452** (x12)

ASIA