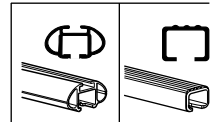
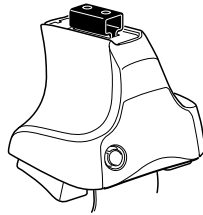


# Kit 1600

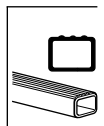
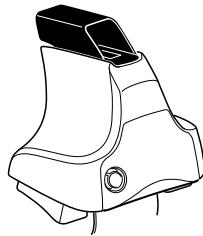
VOLVO V70, 5-dr Estate, 07-\*

\*Without railing

480R  
754

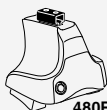


480



**Kit**

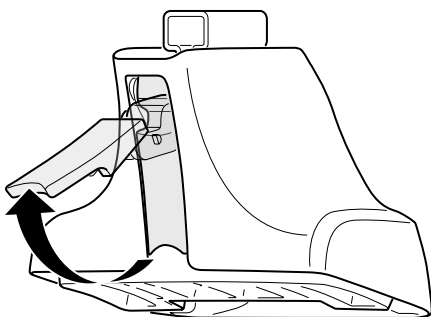
1



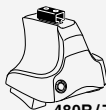
480R/754



480



2

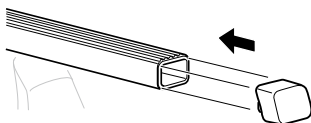
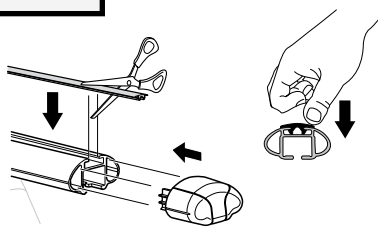
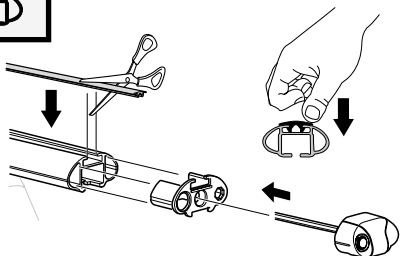
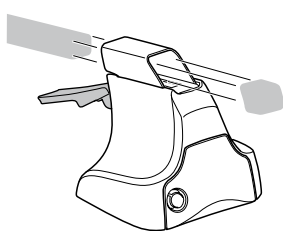
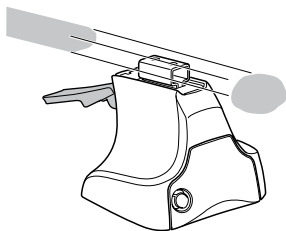


480R/754

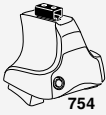


480

+

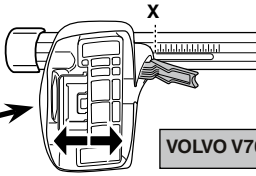
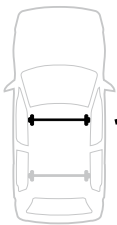


**3**

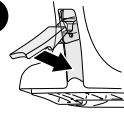


754

**1**



**2**

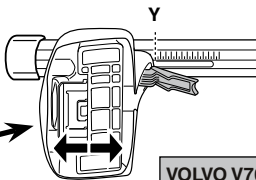


**VOLVO V70, 5-dr Estate, 07-**

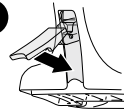
**X**

**44,5**

**1**



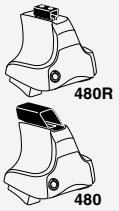
**2**



**VOLVO V70, 5-dr Estate, 07-**

**Y**

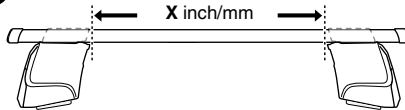
**38,5**



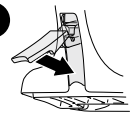
480R

480

**1**



**2**



**VOLVO V70, 5-dr Estate, 07-**

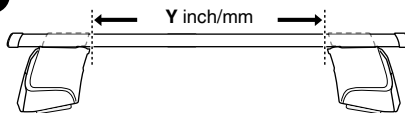
**X inch**

**X mm**

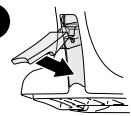
**43 1/8"**

**1096 mm**

**1**



**2**



**VOLVO V70, 5-dr Estate, 07-**

**Y inch**

**Y mm**

**40 3/4"**

**1036 mm**

4



480R/754



480

VOLVO V70, 5-dr Estate, 07-

204



1088



206



1089



15



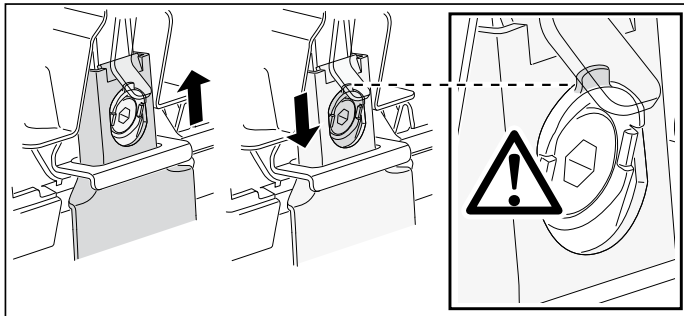
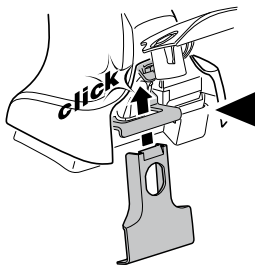
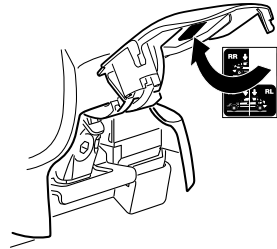
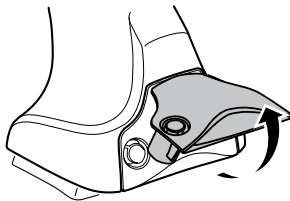
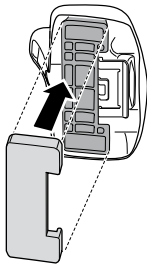
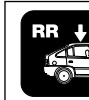
903



15



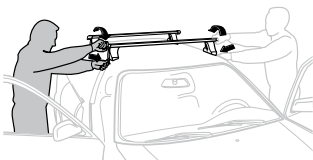
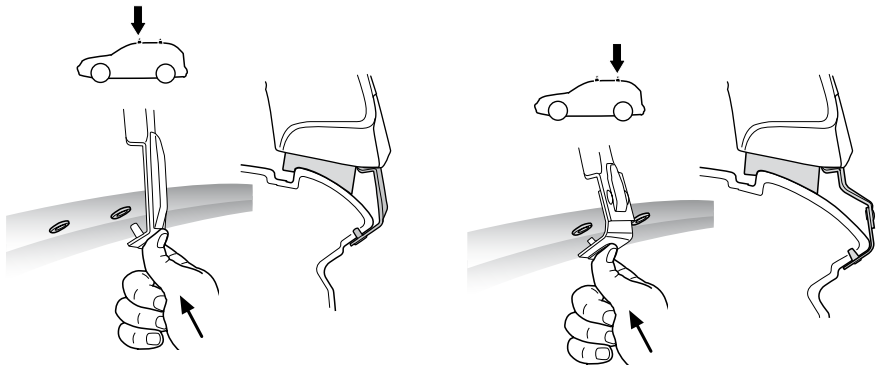
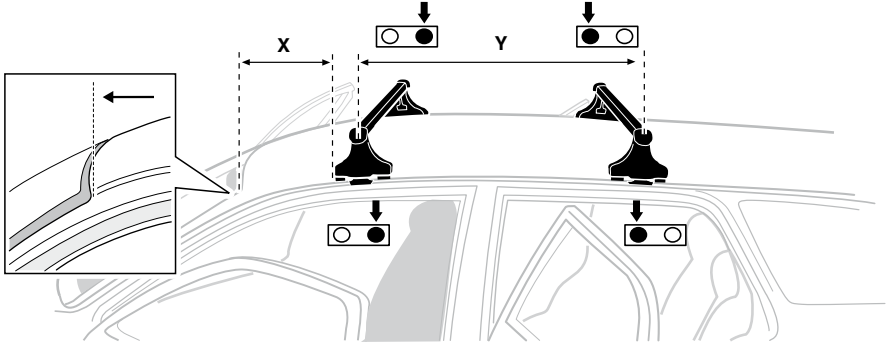
903



5

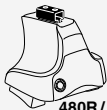


	X mm	Y mm	X inch	Y inch
<b>VOLVO V70, 5-dr Estate, 07-</b>	<b>230 mm</b>	<b>700 mm</b>	<b>9"</b>	<b>27 1/2"</b>



- |              |   |            |   |
|--------------|---|------------|---|
| <b>GB/US</b> | Tighten alternately                                     | <b>CZ</b>  | Pokreťta bagažníka dokrečaj dokrečaj naprzemiennie. |
| <b>D</b>     | Die Schrauben abwechselnd anziehen                      | <b>SK</b>  | Dofahujte striedavo                                 |
| <b>F</b>     | Serrer alternativement chaque côté                      | <b>SLO</b> | Privijajte izmenično.                               |
| <b>NL</b>    | Afwisselend aan de linker- en de rechterkant aandraaien | <b>HR</b>  | Naizmjenično zategniti                              |
| <b>I</b>     | Alternare il serraggio delle viti                       | <b>HU</b>  | Egymástól függetlenül szorítandó                    |
| <b>E</b>     | Apretar alternativamente                                | <b>GR</b>  | Σφιγγείτε εναλλάξ                                   |
| <b>PT</b>    | Aperte alternadamente                                   | <b>TR</b>  | Dönüşümlü sıkın                                     |
| <b>S</b>     | Dra åt växelvis   | <b>中文</b>  | 交替拧紧  |
| <b>FIN</b>   | Kierrä vuorotellen                                      | <b>한국어</b> | 변갈아 가며 조이십시오.                                       |
| <b>EST</b>   | Pinguldage vaheldumisi                                  | <b>日本語</b> | 交互に締め付けてください。                                       |
| <b>LAT</b>   | Pielieciet pamāšus                                      | <b>ไทย</b> | ขันในแบบสลับ  |
| <b>LIT</b>   | Užsukinkite pakaitomis                                  |            |   |
| <b>PL</b>    | Śruby dokrečaj naprzemiennie                            |            |   |
| <b>RU</b>    | Затягивайте попеременно                                 |            |   |

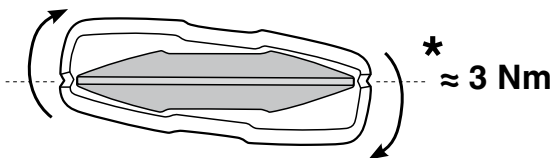
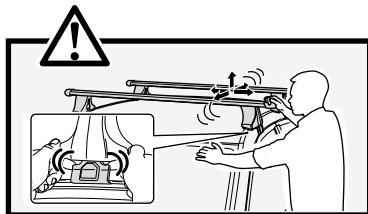
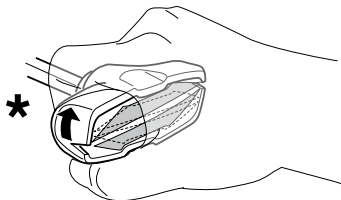
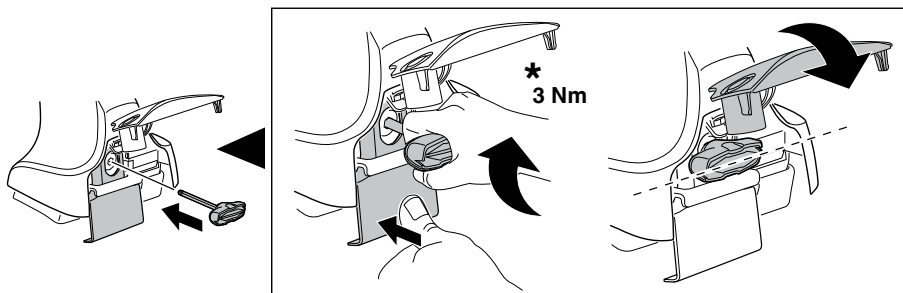
6



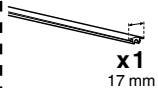
480R/754



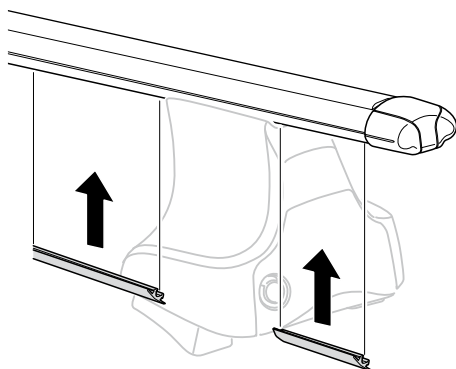
480

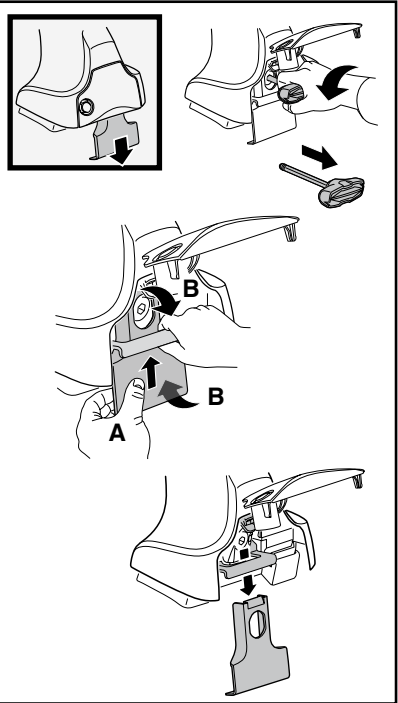
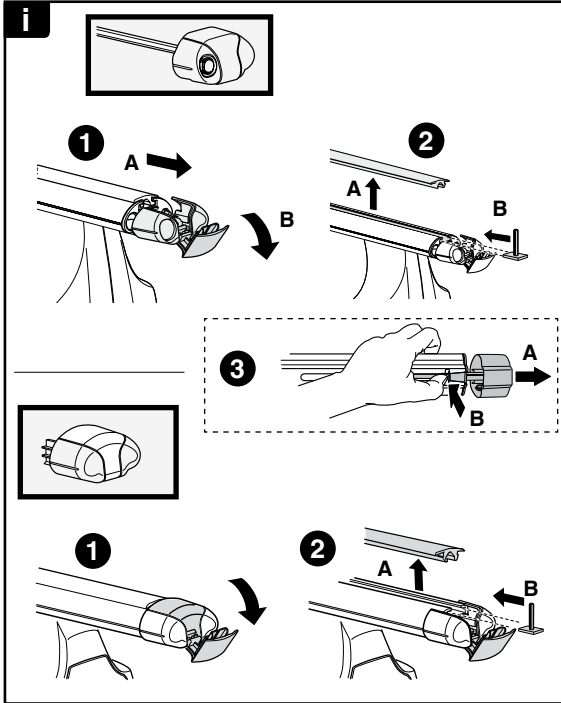
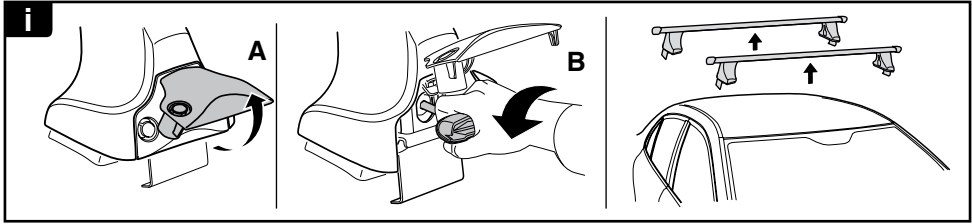


7

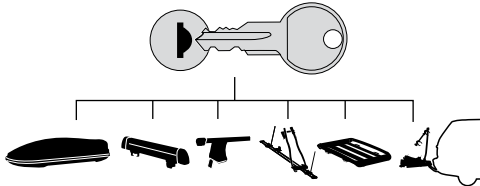


x1  
17 mm

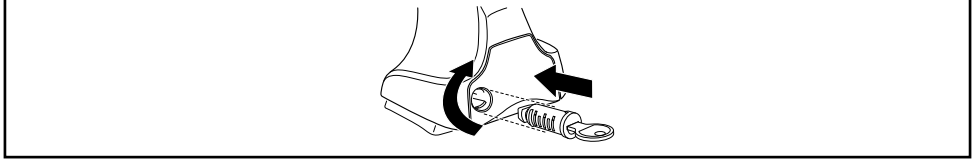




**THULE**  
SWEDEN  
**ONE  
KEY  
SYSTEM**



		(x4)
		(x6)
		(x8)
NA		(x10)
EUR		(x12)
ASIA		



WW ▶ Thule Sweden AB, Box 69, 330 33 Hillerstorp, SWEDEN  
NA ▶ Thule Inc., 42 Silvermine Road, Seymour, Connecticut 06483, USA

info@thule.com  
customer.service@thule.com

www.thule.com