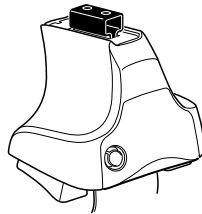


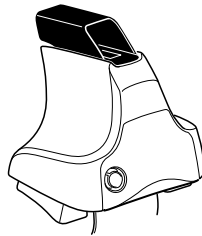
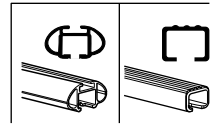
Kit 1597

VOLKSWAGEN Jetta, 4-dr Sedan (MK5), 05-10
VOLKSWAGEN GLI, 4-dr Sedan (MK5), *08-10

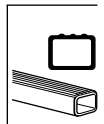
*North America



754 Rapid System
480R Rapid Traverse (North America)



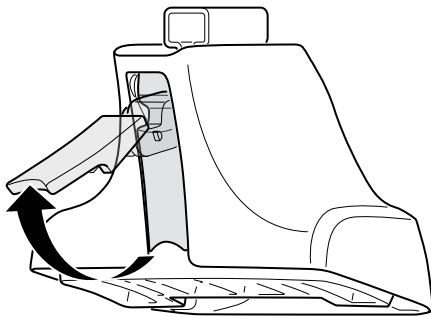
480 Traverse (North America)



754 Rapid System
480R Rapid Traverse (North America)

480 Traverse (North America)

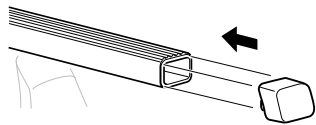
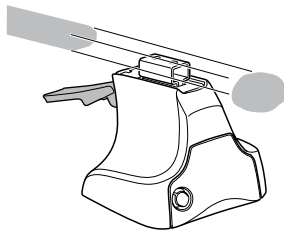
1



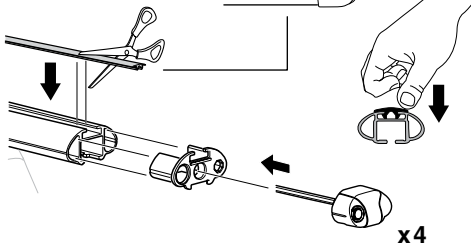
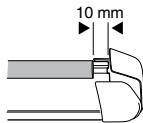
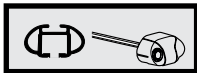
2



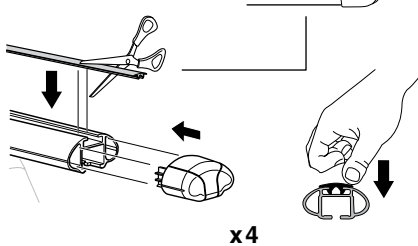
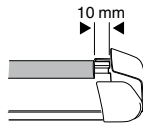
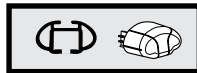
754 Rapid System
480R Rapid Traverse
(North America)



x4



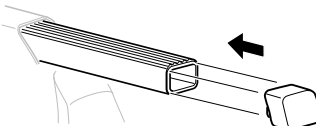
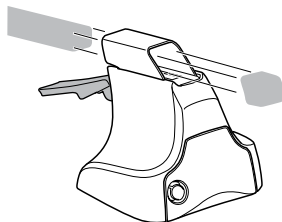
x4



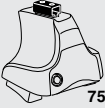
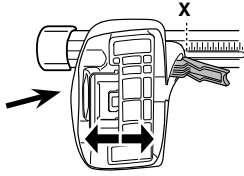
x4



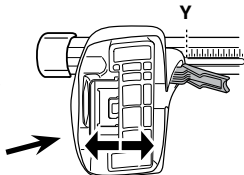
480 Traverse
(North America)



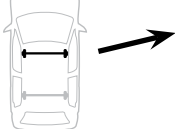
x4

3**754** Rapid System

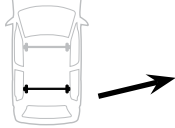
	X
VOLKSWAGEN Jetta , 4-dr Sedan (MK5), 05-10	38,5
VOLKSWAGEN GLI , 4-dr Sedan (MK5), *08-10	38,5



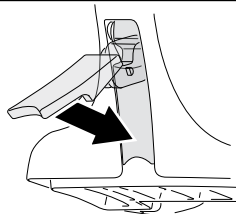
	Y
VOLKSWAGEN Jetta , 4-dr Sedan (MK5), 05-10	35
VOLKSWAGEN GLI , 4-dr Sedan (MK5), *08-10	35

3**480R** Rapid Traverse**480** Traverse**(North America)**

	X inch	X mm
VOLKSWAGEN Jetta , 4-dr Sedan (MK5), 05-10	40 ³/₄"	1036 mm
VOLKSWAGEN GLI , 4-dr Sedan (MK5), *08-10	40 ³/₄"	1036 mm

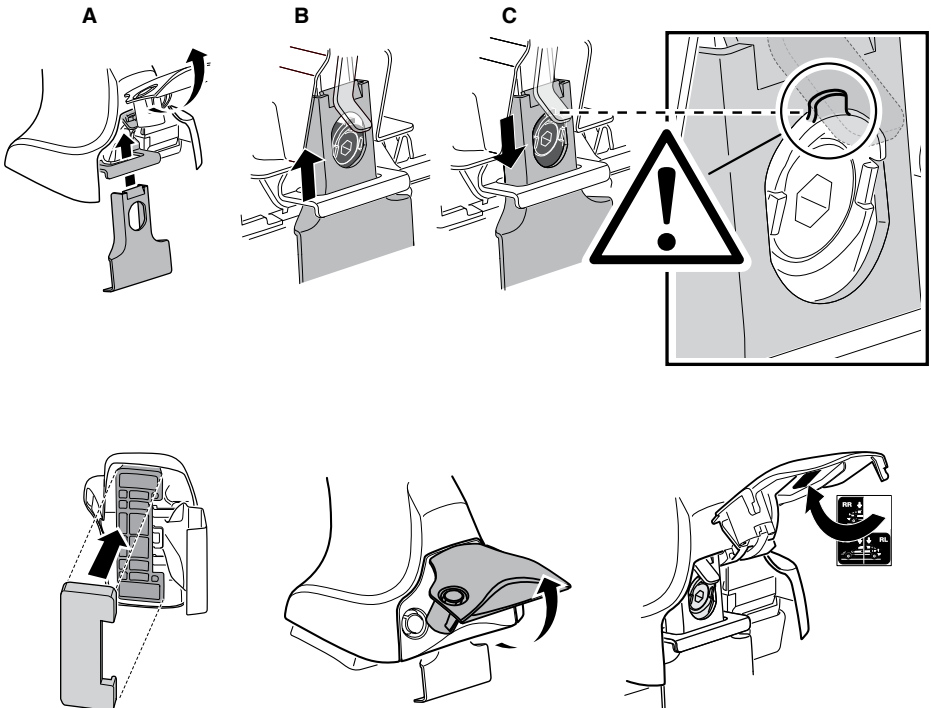
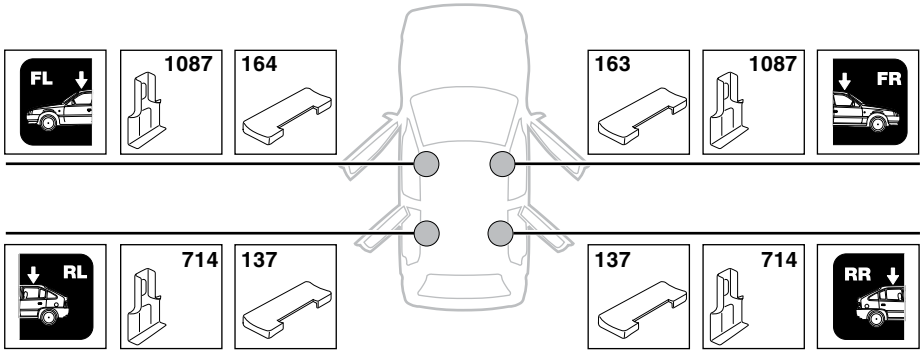


	Y inch	Y mm
VOLKSWAGEN Jetta , 4-dr Sedan (MK5), 05-10	39 ³/₈"	1001 mm
VOLKSWAGEN GLI , 4-dr Sedan (MK5), *08-10	39 ³/₈"	1001 mm

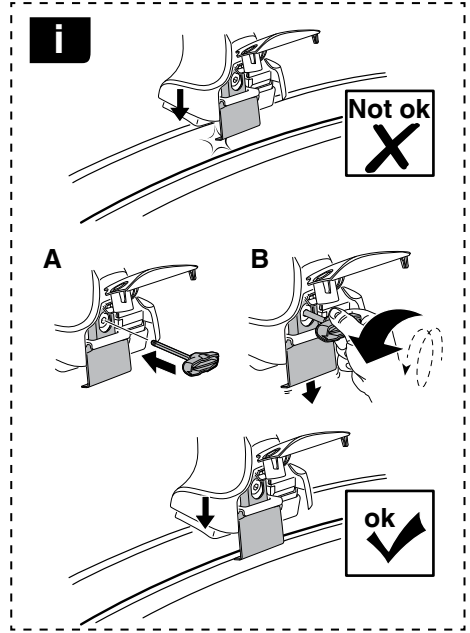
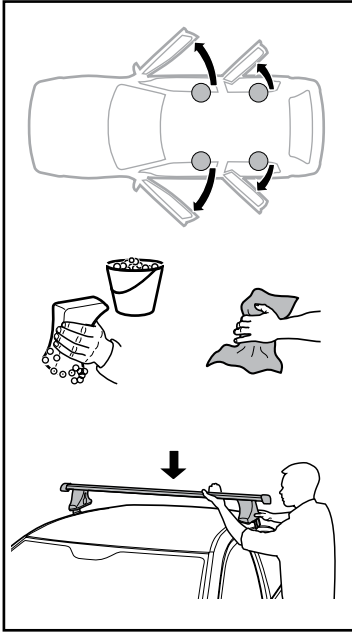
4

5

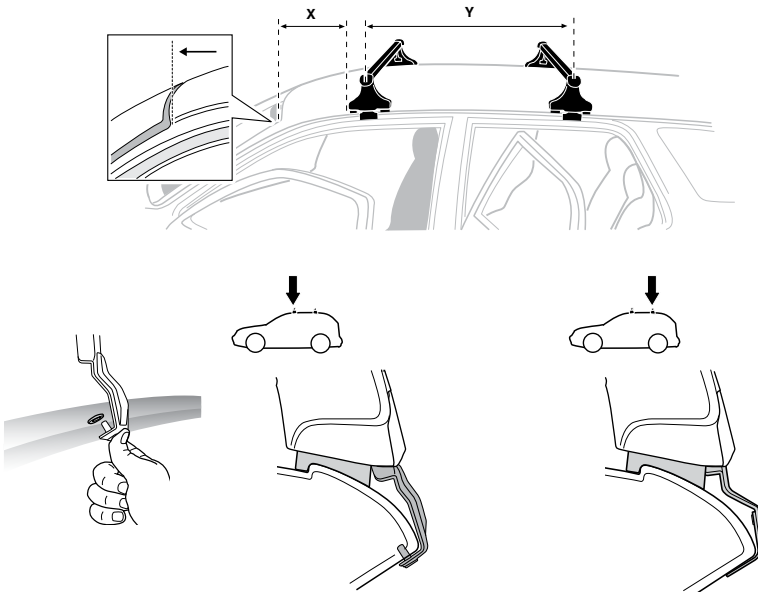
VOLKSWAGEN Jetta, 4-dr Sedan (MK5), 05-10
VOLKSWAGEN GLI, 4-dr Sedan (MK5), *08-10



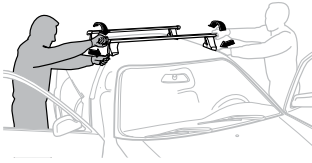
6



	X mm	Y mm	X inch	
VOLKSWAGEN Jetta, 4-dr Sedan (MK5), 05-10	320 mm	725 mm	12 5/8"	28 1/4"
VOLKSWAGEN GLI, 4-dr Sedan (MK5), *08-10	320 mm	725 mm	12 5/8"	28 1/4"



7



GB/US	Tighten alternately
D	Die Schrauben abwechselnd anziehen
F	Serrer alternativement chaque côté
NL	Afwisselend aan de linker- en de rechterkant aandraaien
I	Alternare il serraggio delle viti
E	Apertar alternativamente
PT	Aperte alternadamente
S	Dra åt växelvis
FIN	Kierrä vuorotellen
EST	Pinguldage vaheldumisi
LAT	Pielveiciet pamišus
LIT	Užsukinėkite pakaitomis
PL	Śruby dokręcaj naprzemiennie
RU	Загряивайте попеременно

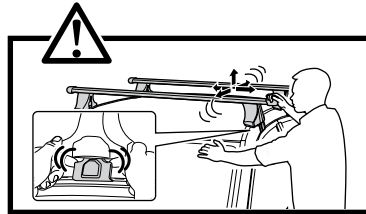
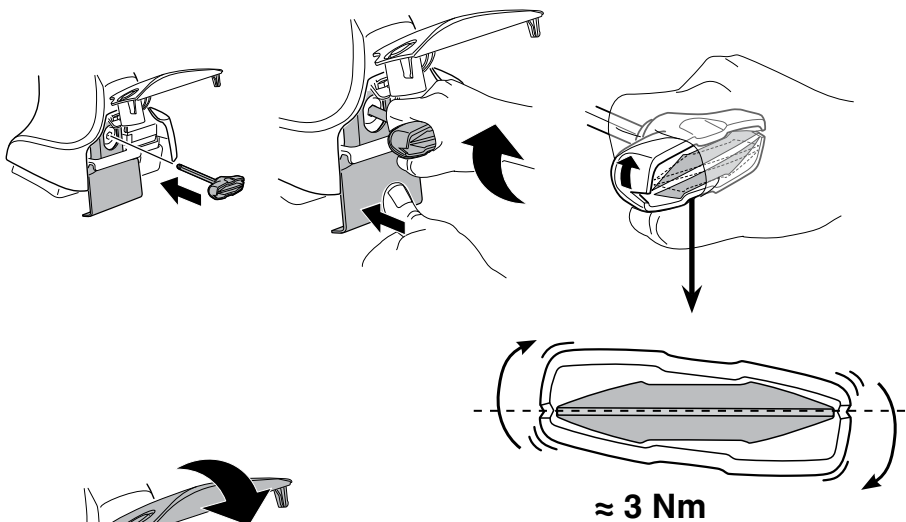
CZ	Pokręřta багаžnika dokręcaj naprzemiennie.
SK	Dofahajte striedavo
SLO	Privijajte izmenično.
HR	Naizmjenično zategnite
HU	Egymástól függetlenül szorítandó
GR	Σφιγίγτες εναλλάξ
TR	Dönüşümlü sıkın

中文 交替拧紧

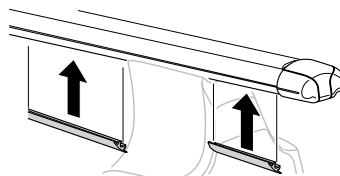
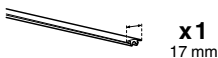
한국어 번갈아 가며 조이십시오.

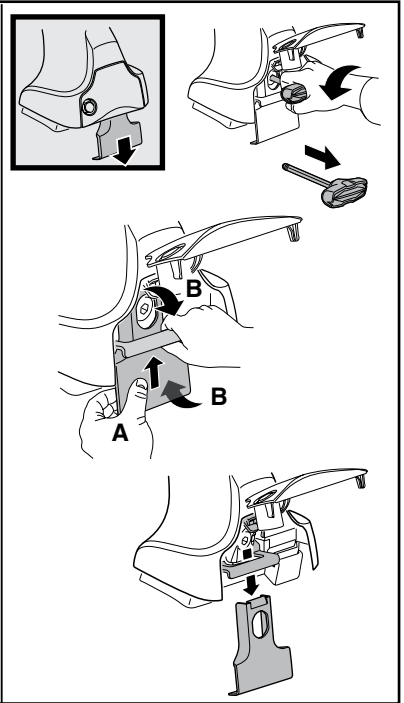
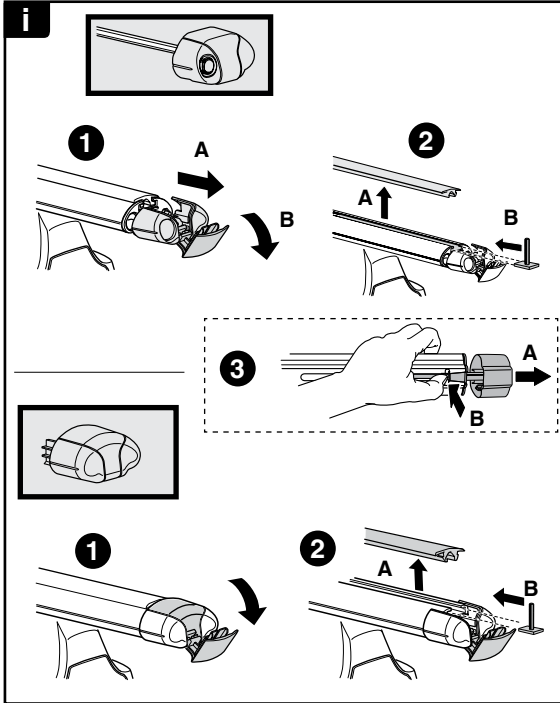
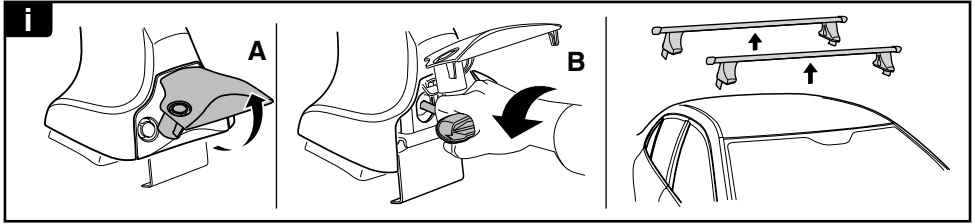
日本語 交互に締め付けてください。

ไทย ชันในแบบสลับ

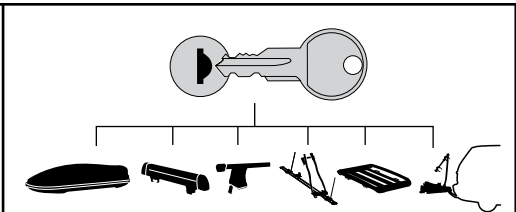


8

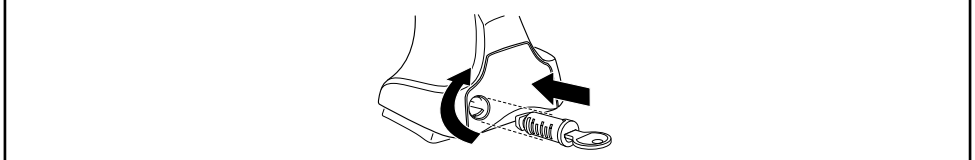




THULE
SWEDEN
**ONE
KEY
SYSTEM**



- 544** (x4)
 - 596** (x6)
 - 588** (x8)
 - 510** (x10)
 - 452** (x12)
- NA
EUR
ASIA



WW ▶ Thule Sweden AB, Box 69, 330 33 Hillerstorp, SWEDEN
NA ▶ Thule Inc., 42 Silvermine Road, Seymour, Connecticut 06483, USA

info@thule.com
customer.service@thule.com

www.thule.com