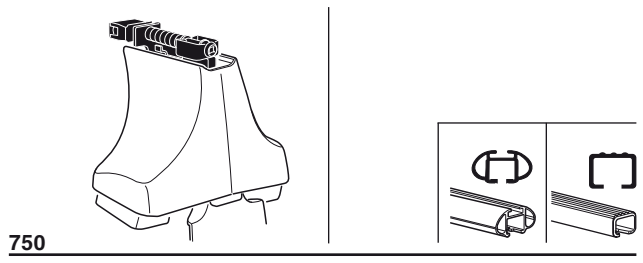
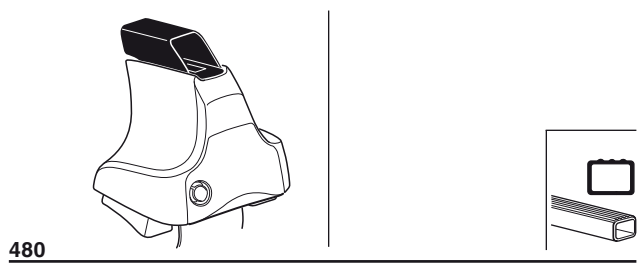
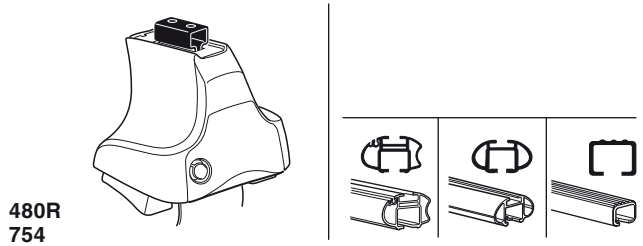


# Kit 1555

TOYOTA Tundra, 4-dr Double Cab, 07-  
TOYOTA Tundra, 4-dr Crewmax Cab, 07-



**480R/754**

**480**

**750**

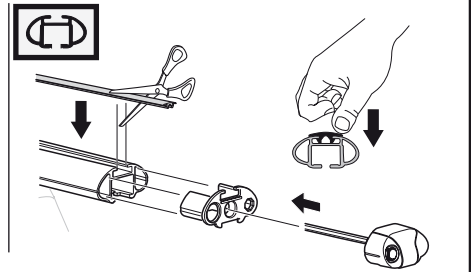
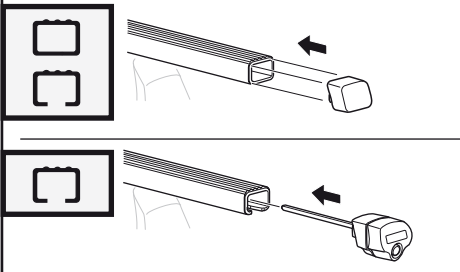
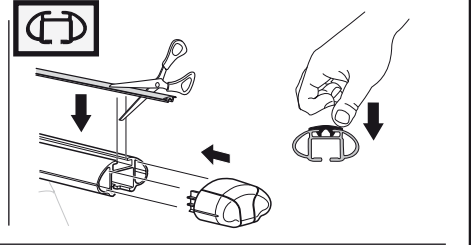
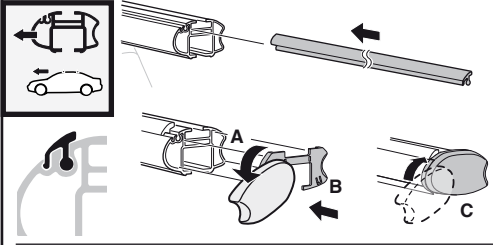
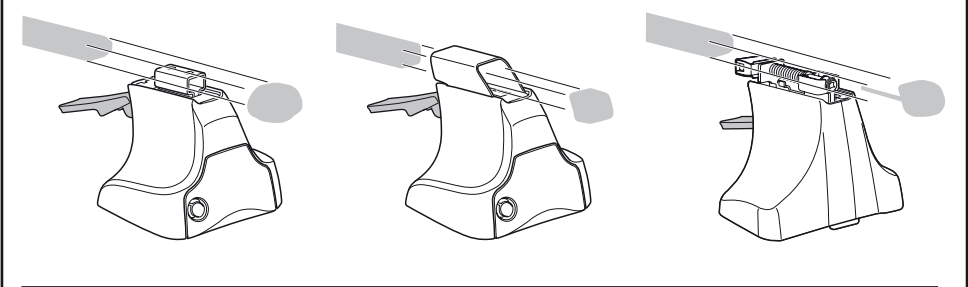
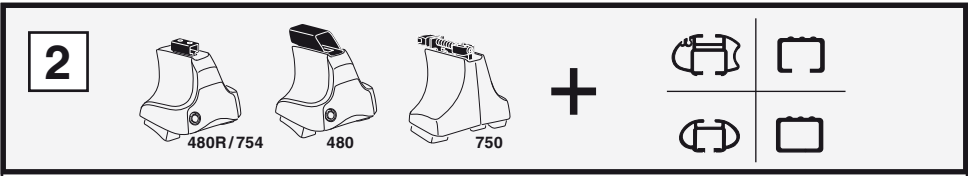
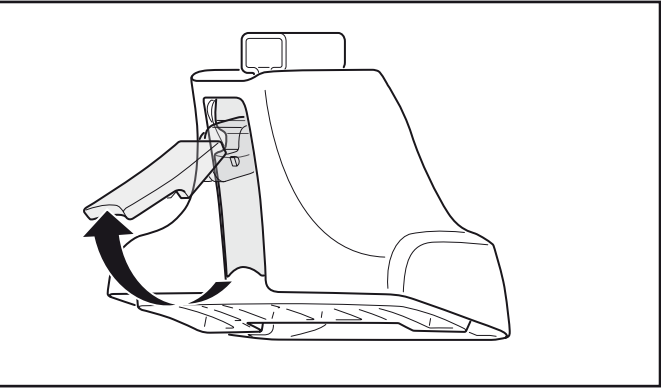
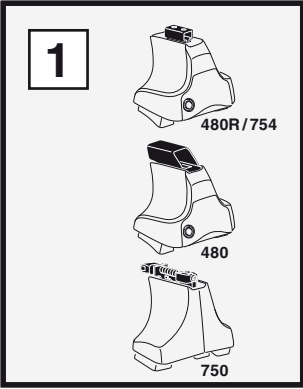
x2 x2 x2 x4	x2	x2 x2 x4 x4	x2 x2	x2

**153** x 4

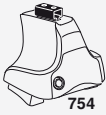
**93** x 4

x 1

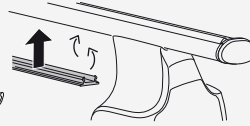
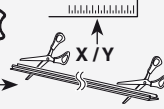
**Kit**



3



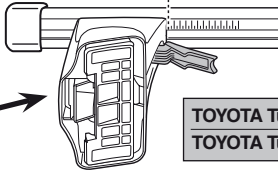
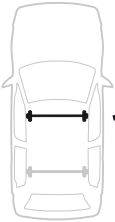
754



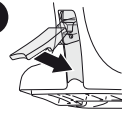
750



1

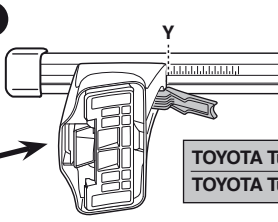


2

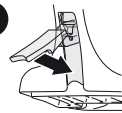


	X
TOYOTA Tundra, 4-dr Double Cab, 07-	61
TOYOTA Tundra, 4-dr Crewmax Cab, 07-	61

1



2



	Y
TOYOTA Tundra, 4-dr Double Cab, 07-	57,5
TOYOTA Tundra, 4-dr Crewmax Cab, 07-	57,5

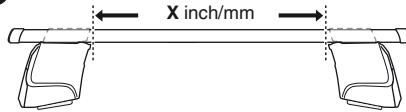


480R



480

1

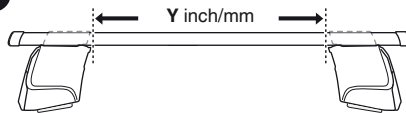


2



	X inch	X mm
TOYOTA Tundra, 4-dr Double Cab, 07-	49 <sup>5</sup> / <sub>8</sub> "	1261 mm
TOYOTA Tundra, 4-dr Crewmax Cab, 07-	49 <sup>5</sup> / <sub>8</sub> "	1261 mm

1



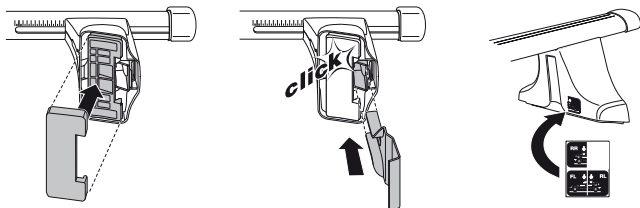
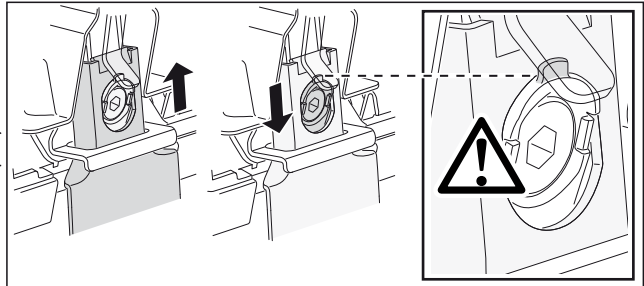
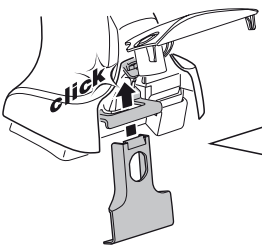
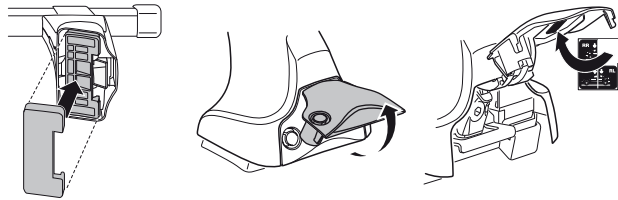
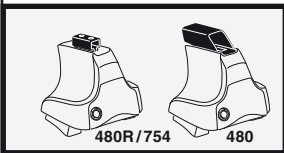
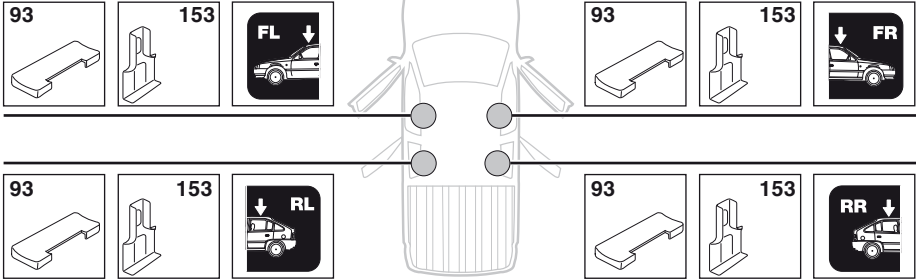
2



	Y inch	Y mm
TOYOTA Tundra, 4-dr Double Cab, 07-	48 <sup>1</sup> / <sub>4</sub> "	1226 mm
TOYOTA Tundra, 4-dr Crewmax Cab, 07-	48 <sup>1</sup> / <sub>4</sub> "	1226 mm

# 4

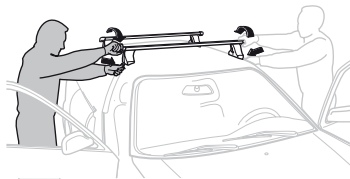
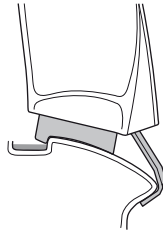
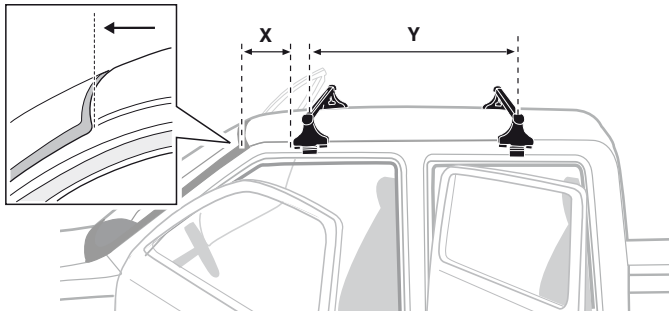
TOYOTA Tundra, 4-dr Double Cab, 07–  
TOYOTA Tundra, 4-dr Crewmax Cab, 07–



5



	X mm	Y mm	X inch	Y inch
TOYOTA Tundra, 4-dr Double Cab, 07-	380 mm	700 mm	15"	27 1/2"
TOYOTA Tundra, 4-dr Crewmax Cab, 07-	380 mm	700 mm	15"	27 1/2"



**GB/US** Tighten alternately

**D** Die Schrauben abwechselnd anziehen

**F** Serrer alternativement chaque côté

**NL** Afwisselend aan de linker- en de rechterkant aandraaien

**I** Alternare il serraggio delle viti

**E** Serrare alternativamente

**PT** Aperte alternadamente

**S** Dra åt växelvis

**FIN** Kierrä vuorotellen

**EST** Pinguldage vaheldumisi

**LAT** Pielvelciet pamīšus

**LIT** Užsukinėkite pakaitomis

**PL** Śruby dokręcaj naprzemiennie

**RU** Затягивайте попеременно

**CZ** Pokręťta bagażníka dokręcaj dokręcaj naprzemiennie.

**SK** Doťahujte striedavo

**SLO** Privijajte izmenično.

**HR** Naizmjenično zategnite

**HU** Egymástól függetlenül szorítandó

**GR** Σφίγγετε εναλλάξ

**TR** Dönüşümlü sıkın

**中文** 交替拧紧

**한국어** 번갈아 가며 조이십시오.

**日本語** 交互に締め付けてください。

**ไทย** ชั้้นในแบบสลับ

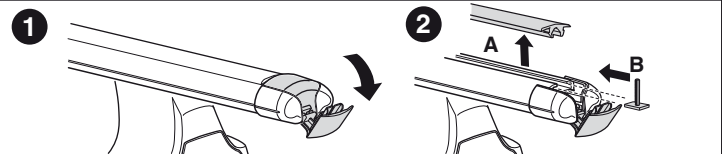
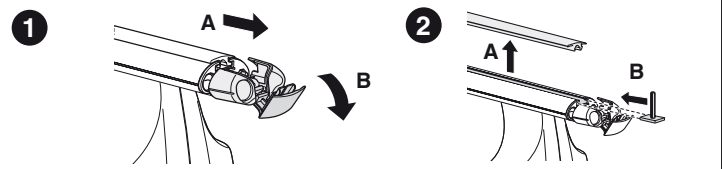
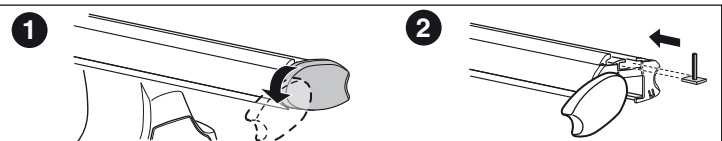
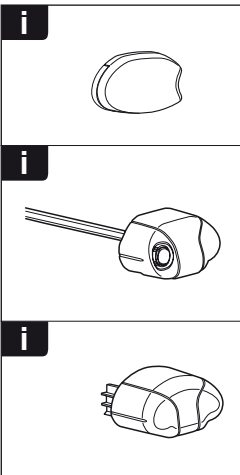
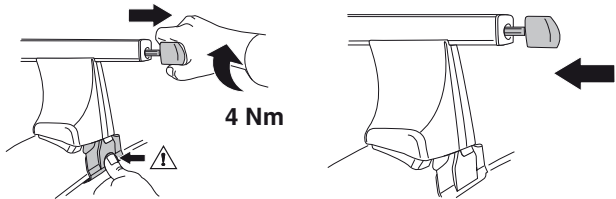
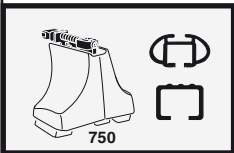
6



480R/754



480





**THULE**  
SWEDEN  
**ONE  
KEY  
SYSTEM**



- 544 (x4)
- 596 (x6)
- 588 (x8)
- NA 510 (x10)
- EUR 452 (x12)
- ASIA



WW ▶ Thule Sweden AB, Box 69, 330 33 Hillerstorp, SWEDEN  
NA ▶ Thule Inc., 42 Silvermine Road, Seymour, Connecticut 06483, USA

info@thule.com  
customer.service@thule.com

www.thule.com