

Kit 1528

DODGE Durango, 5-dr SUV, 03–

DODGE Ram 1500, 2-dr Regular Cab, 02-08

DODGE Ram 1500, 4-dr Quad Cab, 02-08

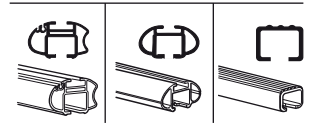
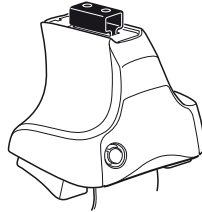
DODGE Ram 1500, 4-dr Mega Cab, 02-08

DODGE Ram 2500/3500, 2-dr Regular Cab, 02-09

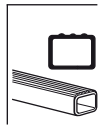
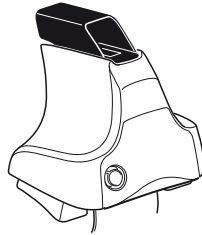
DODGE Ram 2500/3500, 4-dr Quad Cab, 02-09

DODGE Ram 2500/3500, 4-dr Mega Cab, 02-09

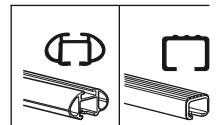
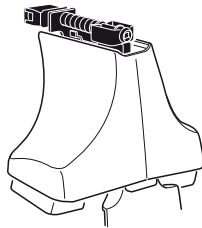
480R
754



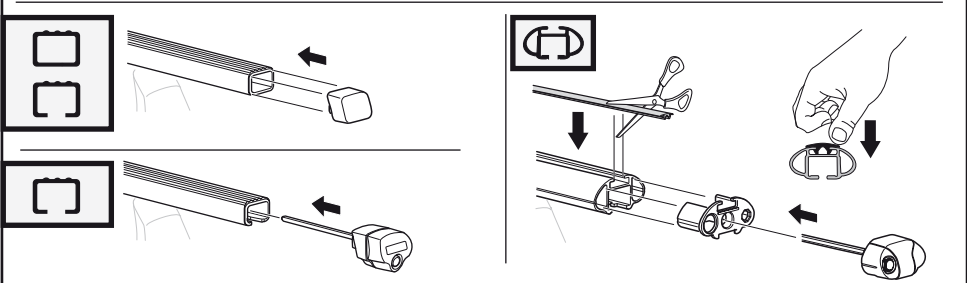
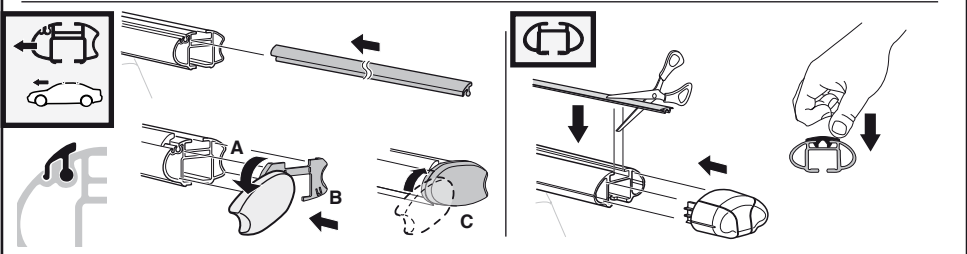
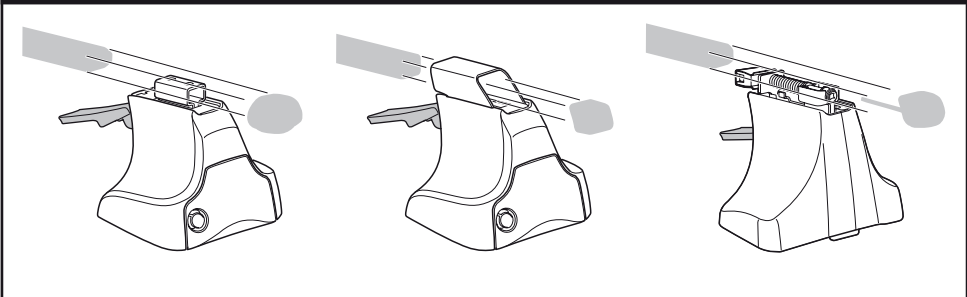
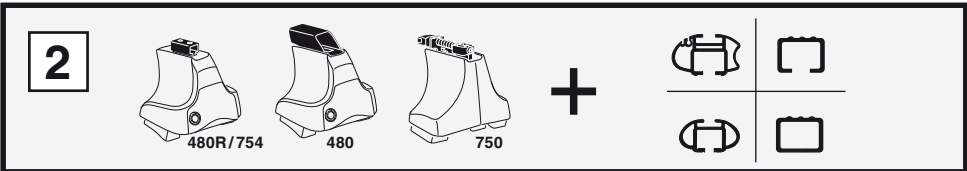
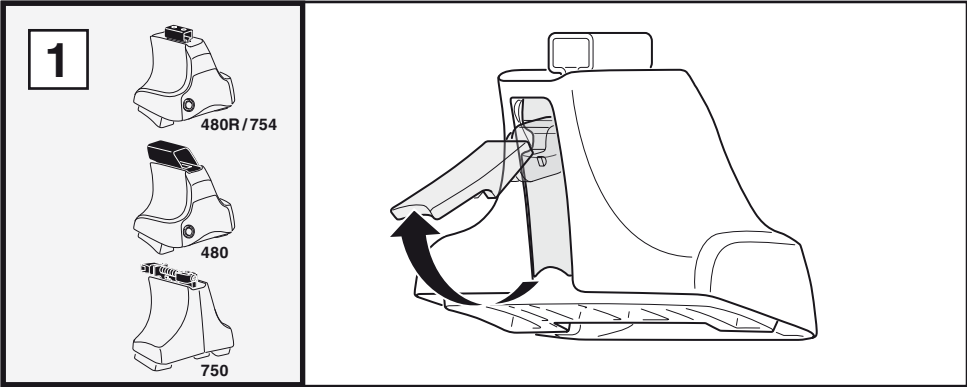
480



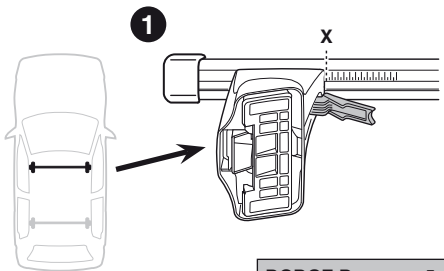
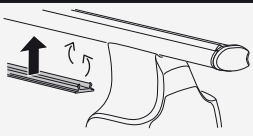
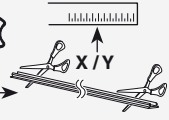
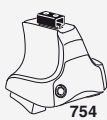
750



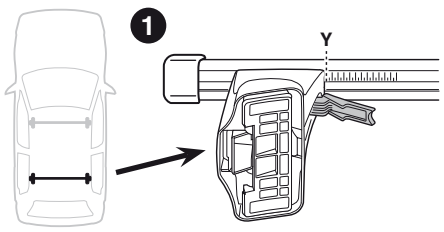
Kit



3



	X
DODGE Durango, 5-dr SUV, 03-	46
DODGE Ram 1500, 2-dr Regular Cab, 02-08	48
DODGE Ram 1500, 4-dr Quad Cab, 02-08	48
DODGE Ram 1500, 4-dr Mega Cab, 02-08	48
DODGE Ram 2500/3500, 2-dr Regular Cab, 02-09	48
DODGE Ram 2500/3500, 4-dr Quad Cab, 02-09	48
DODGE Ram 2500/3500, 4-dr Mega Cab, 02-09	48



	Y
DODGE Durango, 5-dr SUV, 03-	34,5
DODGE Ram 1500, 2-dr Regular Cab, 02-08	48
DODGE Ram 1500, 4-dr Quad Cab, 02-08	46
DODGE Ram 1500, 4-dr Mega Cab, 02-08	46
DODGE Ram 2500/3500, 2-dr Regular Cab, 02-09	48
DODGE Ram 2500/3500, 4-dr Quad Cab, 02-09	46
DODGE Ram 2500/3500, 4-dr Mega Cab, 02-09	46

3

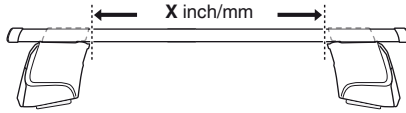


480R

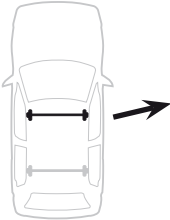


480

1

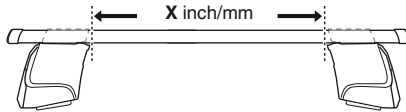


2

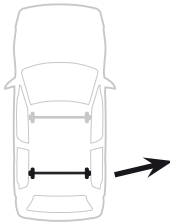


	X inch	X mm
DODGE Durango, 5-dr SUV, 03-	39 ³/₄"	1011 mm
DODGE Ram 1500, 2-dr Regular Cab, 02-08	44 ¹/₂"	1131 mm
DODGE Ram 1500, 4-dr Quad Cab, 02-08	44 ¹/₂"	1131 mm
DODGE Ram 1500, 4-dr Mega Cab, 02-08	44 ¹/₂"	1131 mm
DODGE Ram 2500/3500, 2-dr Regular Cab, 02-09	44 ¹/₂"	1131 mm
DODGE Ram 2500/3500, 4-dr Quad Cab, 02-09	44 ¹/₂"	1131 mm
DODGE Ram 2500/3500, 4-dr Mega Cab, 02-09	44 ¹/₂"	1131 mm

1



2

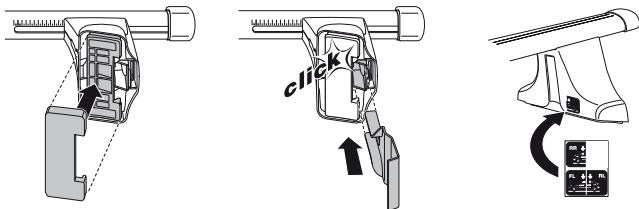
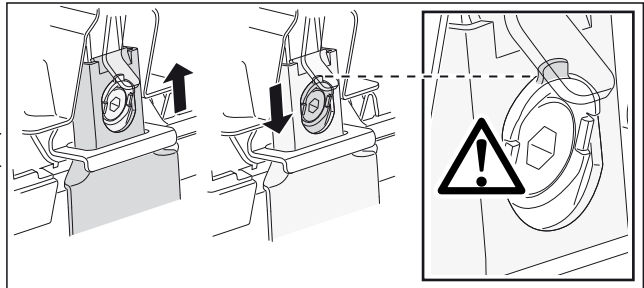
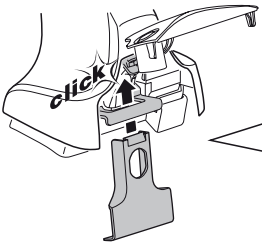
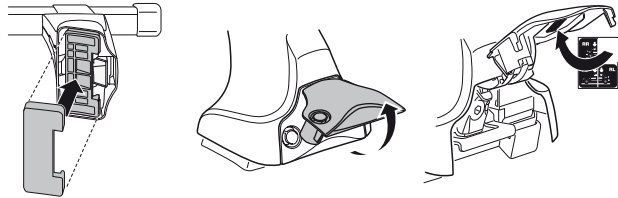
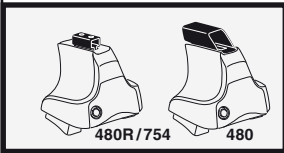
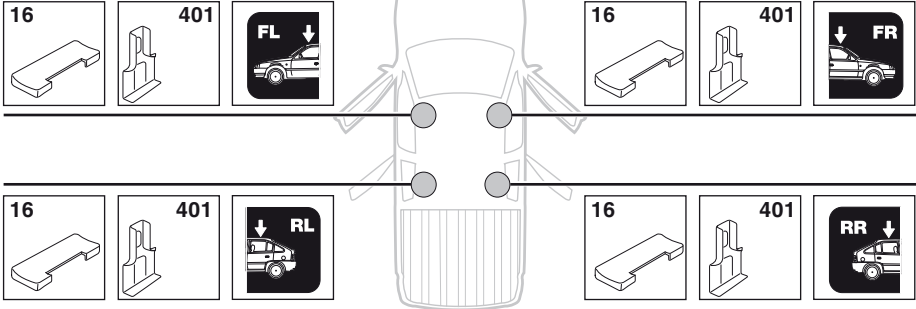


	X inch	X mm
DODGE Durango, 5-dr SUV, 03-	39 ¹/₄"	996 mm
DODGE Ram 1500, 2-dr Regular Cab, 02-08	44 ¹/₂"	1131 mm
DODGE Ram 1500, 4-dr Quad Cab, 02-08	43 ³/₄"	1111 mm
DODGE Ram 1500, 4-dr Mega Cab, 02-08	43 ³/₄"	1111 mm
DODGE Ram 2500/3500, 2-dr Regular Cab, 02-09	44 ¹/₂"	1131 mm
DODGE Ram 2500/3500, 4-dr Quad Cab, 02-09	43 ³/₄"	1111 mm
DODGE Ram 2500/3500, 4-dr Mega Cab, 02-09	43 ³/₄"	1111 mm

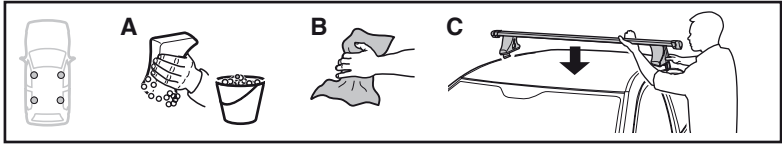
4

DODGE Durango, 5-dr SUV, 03-
DODGE Ram 1500, 2-dr Regular Cab, 02-08
DODGE Ram 1500, 4-dr Quad Cab, 02-08
DODGE Ram 1500, 4-dr Mega Cab, 02-08

DODGE Ram 2500/3500, 2-dr Regular Cab, 02-09
DODGE Ram 2500/3500, 4-dr Quad Cab, 02-09
DODGE Ram 2500/3500, 4-dr Mega Cab, 02-09

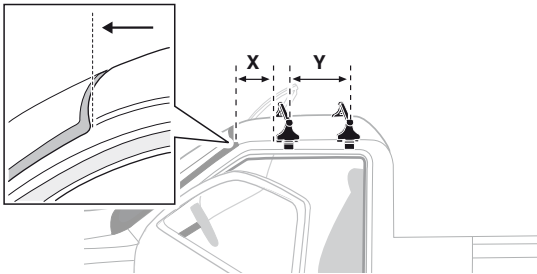


5

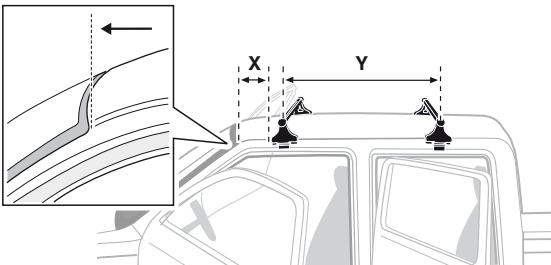


	X mm	Y mm	X inch	Y inch
DODGE Durango, 5-dr SUV, 03-	406 mm	946 mm	16"	37 1/4"
DODGE Ram 1500, 2-dr Regular Cab, 02-08	140 mm	381 mm	5 1/2"	15"
DODGE Ram 1500, 4-dr Quad Cab, 02-08	393 mm	700 mm	15 1/2"	27 1/2"
DODGE Ram 1500, 4-dr Mega Cab, 02-08	393 mm	700 mm	15 1/2"	27 1/2"
DODGE Ram 2500/3500, 2-dr Regular Cab, 02-09	140 mm	381 mm	5 1/2"	15"
DODGE Ram 2500/3500, 4-dr Quad Cab, 02-09	393 mm	700 mm	15 1/2"	27 1/2"
DODGE Ram 2500/3500, 4-dr Mega Cab, 02-09	393 mm	700 mm	15 1/2"	27 1/2"

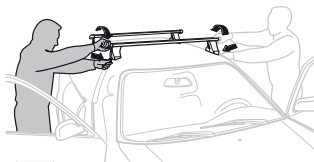
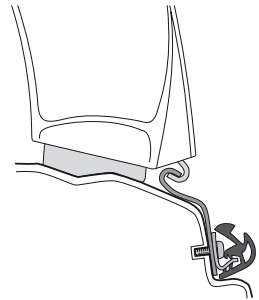
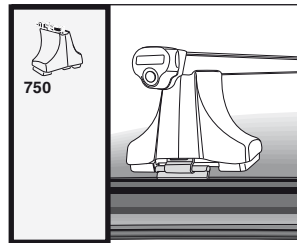
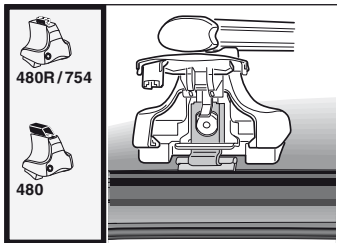
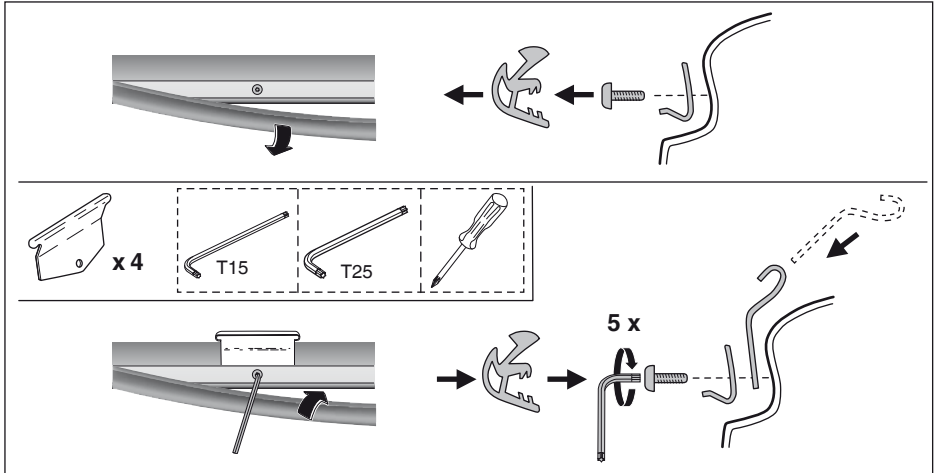
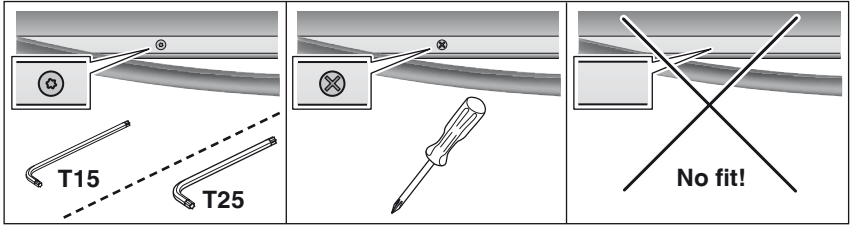
DODGE Ram 1500, 2-dr Regular Cab, 02-08
DODGE Ram 2500/3500, 2-dr Regular Cab, 02-09



DODGE Durango, 5-dr SUV, 03-
DODGE Ram 1500, 4-dr Quad Cab, 02-08
DODGE Ram 1500, 4-dr Mega Cab, 02-08
DODGE Ram 2500/3500, 4-dr Quad Cab, 02-09
DODGE Ram 2500/3500, 4-dr Mega Cab, 02-09



6



GB/US	Tighten alternately
D	Die Schrauben abwechselnd anziehen
F	Serrer alternativement chaque côté
NL	Afwisselend aan de linker- en de rechterkant aandraaien
I	Alternare il serraggio delle viti
E	Apretar alternativamente
PT	Aperter alternadamente
S	Dra åt växelvis
FIN	Kierrä vuorotellen
EST	Pinguldage vaheldumisi
LAT	Pievelciēt pamīšus
LIT	Užsukinėkite pakaitomis
PL	Śruby dokręcaj naprzemiennie
RU	Затягивайте попеременно

CZ	Pokrétla багаžníka dokręcaj dokręcaj naprzemiennie.
SK	Dofahujte striedavo
SLO	Privijajte izmenično.
HR	Naizmjenično zategnite
HU	Egy mástól függetlenül szorítandó
GR	Σφιγίγυτε εναλλάξ
TR	Dönüşümlü sıkın

中文 交替拧紧

한국어 번갈아가며 조이십시오.

日本語 交互に締め付けてください。

ไทย ชั้้นในแบบสลับ

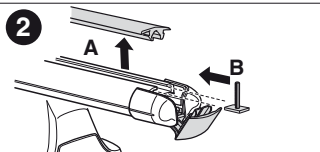
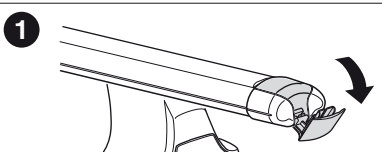
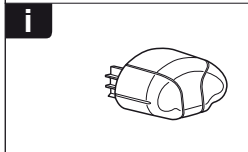
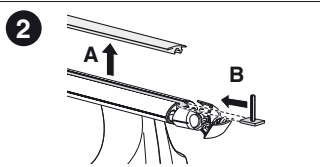
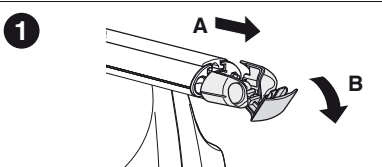
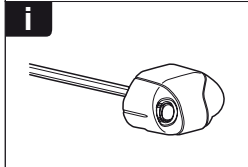
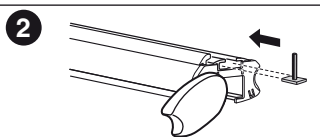
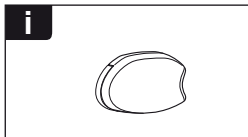
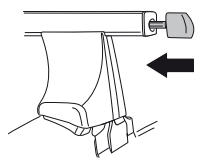
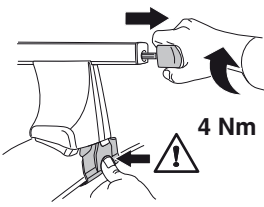
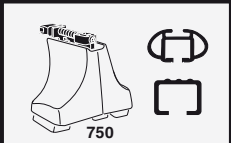
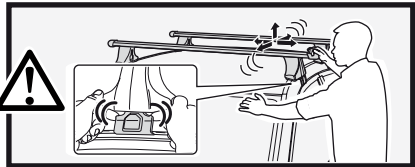
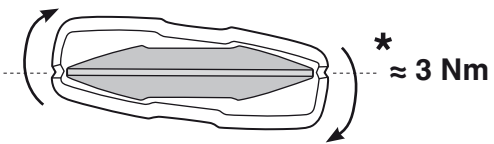
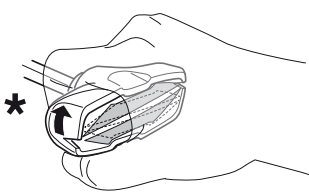
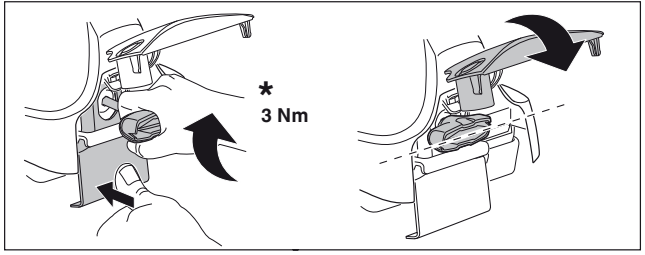
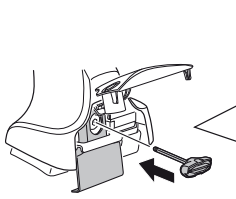
7

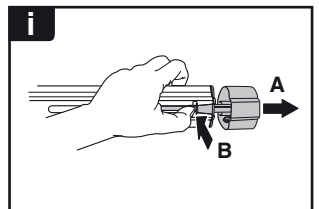
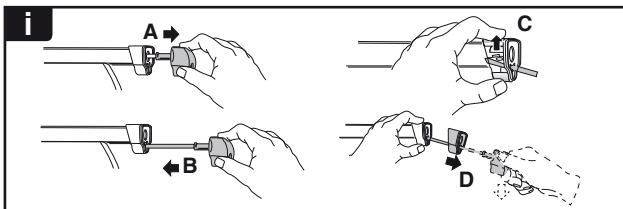
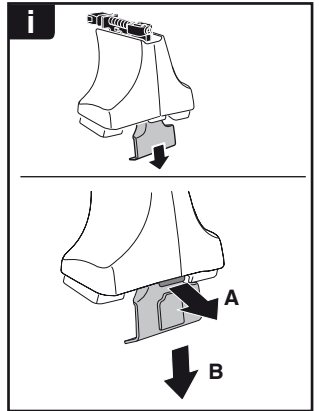
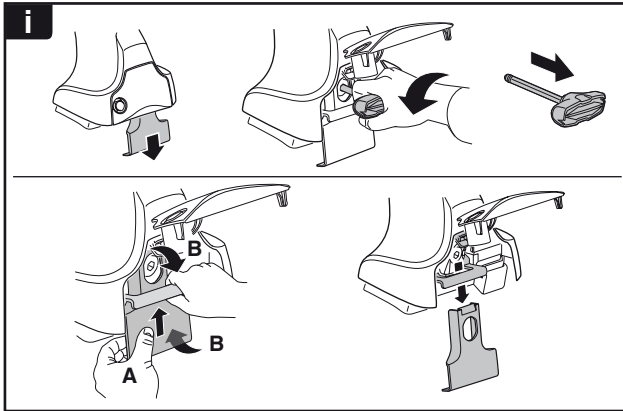
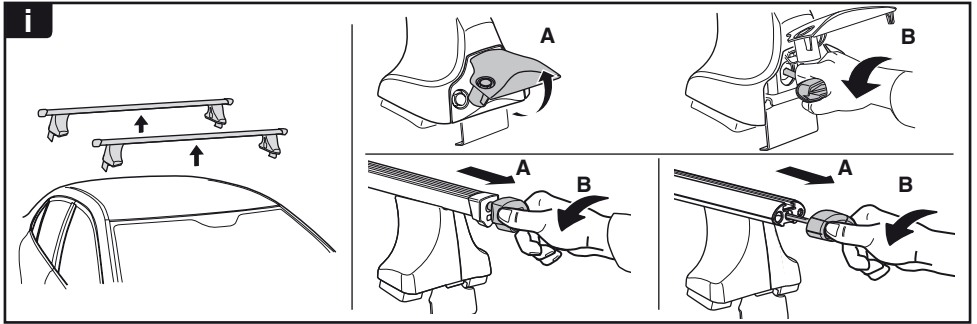


480R/754

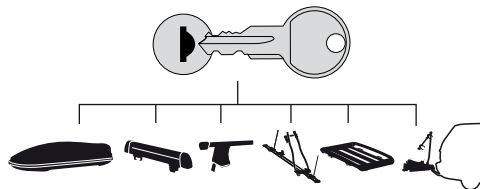


480

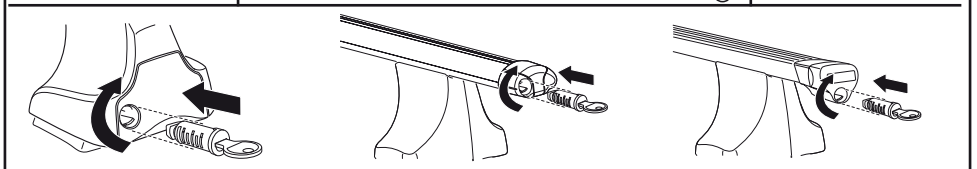




THULE
SWEDEN
**ONE
KEY
SYSTEM**



- 544 (x4)
- 596 (x6)
- 588 (x8)
- NA 510 (x10)
- EUR 452 (x12)
- ASIA



WW ▶ Thule Sweden AB, Box 69, 330 33 Hillerstorp, SWEDEN
NA ▶ Thule Inc., 42 Silvermine Road, Seymour, Connecticut 06483, USA

info@thule.com
customer.service@thule.com

www.thule.com