

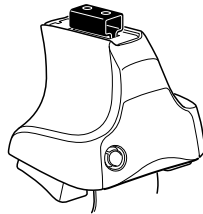
Kit 1510

HONDA Pilot, 5-dr SUV, *06-08, 09–

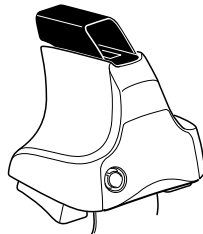
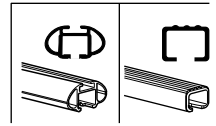
HONDA Ridgeline, 4-dr Quad Cab, *06-08, 09–

*North America

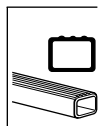
w/o factory rack



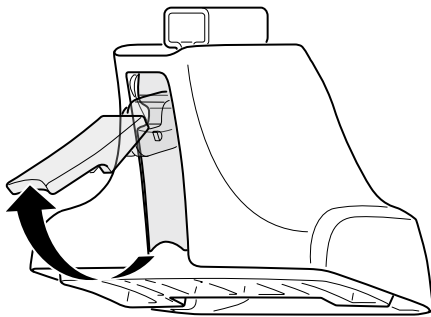
754 Rapid System
480R Rapid Traverse (North America)



480 Traverse (North America)



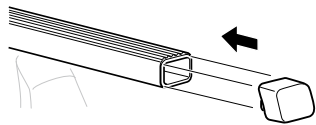
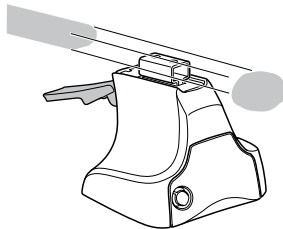
1



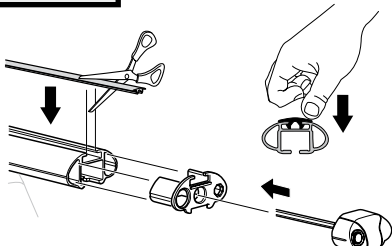
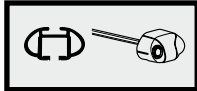
2



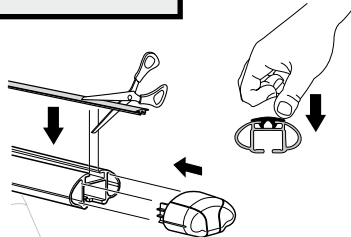
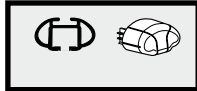
754 Rapid System
480R Rapid Traverse
(North America)



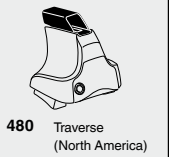
x4



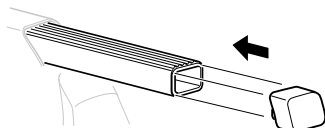
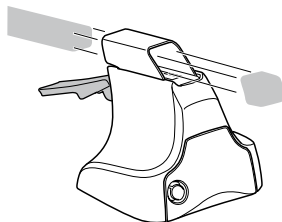
x4



x4

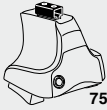


480 Traverse
(North America)

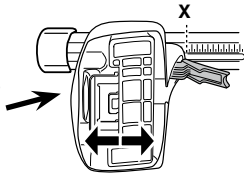


x4

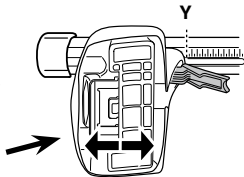
3



754 Rapid System



	X
HONDA Pilot, 5-dr SUV, *06-08	56
HONDA Pilot, 5-dr SUV, *09–	58,5
HONDA Ridgeline, 4-dr Quad Cab, *06-08	56
HONDA Ridgeline, 4-dr Quad Cab, *09–	58,5



	Y
HONDA Pilot, 5-dr SUV, *06-08	53,5
HONDA Pilot, 5-dr SUV, *09–	59,5
HONDA Ridgeline, 4-dr Quad Cab, *06-08	53,5
HONDA Ridgeline, 4-dr Quad Cab, *09–	59,5

3



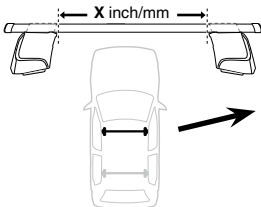
480R Rapid Traverse



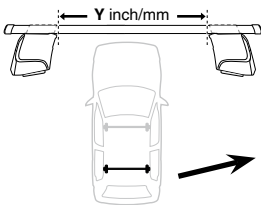
480 Traverse



(North America)

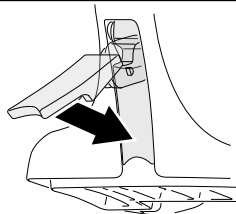


	X inch	X mm
HONDA Pilot, 5-dr SUV, *06-08	47 1/2"	1211 mm
HONDA Pilot, 5-dr SUV, *09–	48 3/4"	1237 mm
HONDA Ridgeline, 4-dr Quad Cab, *06-08	47 1/2"	1211 mm
HONDA Ridgeline, 4-dr Quad Cab, *09–	48 3/4"	1237 mm



	Y inch	Y mm
HONDA Pilot, 5-dr SUV, *06-08	46 3/4"	1186 mm
HONDA Pilot, 5-dr SUV, *09–	49 1/8"	1247 mm
HONDA Ridgeline, 4-dr Quad Cab, *06-08	46 3/4"	1186 mm
HONDA Ridgeline, 4-dr Quad Cab, *09–	49 1/8"	1247 mm

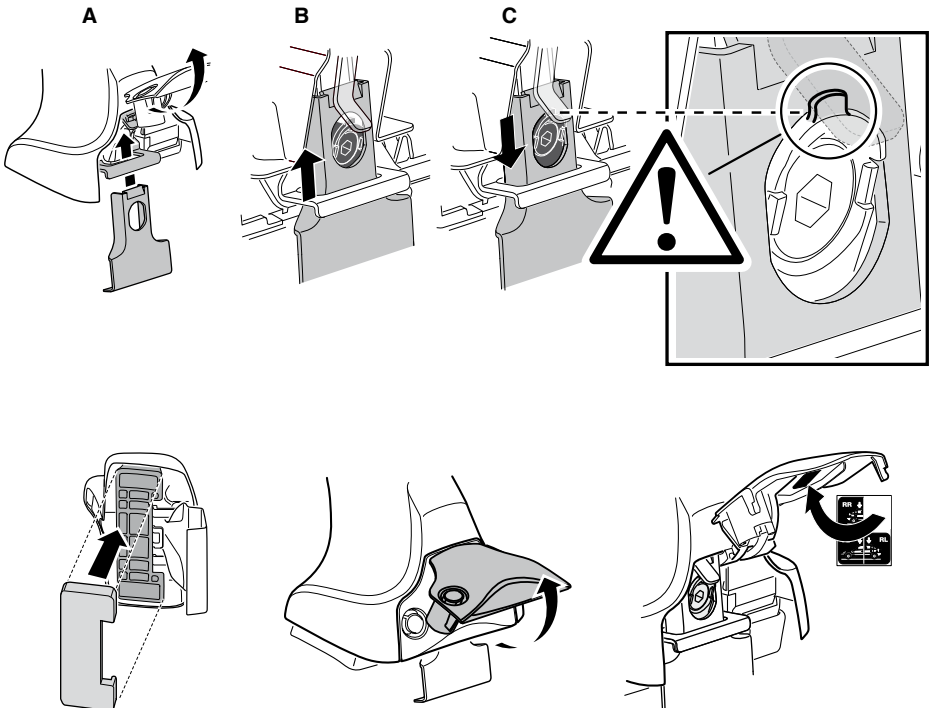
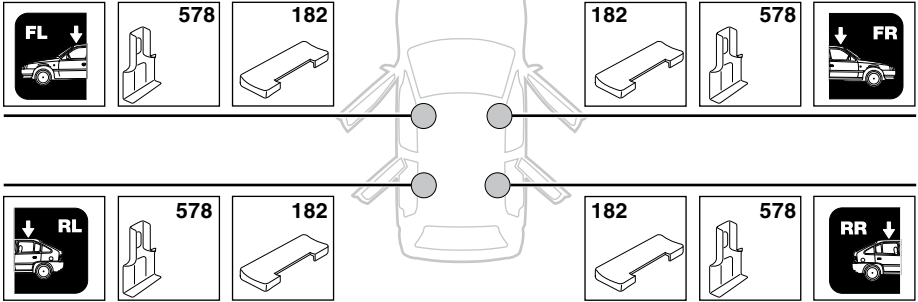
4



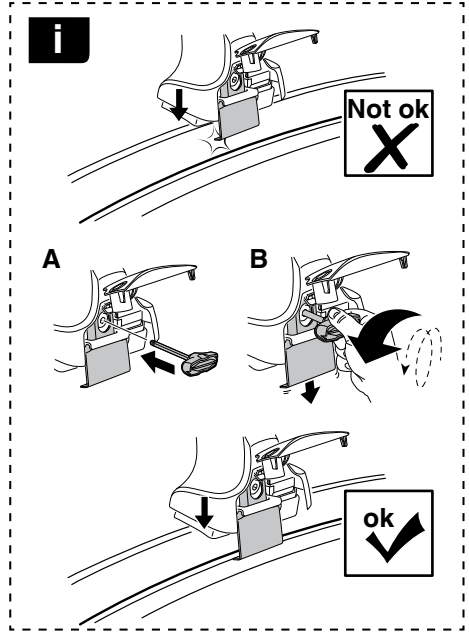
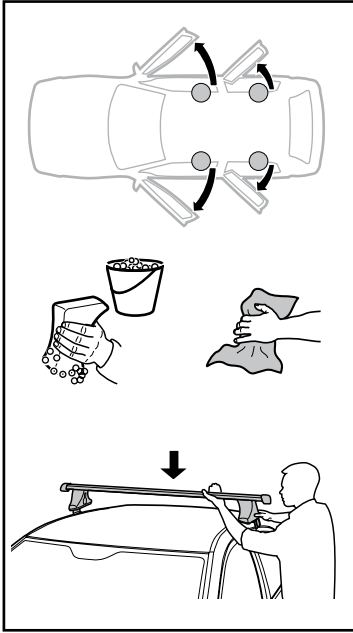
5

HONDA Pilot, 5-dr SUV, *06-08, 09-

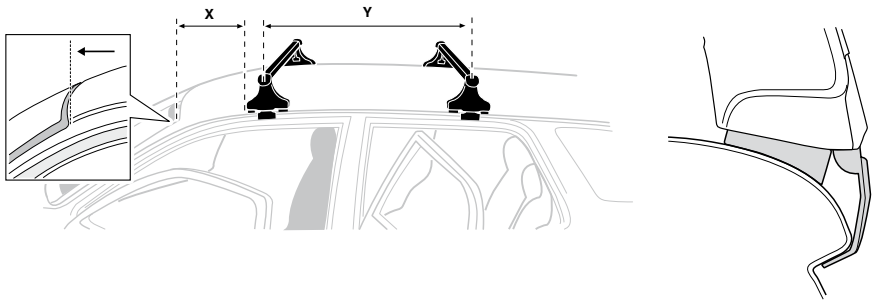
HONDA Ridgeline, 4-dr Quad Cab, *06-08, 09-



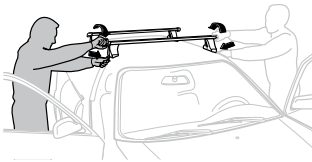
6



	X mm	Y mm	X inch	Y inch
HONDA Pilot, 5-dr SUV, *06-08, 09-	260 mm	750 mm	10 1/4"	29 1/2"
HONDA Ridgeline, 4-dr Quad Cab, *06-08, 09-	260 mm	750 mm	10 1/4"	29 1/2"



7



GB/US Tighten alternately
D Die Schrauben abwechselnd anziehen
F Serrer alternativement chaque côté
NL Afwisselend aan de linker- en de rechterkant aandraaien
I Alternare il serraggio delle viti
E Apertar alternativamente
PT Aperte alternadamente
S Dra åt växelvis
FIN Kierrä vuorotellen
EST Pinguldage vaheldumisi
LAT Pievelciēt pamišus
LIT Užsukinėkite pakaitomis
PL Śruby dokręcaj naprzemiennie
RU Затягивайте попеременно

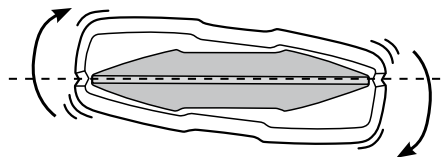
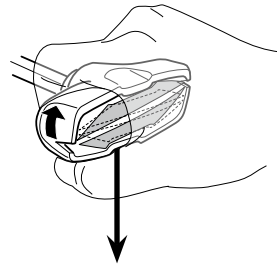
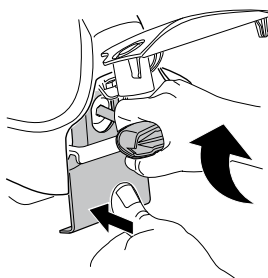
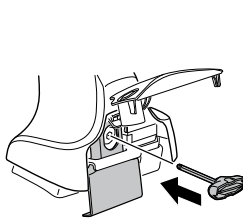
CZ Pokrétla bagazníka dokręcaj dokręcaj naprzemiennie.
SK Doťahujte striedavo
SLO Privijajte izmenično.
HR Naizmenično zategnite
HU Egymástól függetlenül szorítandó
GR Σφιγγεται εναλλάξ
TR Dönüşümlü sıkın

中文 交替拧紧

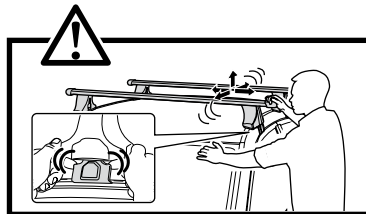
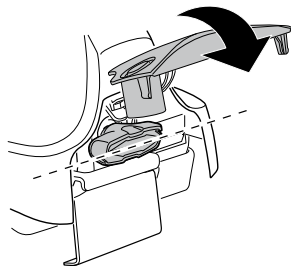
한국어 번갈아 가며 조이십시오.

日本語 交互に締め付けてください。

ไทย ชั้ในแบบสลับ



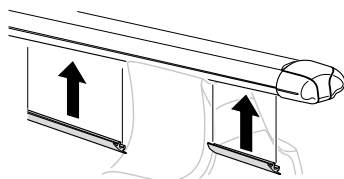
≈ 3 Nm

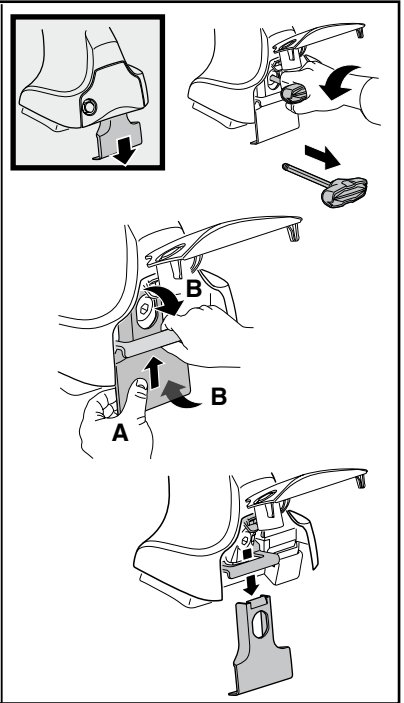
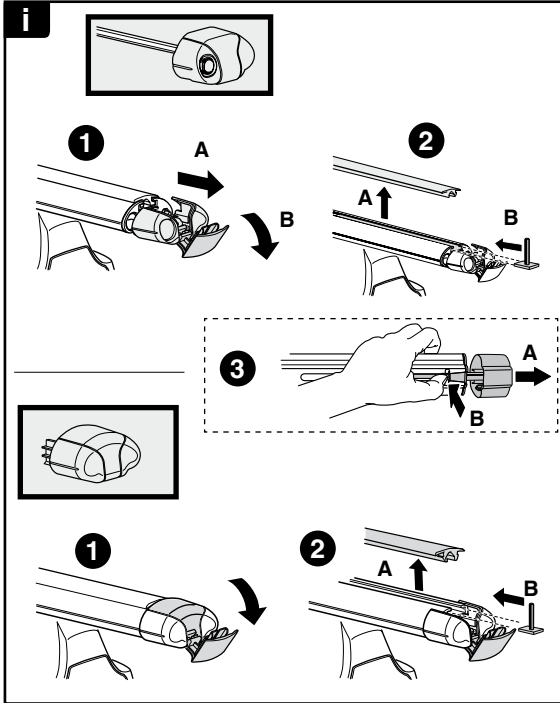


8

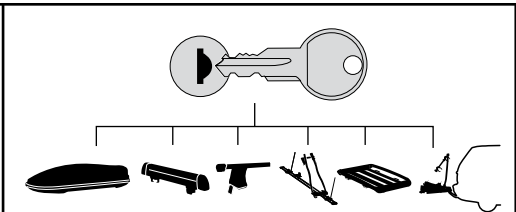


x1
17 mm

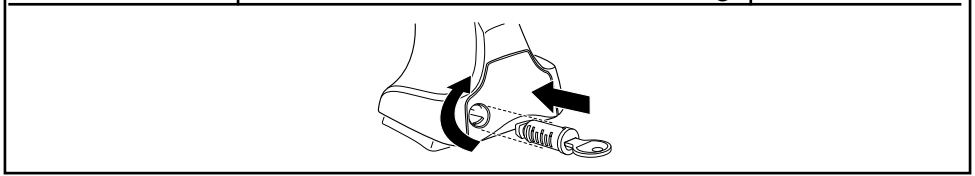




THULE
SWEDEN
**ONE
KEY
SYSTEM**



- 544 (x4)
 - 596 (x6)
 - 588 (x8)
 - 510 (x10)
 - 452 (x12)
- NA
EUR
ASIA



WW ▶ Thule Sweden AB, Box 69, 330 33 Hillerstorp, SWEDEN
NA ▶ Thule Inc., 42 Silvermine Road, Seymour, Connecticut 06483, USA

info@thule.com
customer.service@thule.com

www.thule.com