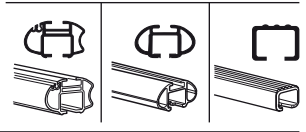


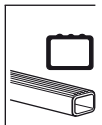
Kit 1446

TOYOTA Corolla, 4-dr Sedan, 07-

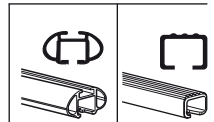
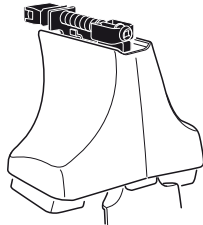
480R
754



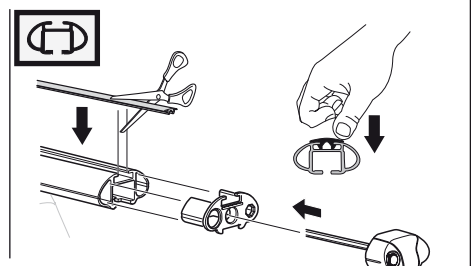
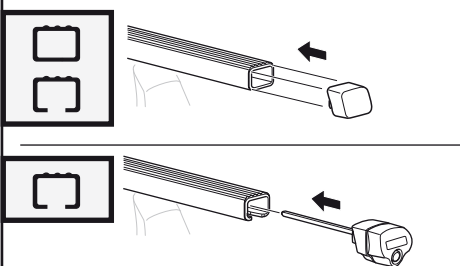
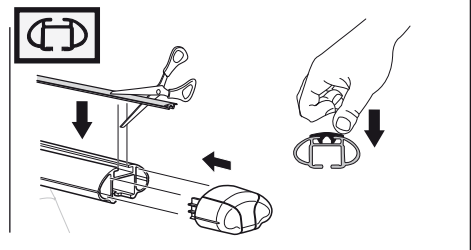
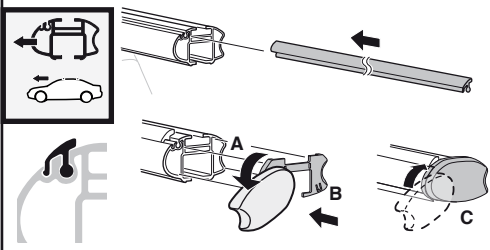
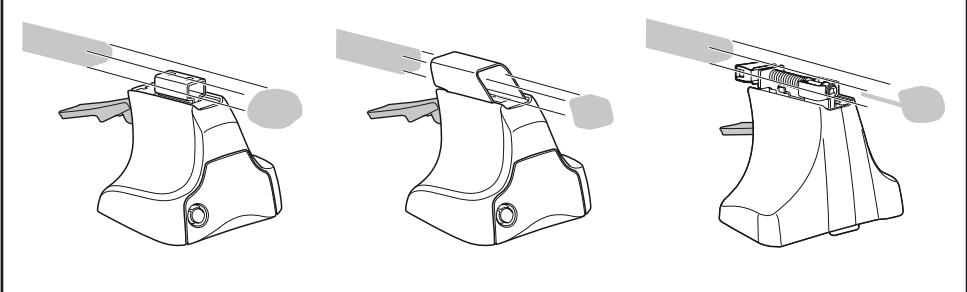
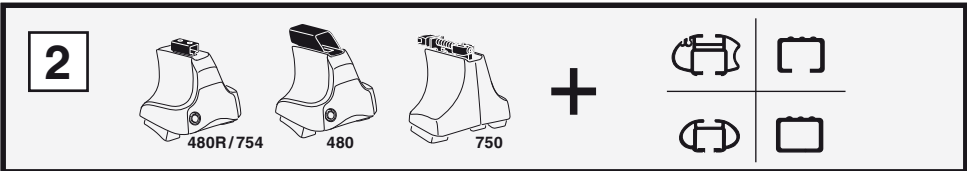
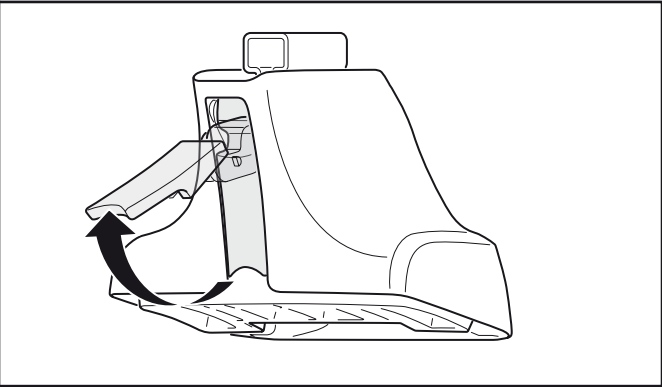
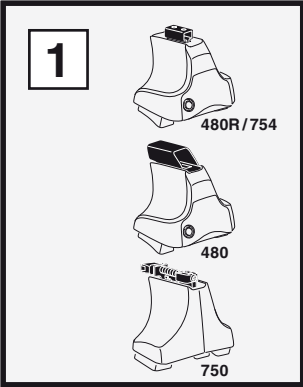
480



750



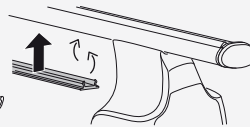
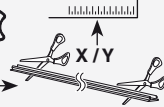
Kit



3



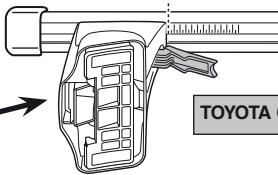
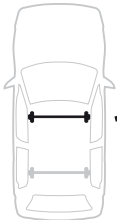
754



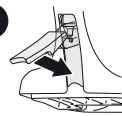
750



1



2

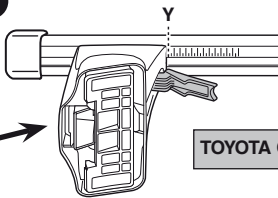


TOYOTA Corolla, 4-dr Sedan, 07-

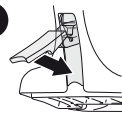
X

34,5

1



2



TOYOTA Corolla, 4-dr Sedan, 07-

Y

32

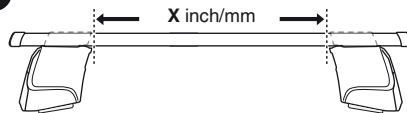


480R



480

1



2



X inch

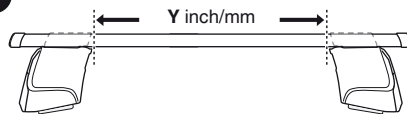
X mm

TOYOTA Corolla, 4-dr Sedan, 07-

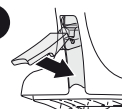
39 1/4"

996 mm

1



2



Y inch

Y mm

TOYOTA Corolla, 4-dr Sedan, 07-

38 1/4"

971 mm

4

TOYOTA Corolla, 4-dr Sedan, 07-

312



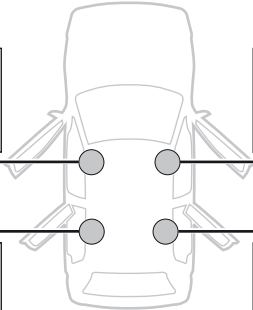
1017



311



1017



314



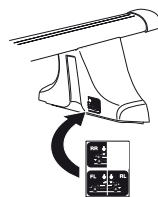
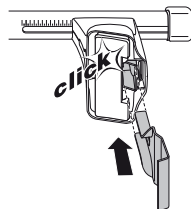
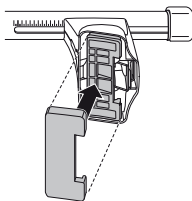
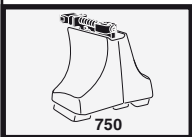
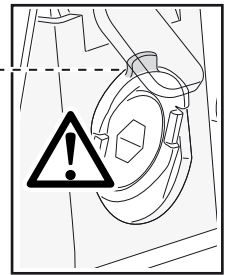
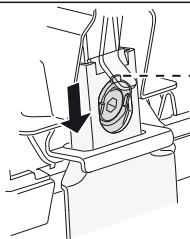
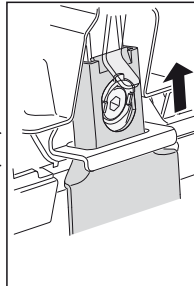
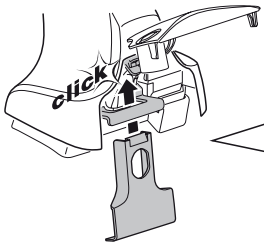
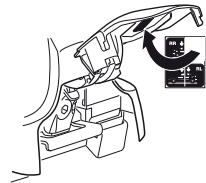
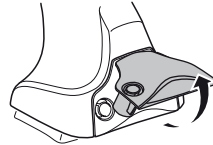
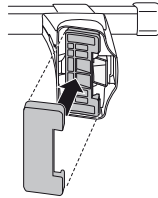
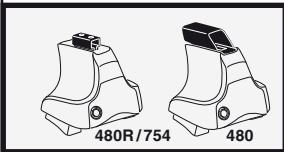
1018



313



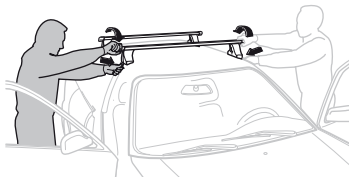
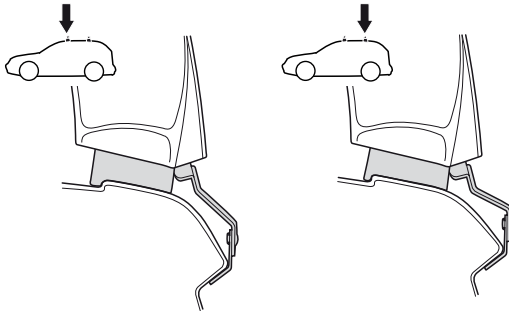
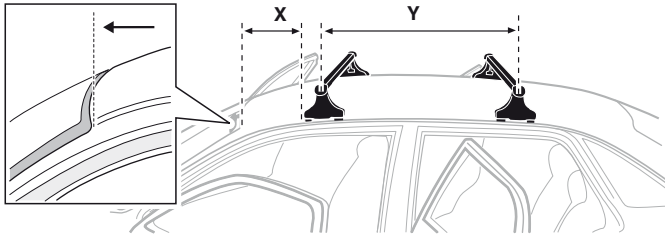
1018



5



	X mm	Y mm	X inch	Y inch
TOYOTA Corolla, 4-dr Sedan, 07-	215 mm	715 mm	8 1/2"	28 1/8"



GB/US Tighten alternately

D Die Schrauben abwechselnd anziehen

F Serrer alternativement chaque côté

NL Afwisselend aan de linker- en de rechterkant aandraaien

I Alternare il serraggio delle viti

E Apertar alternativamente

PT Aperte alternadamente

S Dra åt växelvis

FIN Kierrä vuorotellen

EST Pinguldage vaheldumisi

LAT Pielieciet pamišus

LIT Užsukinėkite pakaitomis

PL Śruby dokręcaj naprzemiennie

RU Затягивайте попеременно

CZ Pokręťta bagažníka dokręcaj dokręcaj naprzemiennie.

SK Doťahujte striedavo

SLO Privijajte izmenično.

HR Naizmjenično zategnite

HU Egymástól függetlenül szorítandó

GR Σφιγγετε εναλλάξ

TR Dönüşümlü sıkın

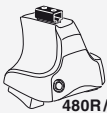
中文 交替拧紧

한국어 번갈아 가며 조이십시오.

日本語 交互に締め付けてください。

ไทย ชันโนแบบสลับ

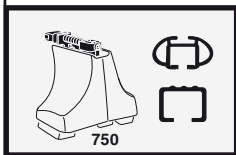
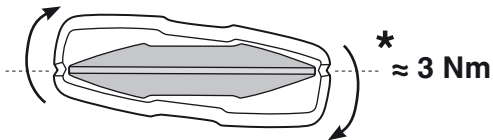
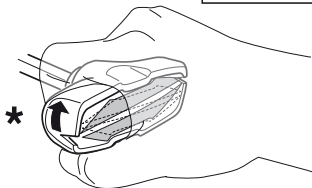
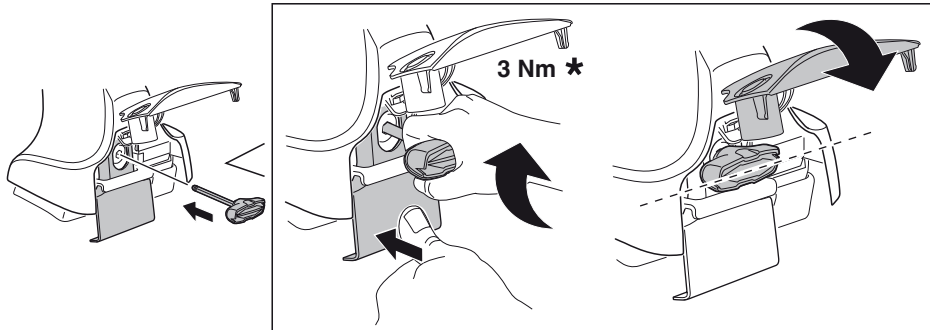
6



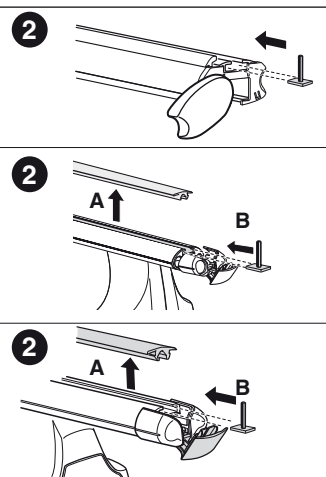
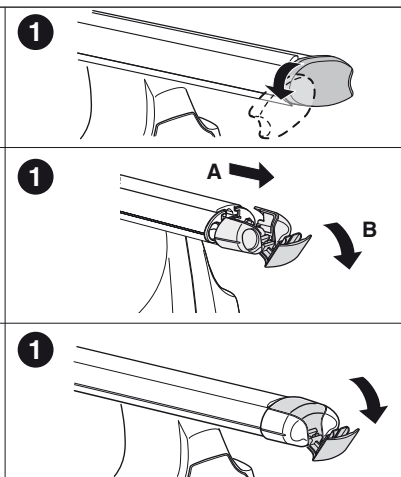
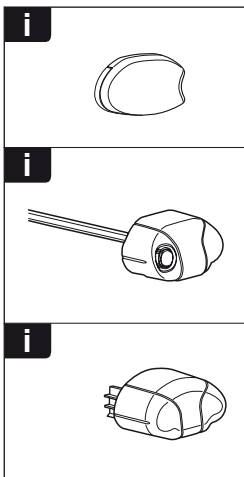
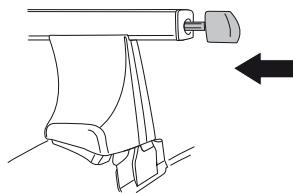
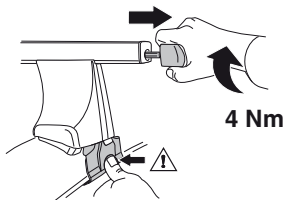
480R/754

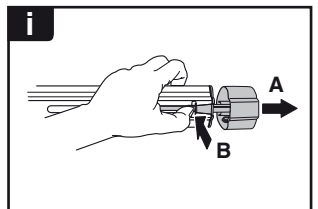
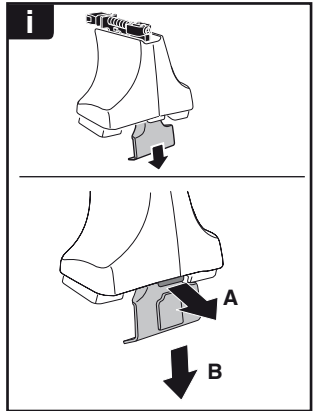


480



750





THULE
SWEDEN
**ONE
KEY
SYSTEM**



- 544 (x4)
- 596 (x6)
- 588 (x8)
- NA 510 (x10)
- EUR 452 (x12)
- ASIA



WW ▶ Thule Sweden AB, Box 69, 330 33 Hillerstorp, SWEDEN
NA ▶ Thule Inc., 42 Silvermine Road, Seymour, Connecticut 06483, USA

info@thule.com
customer.service@thule.com

www.thule.com