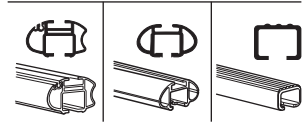
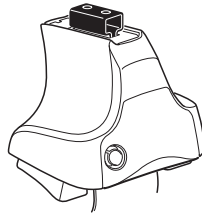


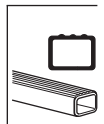
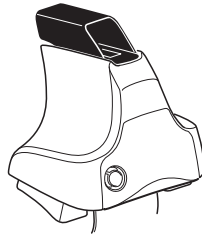
# Kit 1406

VOLKSWAGEN Golf Plus, 5-dr Hatchback, 05  
VOLKSWAGEN Golf Plus, 5-dr Hatchback, 06-

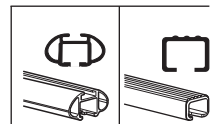
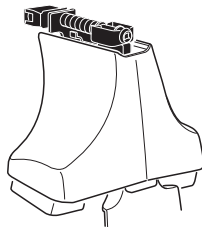
480R  
754



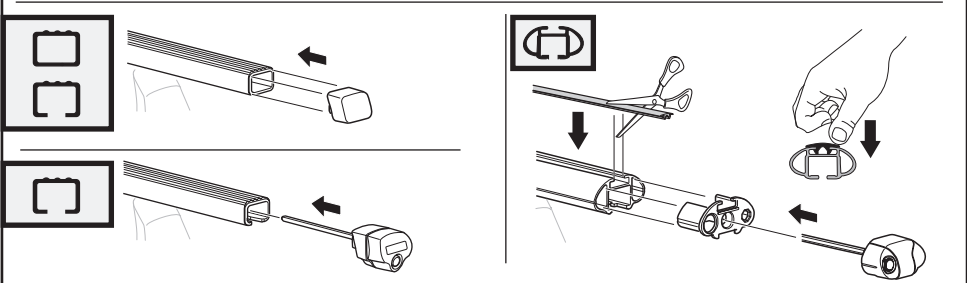
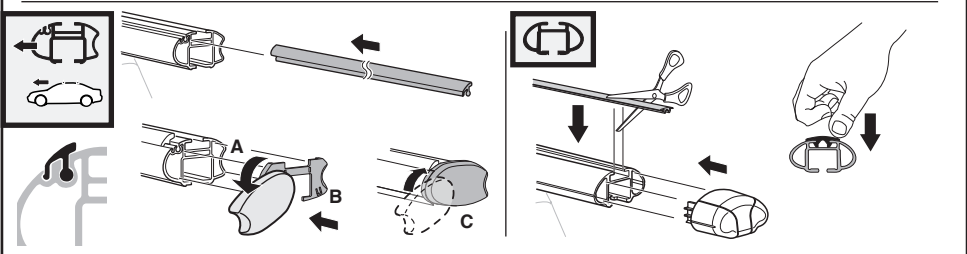
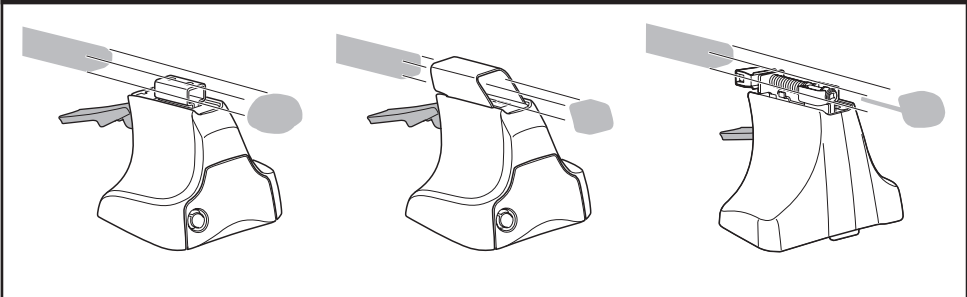
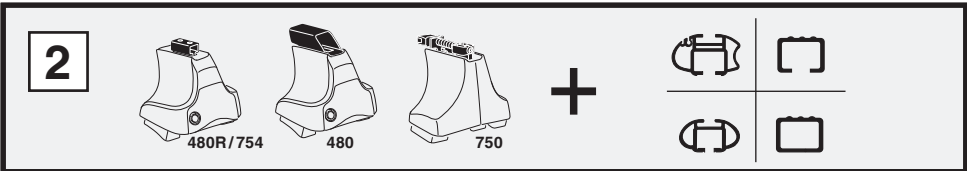
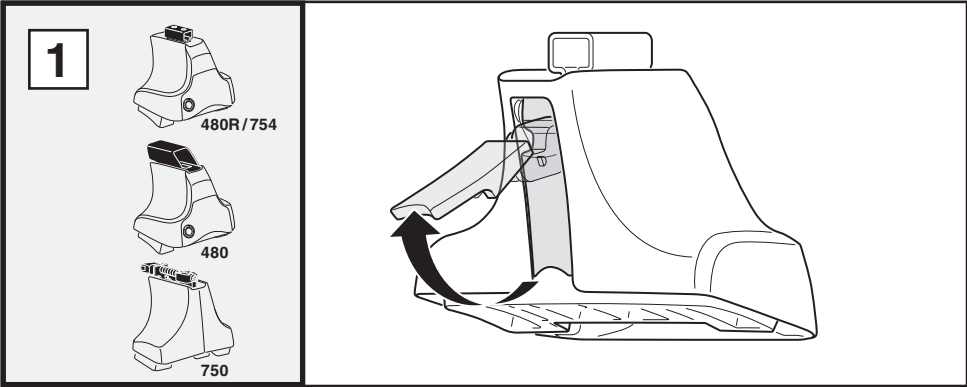
480



750



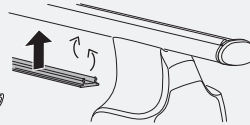
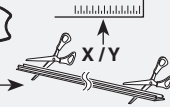




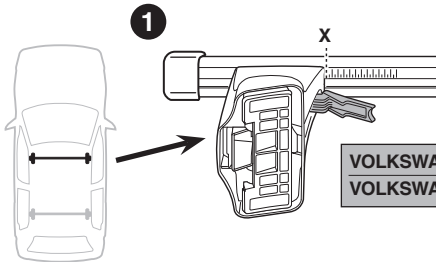
**3**



754



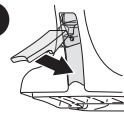
750



**1**

X

**2**

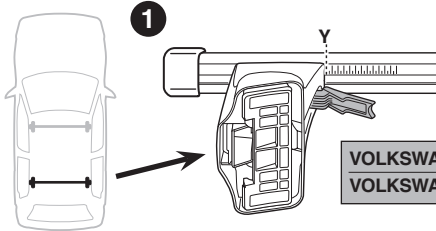


**VOLKSWAGEN Golf Plus, 5-dr Hatchback, 05**

X

**VOLKSWAGEN Golf Plus, 5-dr Hatchback, 06-**

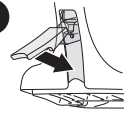
37



**1**

Y

**2**



**VOLKSWAGEN Golf Plus, 5-dr Hatchback, 05**

Y

**VOLKSWAGEN Golf Plus, 5-dr Hatchback, 06-**

30

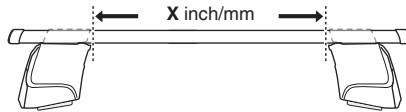


480R



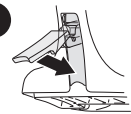
480

**1**



X inch/mm

**2**



**VOLKSWAGEN Golf Plus, 5-dr Hatchback, 05**

X inch

X mm

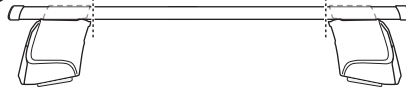
**VOLKSWAGEN Golf Plus, 5-dr Hatchback, 06-**

40 1/4"

1021 mm

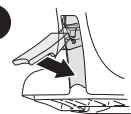


**1**



Y inch/mm

**2**



**VOLKSWAGEN Golf Plus, 5-dr Hatchback, 05**

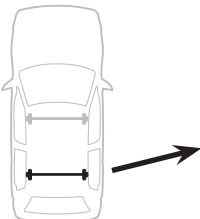
Y inch

Y mm

**VOLKSWAGEN Golf Plus, 5-dr Hatchback, 06-**

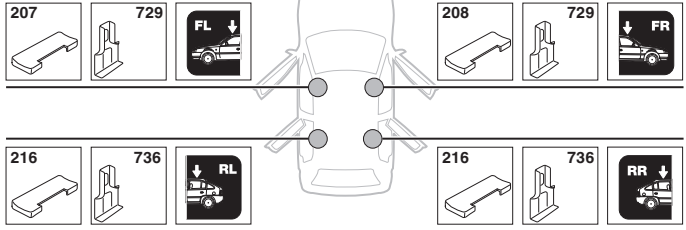
37 1/2"

951 mm

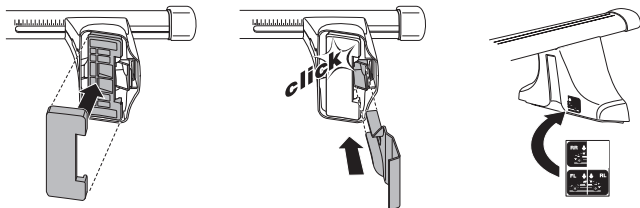
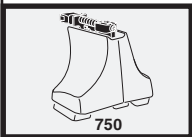
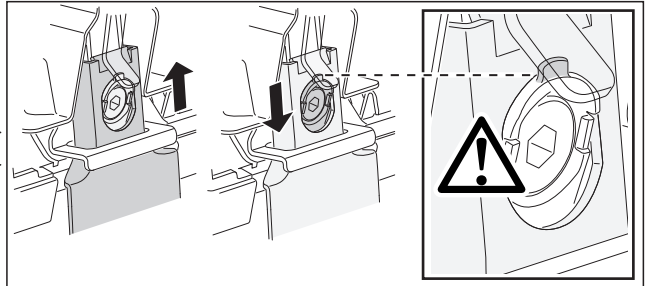
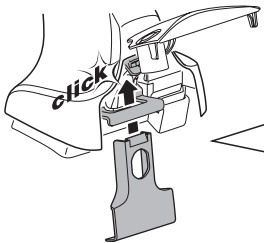
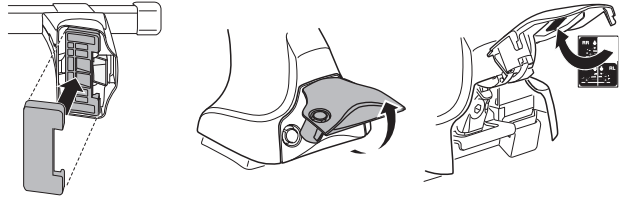
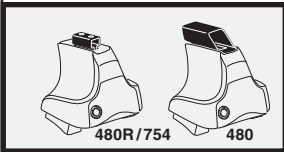
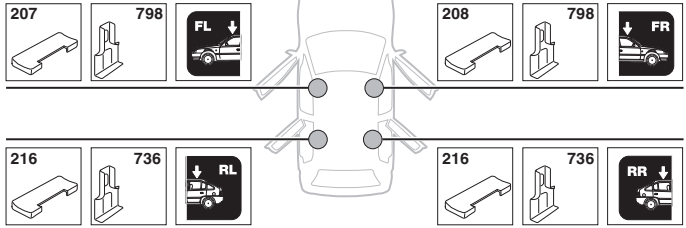


4

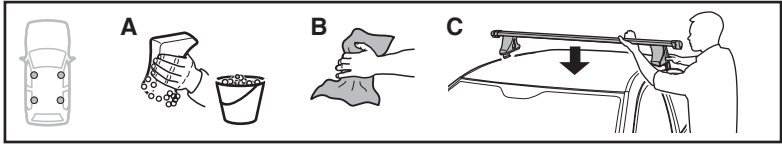
VOLKSWAGEN Golf Plus,  
5-dr Hatchback, 05



VOLKSWAGEN Golf Plus,  
5-dr Hatchback, 06-

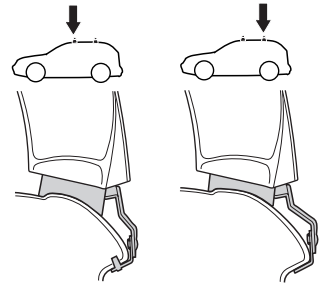
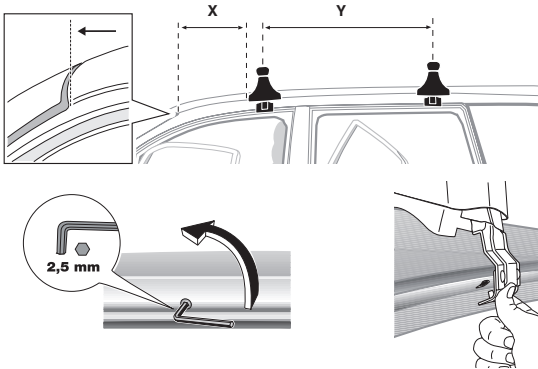


5

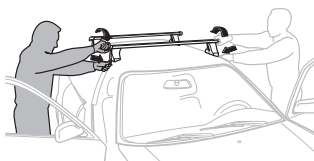
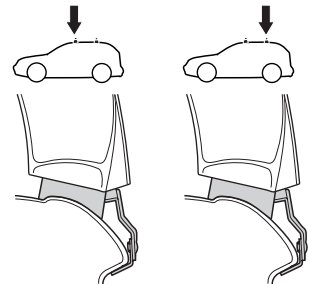
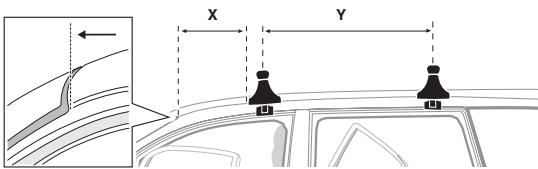


|   | X mm   | Y mm   | X inch | Y inch  |
|---|--------|--------|--------|---------|
| VOLKSWAGEN Golf Plus, 5-dr Hatchback, 05  | 228 mm | 850 mm | 9"     | 33 1/2" |
| VOLKSWAGEN Golf Plus, 5-dr Hatchback, 06– | 228 mm | 850 mm | 9"     | 33 1/2" |

**VOLKSWAGEN Golf Plus, 5-dr Hatchback, 05**



**VOLKSWAGEN Golf Plus, 5-dr Hatchback, 06–**



- GB/US** Tighten alternately
- D** Die Schrauben abwechselnd anziehen
- F** Serrer alternativement chaque côté
- NL** Afwisselend aan de linker- en de rechterkant aandraaien
- I** Alternare il serraggio delle viti
- E** Apretar alternativamente
- PT** Aperte alternadamente
- S** Dra åt växelsvis
- FIN** Kierrä vuorotellen
- EST** Pinguldage vaheldumisi
- LAT** Pievelciēt pamišus
- LIT** Užsukinėkite pakaitomis
- PL** Śruby dokręcaj naprzemiennie
- RU** Затягивайте попеременно

- CZ** Pokręťta bagażnika dokręcaj dokręcaj naprzemiennie.
- SK** Dofahujte striedavo
- SLO** Privijajte izmenično.
- HR** Naizmjenično zategnite
- HU** Egmástól függetlenül szorítandó
- GR** Σφιγίγες εναλλάξ
- TR** Dönüşümlü sıkın
- 中文** 交替拧紧
- 한국어** 번갈아 가며 조이십시오.
- 日本語** 交互に締め付けてください。
- ไทย** ชั้้นในแบบสลับ

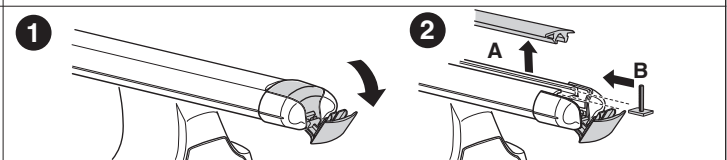
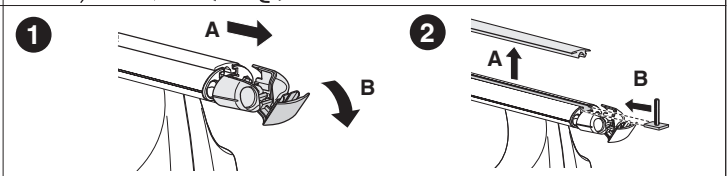
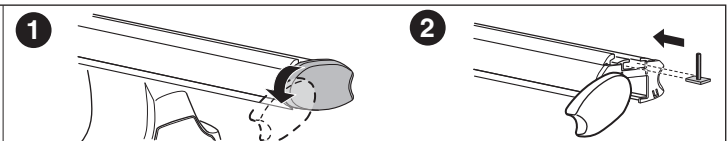
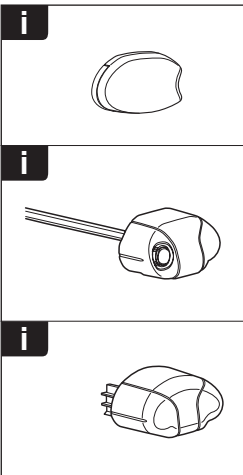
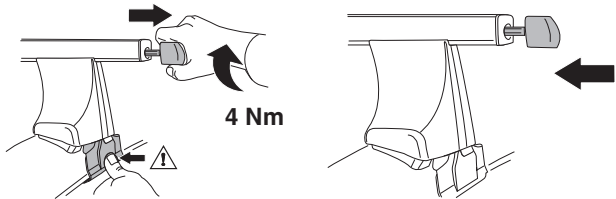
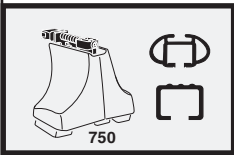
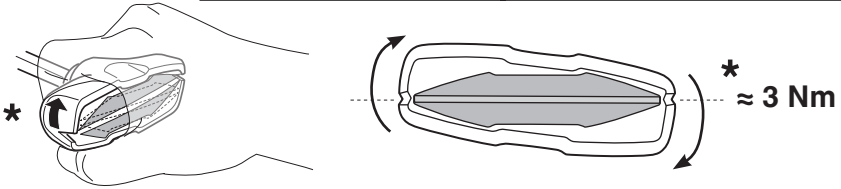
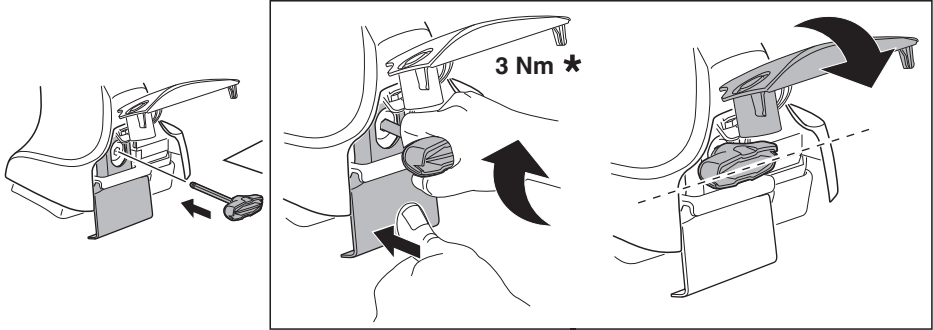
6

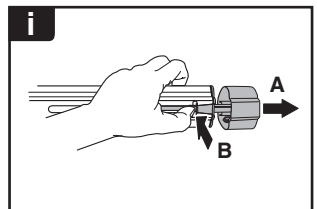
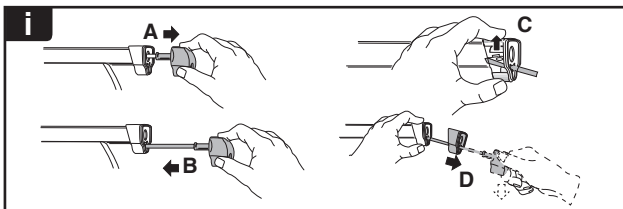
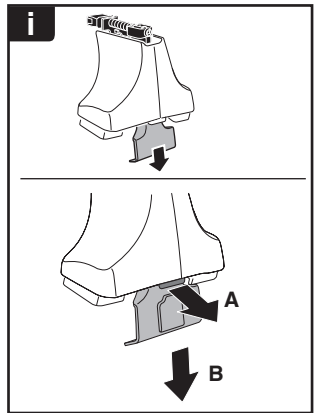
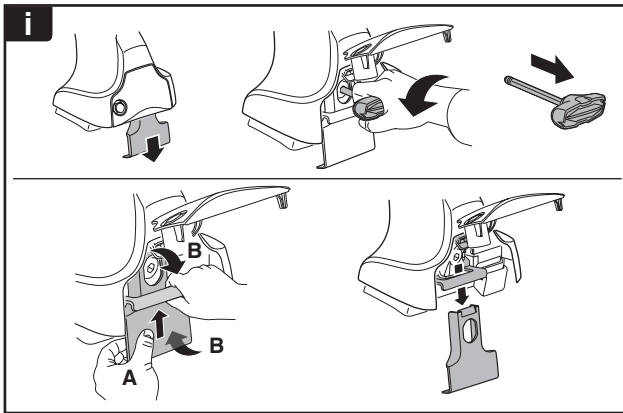
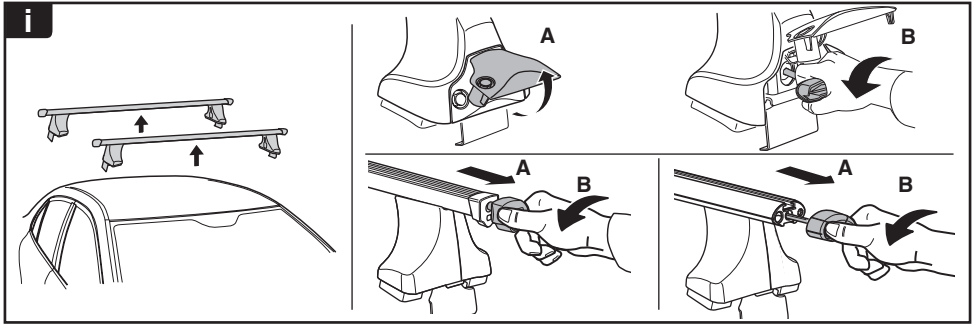


480R/754

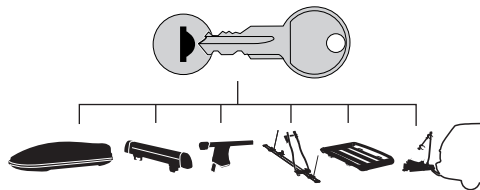


480

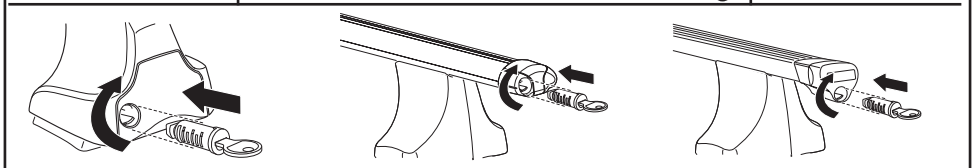




**THULE**  
SWEDEN  
**ONE  
KEY  
SYSTEM**



- 544 (x4)
- 596 (x6)
- 588 (x8)
- NA 510 (x10)
- EUR 452 (x12)
- ASIA 452 (x12)



WW ▶ Thule Sweden AB, Box 69, 330 33 Hillerstorp, SWEDEN  
NA ▶ Thule Inc., 42 Silvermine Road, Seymour, Connecticut 06483, USA

info@thule.com  
customer.service@thule.com

www.thule.com