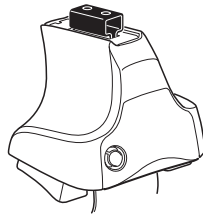
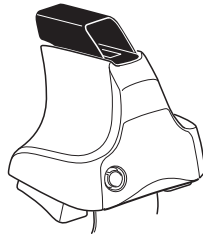
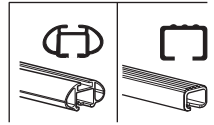


# Kit 1356

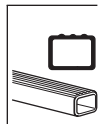
MITSUBISHI Colt, 5-dr Hatchback, 04-



754 Rapid System  
480R Rapid Traverse (North America)



480 Traverse (North America)



xx kg  
xx lbs

+ 7 kg  
15,4 lbs =

**Max.  
50 kg**

**Max.  
110 lbs**

80 km/h  
50 Mph

130 km/h  
80 Mph

40 km/h  
25 Mph

km/h  
Mph

THULE

Kit XXXX

instructions

x1

x4

x4

754 Rapid System

480R Rapid Traverse (North America)

x4

x4

754 Rapid System

480R Rapid Traverse (North America)

x1

x4

x4

480 Traverse (North America)

x2

x2

x2

x4

x4

x2

x2

x2

x2

x2

x2

x2

x2

x2

x2

x2

x2

x2

x2

x2

(North America)

667 x1

669 x1

1076 x2

95 x1

96 x1

97 x1

98 x1

FR

RL

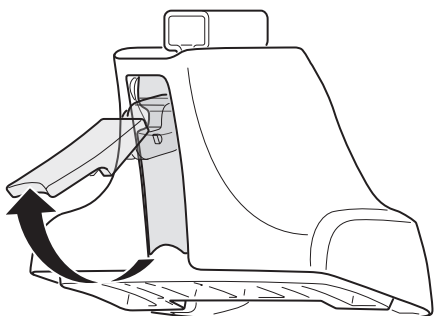
FL

RR

x1

**Kit**

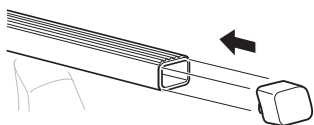
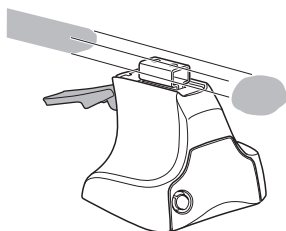
1



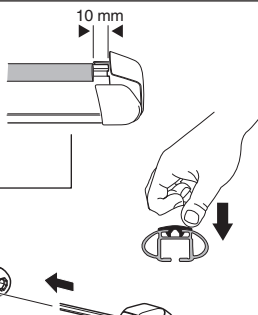
2



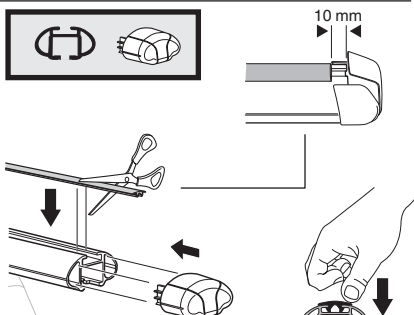
754 Rapid System  
480R Rapid Traverse  
(North America)



x4



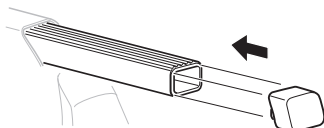
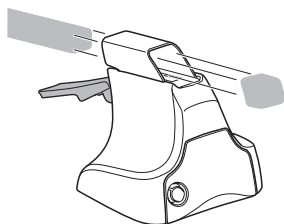
x4



x4

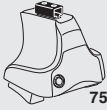


480 Traverse  
(North America)

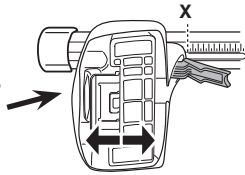


x4

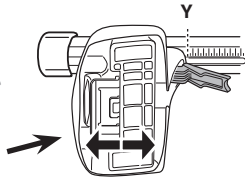
**3**



**754** Rapid System



	<b>X</b>
<b>MITSUBISHI Colt, 5-dr Hatchback, 04-</b>	<b>37,5</b>



	<b>Y</b>
<b>MITSUBISHI Colt, 5-dr Hatchback, 04-</b>	<b>33,5</b>

**3**



**480R** Rapid Traverse



**480** Traverse

**(North America)**

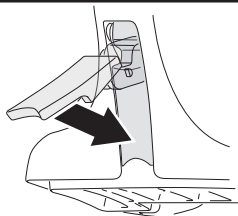


	<b>X inch</b>	<b>X mm</b>
<b>MITSUBISHI Colt, 5-dr Hatchback, 04-</b>	<b>40 <sup>3</sup>/<sub>8</sub>"</b>	<b>1026 mm</b>



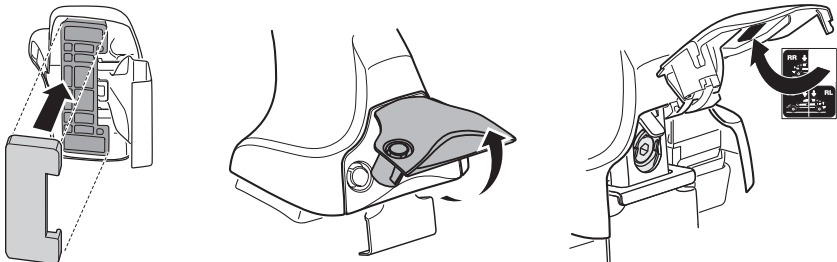
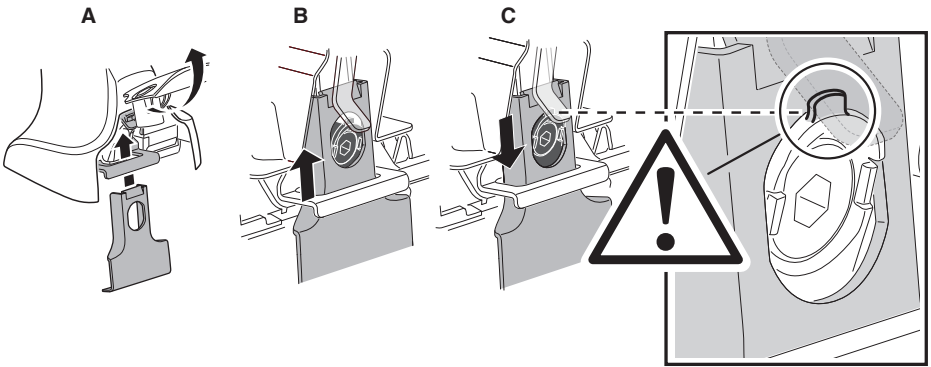
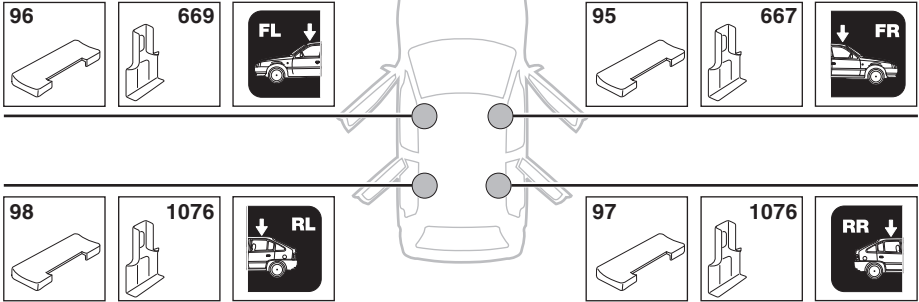
	<b>Y inch</b>	<b>Y mm</b>
<b>MITSUBISHI Colt, 5-dr Hatchback, 04-</b>	<b>38 <sup>7</sup>/<sub>8</sub>"</b>	<b>986 mm</b>

**4**

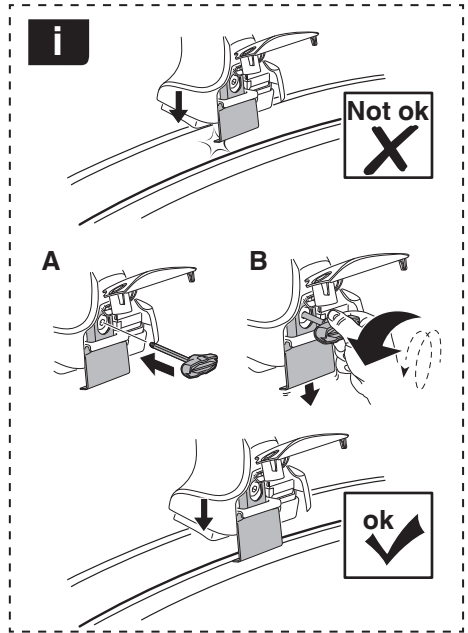
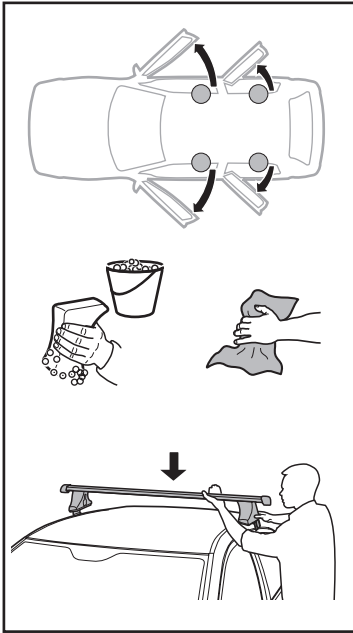


5

MITSUBISHI Colt, 5-dr Hatchback, 04-

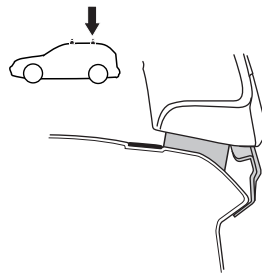
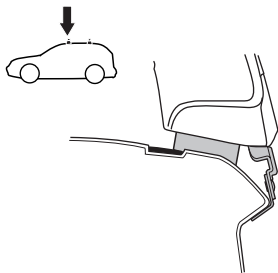
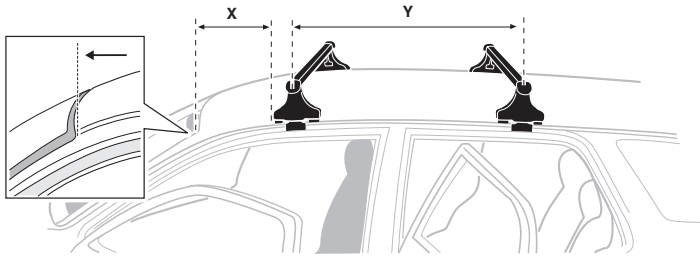


6

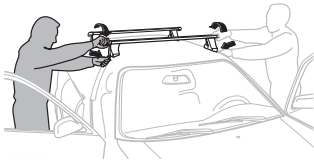


MITSUBISHI Colt, 5-dr Hatchback, 04-

X mm	Y mm	X inch	Y inch
345 mm	700 mm	13 5/8"	27 1/2"



7



**GB/US** Tighten alternately  
**D** Die Schrauben abwechselnd anziehen  
**F** Serrer alternativement chaque côté  
**NL** Afwisselend aan de linker- en de rechterkant aandraaien  
**I** Alternare il serraggio delle viti  
**E** Apertar alternativamente  
**PT** Aperte alternadamente  
**S** Dra åt växelvis  
**FIN** Kierrä vuorotellen  
**EST** Pinguldage vaheldumisi  
**LAT** Pieļieciet pamišus  
**LIT** Užsukinėkite pakaitomis  
**PL** Śruby dokręcaj naprzemiennie  
**RU** Затягивайте попеременно

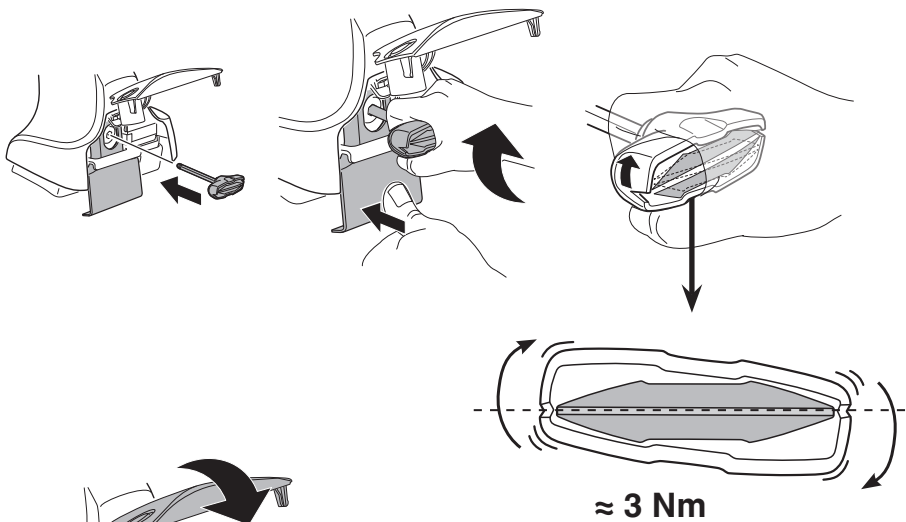
**CZ** Pokręťta bagażnika dokręcaj naprzemiennie.  
**SK** Dofahajte striedavo  
**SLO** Privijajte izmenično.  
**HR** Naizmjerno zategnite  
**HU** Egy mástól függetlenül szorítandó  
**GR** Σφιγίγες ενολάξ  
**TR** Dönüşümlü sıkın

**中文** 交替拧紧

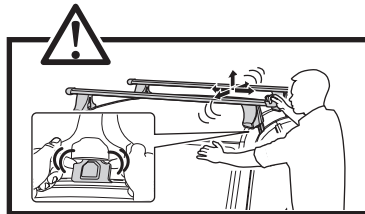
**한국어** 번갈아 가며 조이십시오.

**日本語** 交互に締め付けてください。

**ไทย** ชั้้นในแบบสลับ



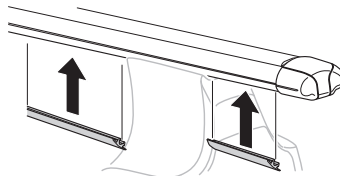
≈ 3 Nm

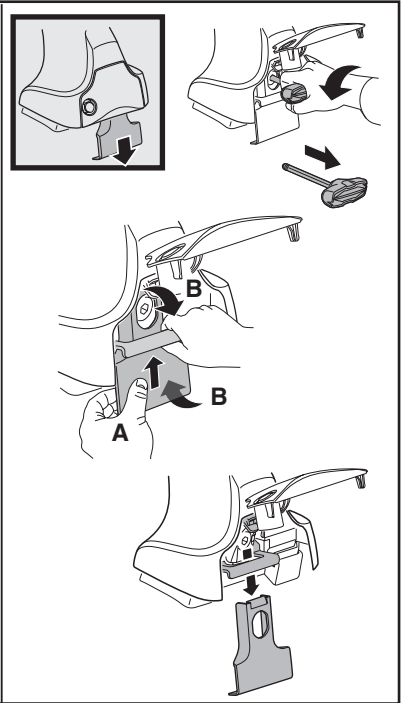
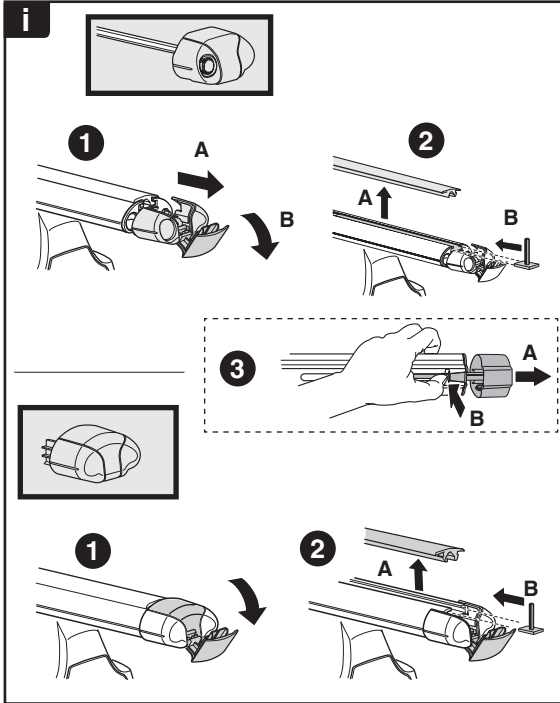
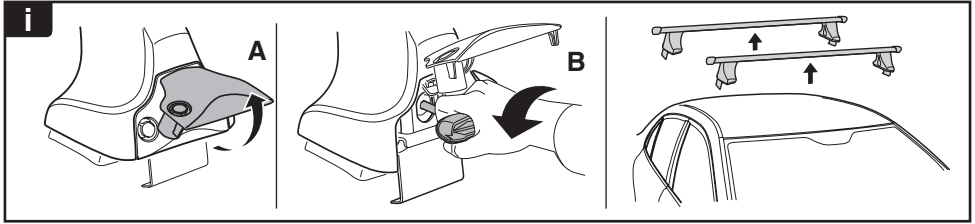


8

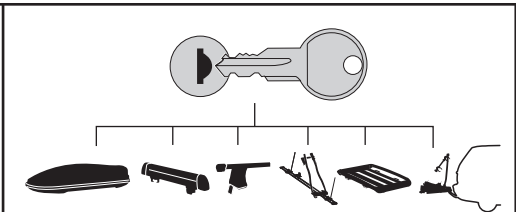


x1  
17 mm

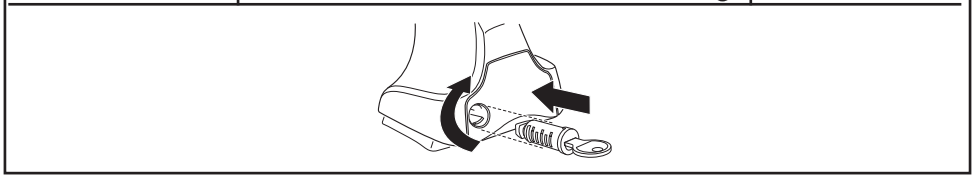




**THULE**  
SWEDEN  
**ONE  
KEY  
SYSTEM**



- 544** (x4)
  - 596** (x6)
  - 588** (x8)
  - 510** (x10)
  - 452** (x12)
- NA  
EUR  
ASIA



**WW** ▶ Thule Sweden AB, Box 69, 330 33 Hillerstorp, SWEDEN  
**NA** ▶ Thule Inc., 42 Silvermine Road, Seymour, Connecticut 06483, USA

info@thule.com  
 customer.service@thule.com

[www.thule.com](http://www.thule.com)