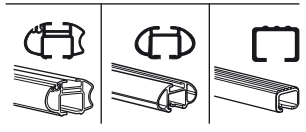
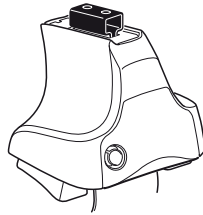


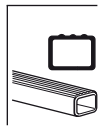
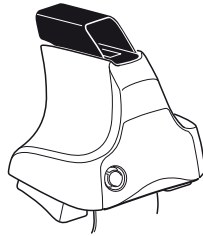
Kit 1350

TOYOTA Hilux, 4-dr Double Cab, 05–
TOYOTA Vigo, 4-dr Double Cab, 04–

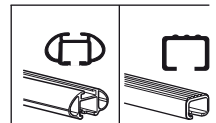
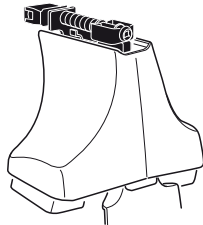
480R
754



480



750



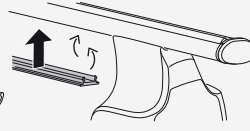
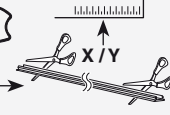
Kit



3



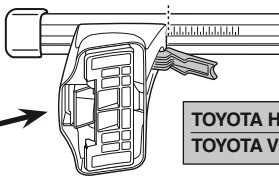
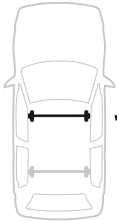
754



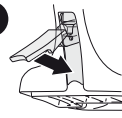
750



1

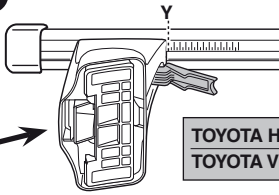


2

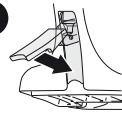


	X
TOYOTA Hilux, 4-dr Double Cab, 05–	41,5
TOYOTA Vigo, 4-dr Double Cab, 04–	41,5

1



2



	Y
TOYOTA Hilux, 4-dr Double Cab, 05–	42
TOYOTA Vigo, 4-dr Double Cab, 04–	42

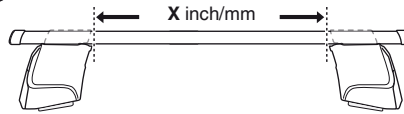
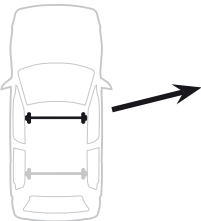


480R

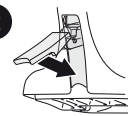


480

1

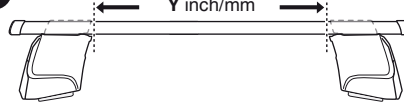
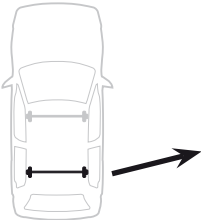


2

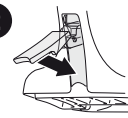


	X inch	X mm
TOYOTA Hilux, 4-dr Double Cab, 05–	42"	1066 mm
TOYOTA Vigo, 4-dr Double Cab, 04–	42"	1066 mm

1



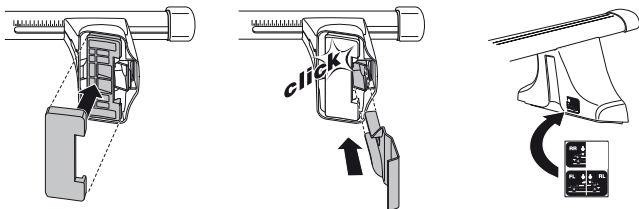
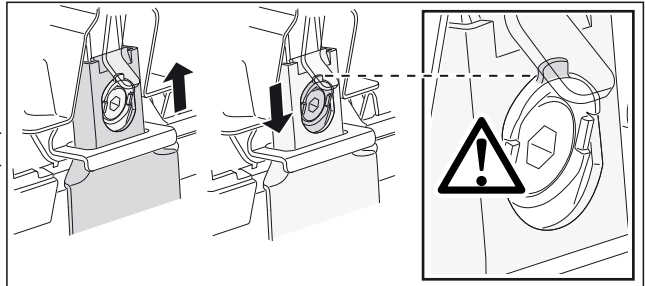
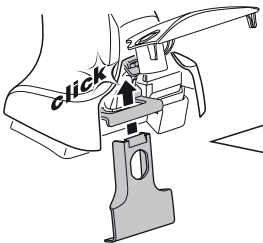
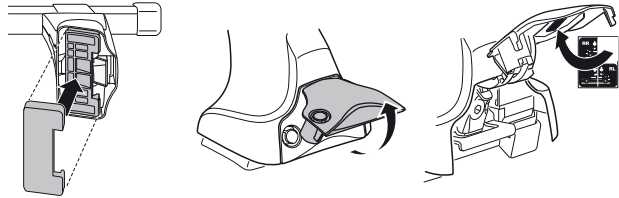
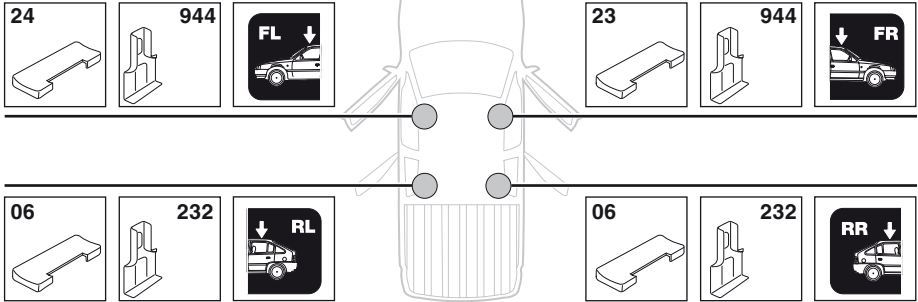
2



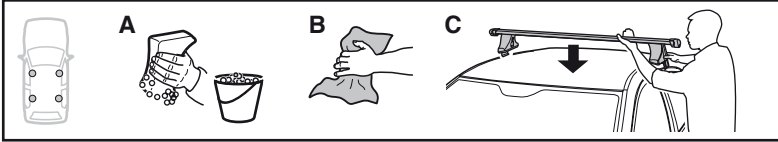
	Y inch	Y mm
TOYOTA Hilux, 4-dr Double Cab, 05–	42 1/8"	1071 mm
TOYOTA Vigo, 4-dr Double Cab, 04–	42 1/8"	1071 mm

4

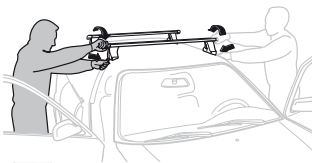
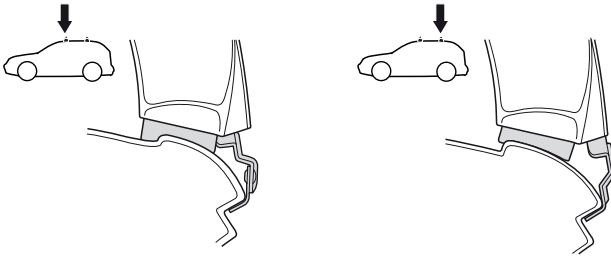
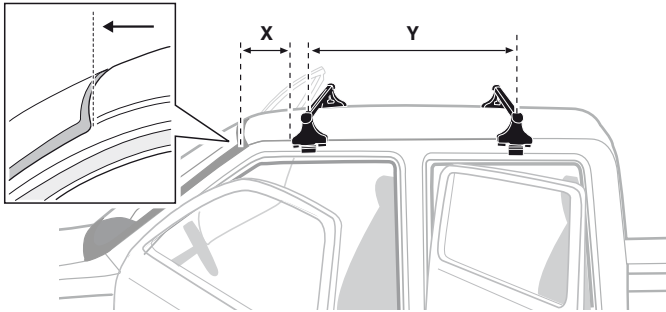
TOYOTA Hilux, 4-dr Double Cab, 05–
 TOYOTA Vigo, 4-dr Double Cab, 04–



5



	X mm	Y mm	X inch	Y inch
TOYOTA Hilux, 4-dr Double Cab, 05-	250 mm	720 mm	9 7/8"	28 3/8"
TOYOTA Vigo, 4-dr Double Cab, 04-	250 mm	720 mm	9 7/8"	28 3/8"



- GB/US** Tighten alternately
D Die Schrauben abwechselnd anziehen
F Serrer alternativement chaque côté
NL Afwisselend aan de linker- en de rechterkant aandraaien
I Alternare il serraggio delle viti
E Apretar alternativamente
PT Aperte alternadamente
S Dra åt växelvis
FIN Kierrä vuorotellen
EST Pinguldage vaheldumisi
LAT Pievelciēt pamīšus
LIT Užsukinėkite pakaitomis
PL Śruby dokręcaj naprzemiennie
RU Затягивайте попеременно

- CZ** Pokręťta bagażnika dokręcaj dokręcaj naprzemiennie.
SK Dotahujte striedavo
SLO Privijajte izmenično.
HR Naizmjenično zategnite
HU Egyarástól függetlenül szorítandó
GR Σφιγγετε εναλλάξ
TR Dönüşümlü sıkın

- 中文** 交替拧紧
한국어 번갈아 가며 조이십시오.
日本語 交互に締め付けてください。
ไทย ชับในแบบสลับ

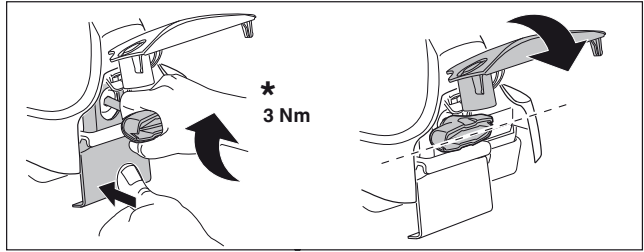
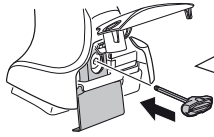
6



480R/754



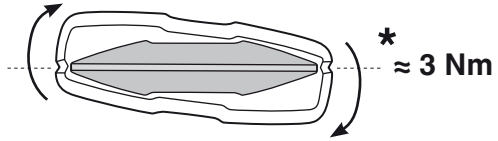
480



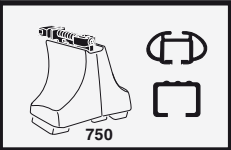
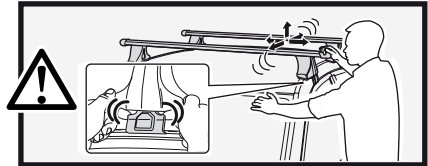
*
3 Nm



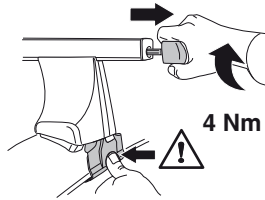
*



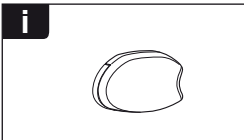
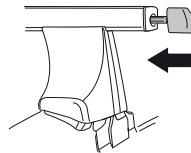
*
≈ 3 Nm



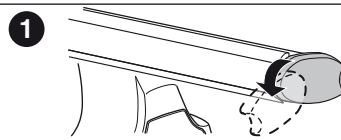
750



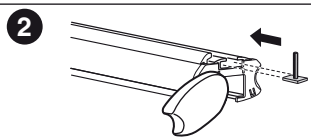
4 Nm



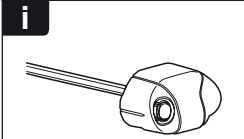
i



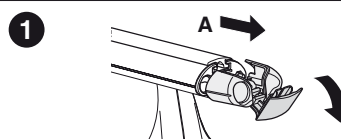
1



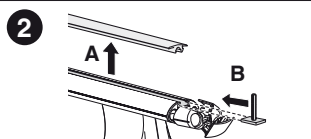
2



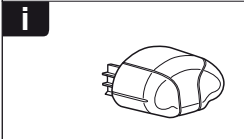
i



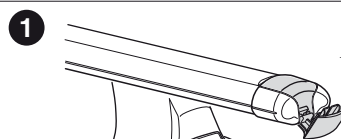
1



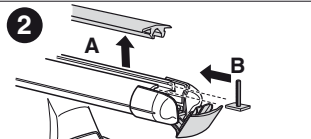
2



i



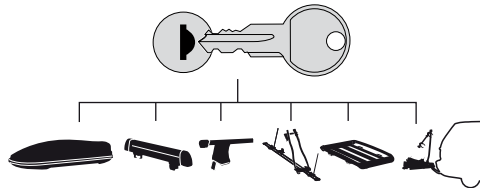
1



2



THULE
SWEDEN
**ONE
KEY
SYSTEM**



- 544 (x4)
- 596 (x6)
- 588 (x8)
- NA 510 (x10)
- EUR 452 (x12)
- ASIA



WW ▶ Thule Sweden AB, Box 69, 330 33 Hillerstorp, SWEDEN
NA ▶ Thule Inc., 42 Silvermine Road, Seymour, Connecticut 06483, USA

info@thule.com
customer.service@thule.com

www.thule.com



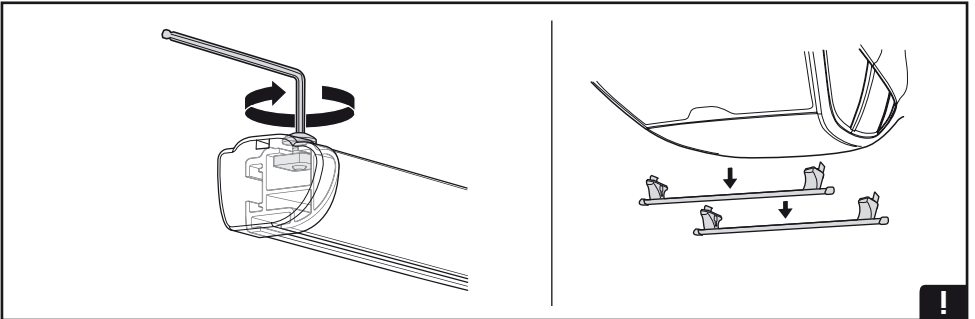
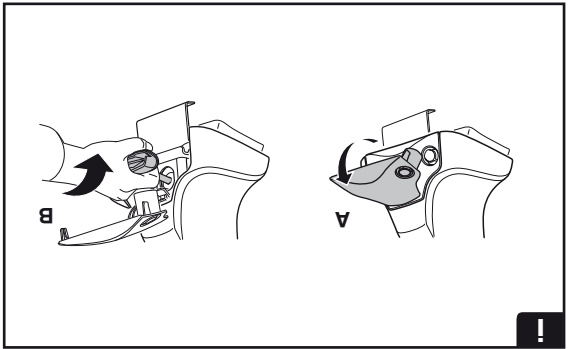
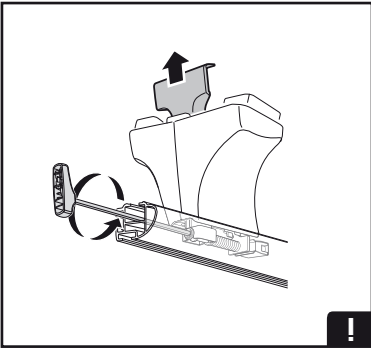
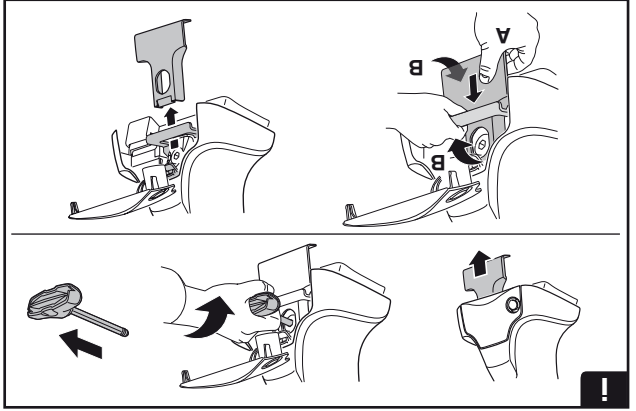
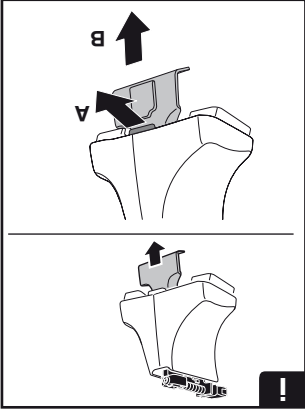
www.thuleprofessional.com

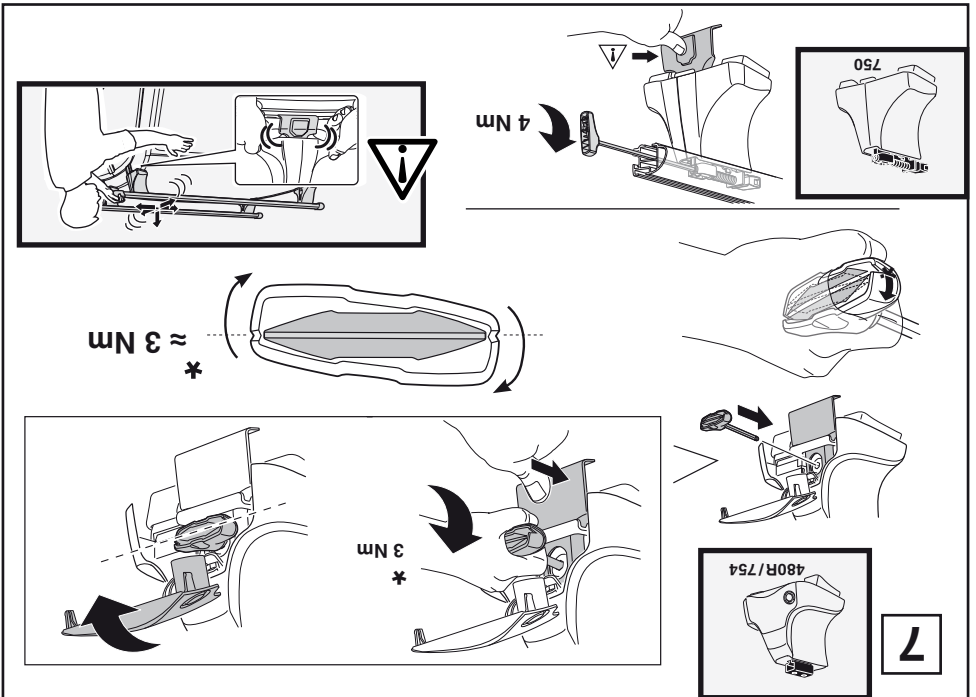
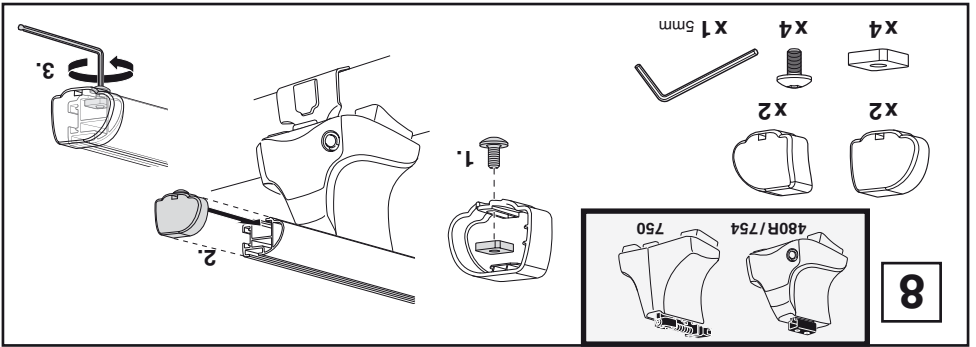
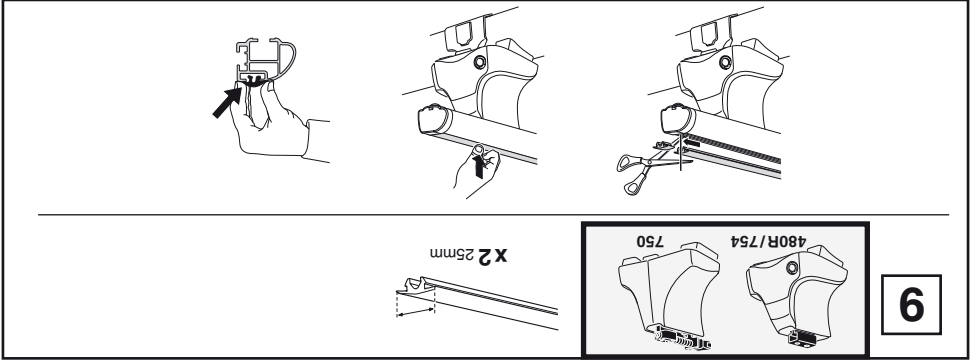


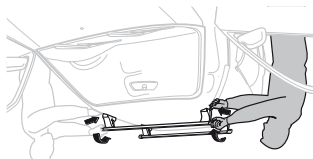
[info@thule.com](mailto:customer.service@thule.com)
customer.service@thule.com



Thule Sweden AB, Box 69, 330 33 Hillerstorp, SWEDEN
Thule Inc., 42 Silvermine Road, Seymour, Connecticut 06483, USA

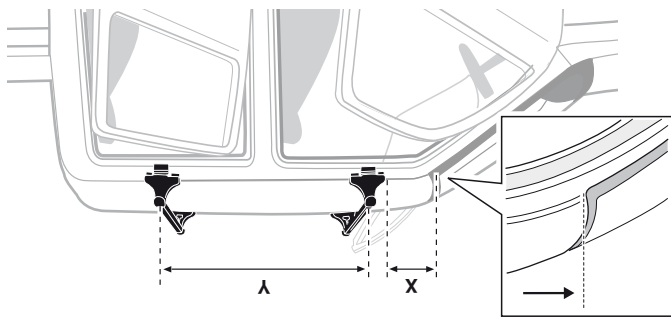
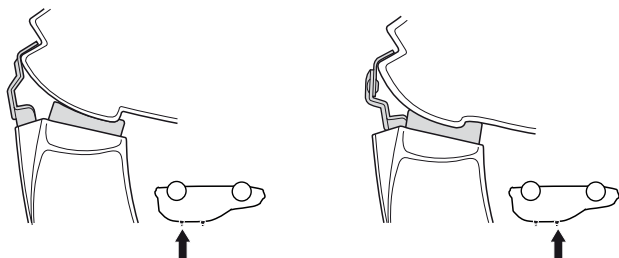




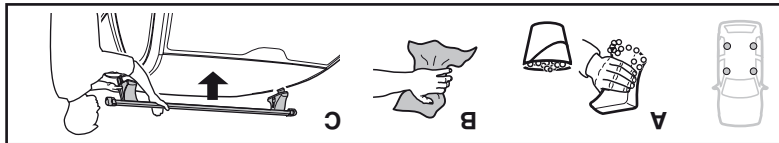


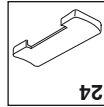
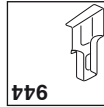
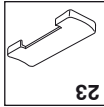
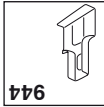
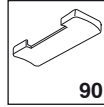
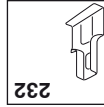
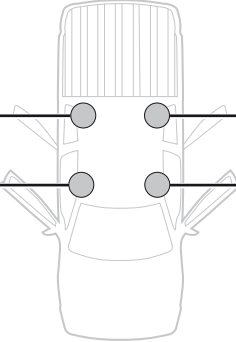
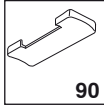
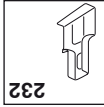
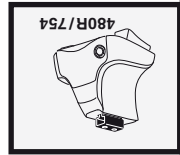
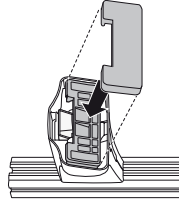
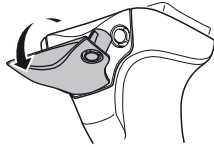
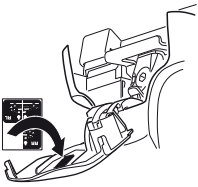
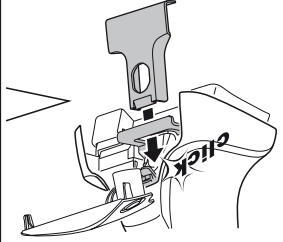
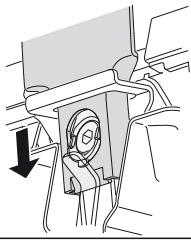
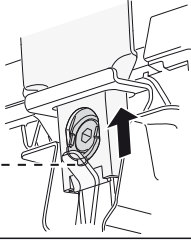
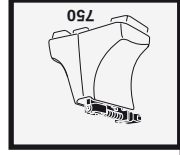
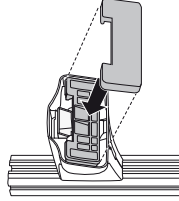
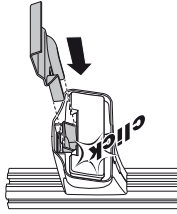
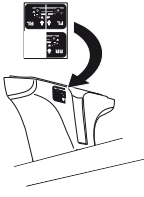
- GB/US Tighten alternately
- D Die Schrauben abwechselnd anziehen
- F Serrer alternativement chaque côté
- NL Afwisselend aan de linker- en de rechterkant aandraaien
- I Alternare il serraggio delle viti
- E Aperte alternadamente
- PT Aperte alternadamente
- S Dra åt växelvis
- FIN Kierrä vuorotellen
- EST Pinguldage vaheldumisi
- LAT Pielieciet pamāsus
- LIT Užskinkite pakaitomis
- PL Study dokrecaj naprzemiennie
- RU Затягивайте попеременно

- CZ Pokrétla bagazníka dokrecaj
- SK Dotiahnuť streďadovo dokrecaj naprzemiennie.
- SLO Priljajle izmenično.
- HR Priljajle izmenično.
- HU Egymástól fűggetlenül szorítandó
- GR Σφιγγείτε εναλλάξ
- TR Döngümlü skin
- 中文 交替拧紧
- 한국어 변경이 가며 조이십시오.
- 日本語 交互に締め付けてください。
- ไทย เปลี่ยนไปมา

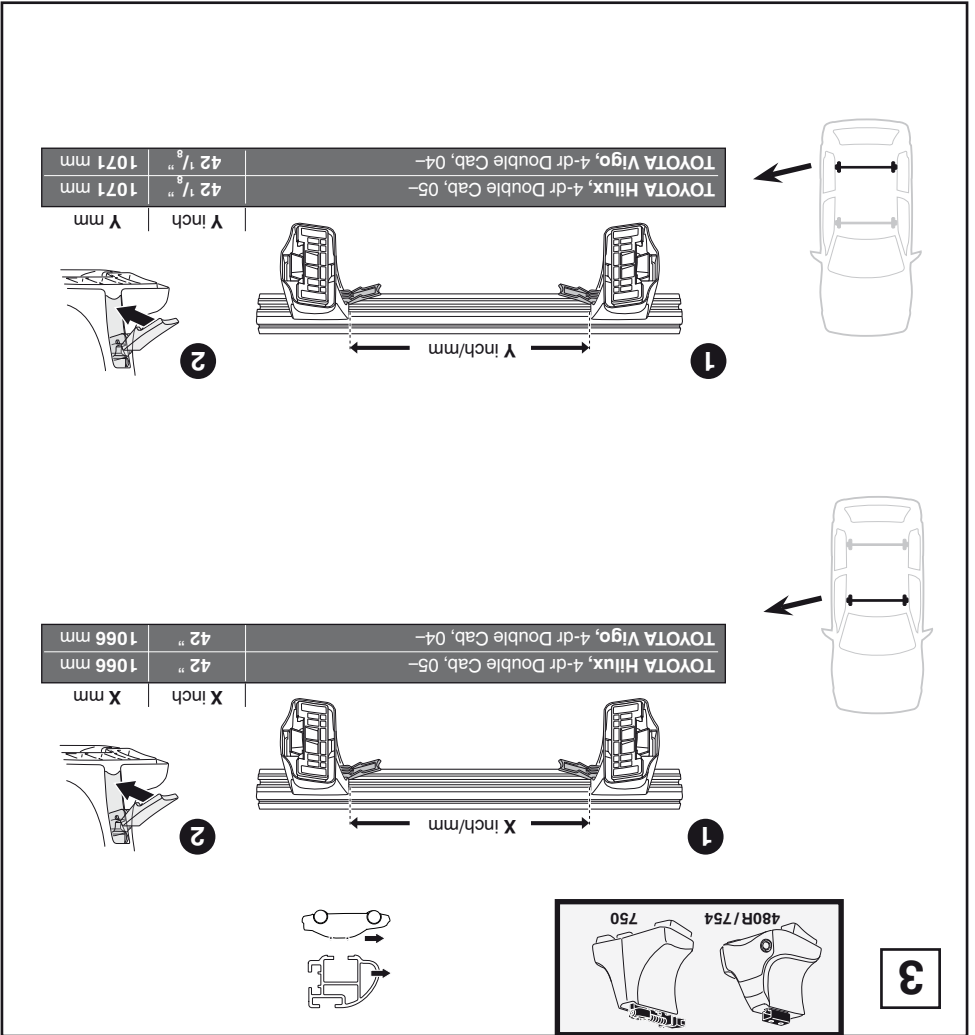
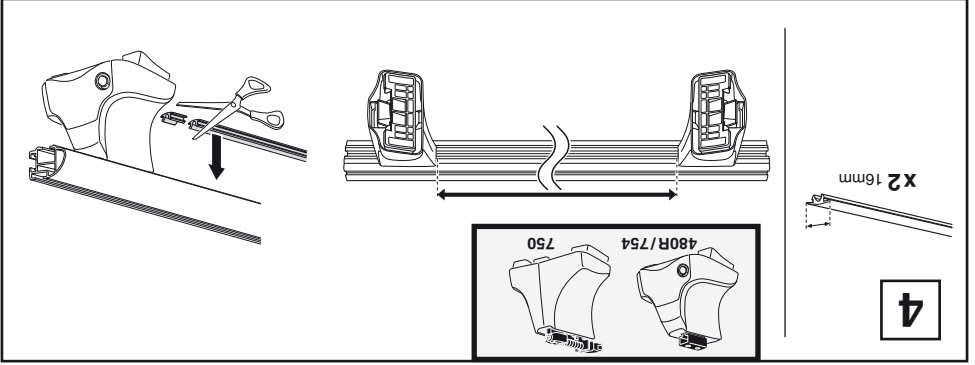


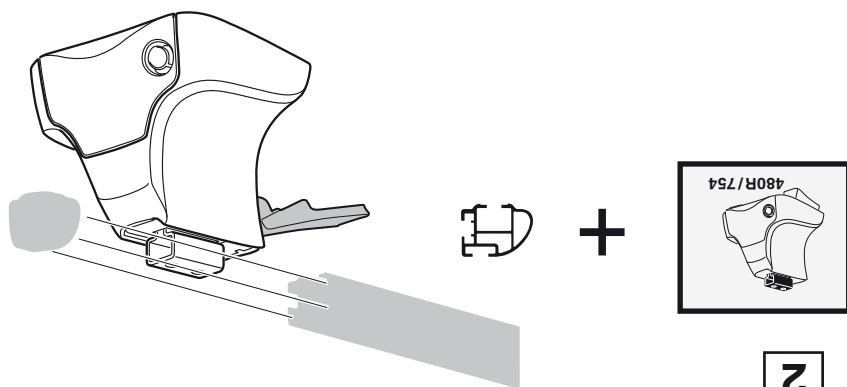
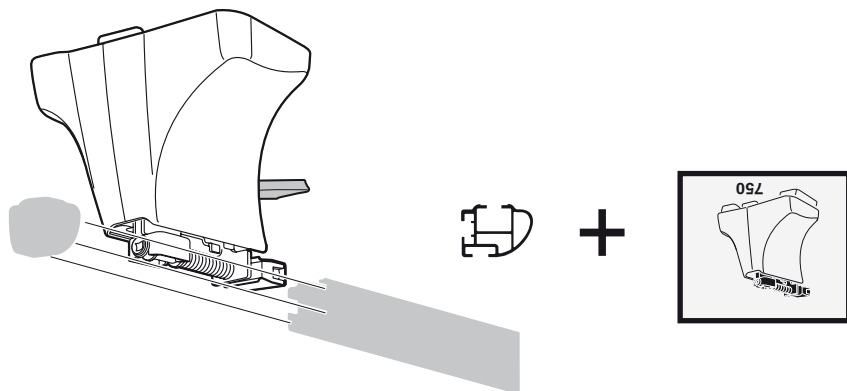
TOYOTA Hilux, 4-dr Double Cab, 05-	250 mm	720 mm	9 7/8"	28 3/8"
TOYOTA Vigo, 4-dr Double Cab, 04-	250 mm	720 mm	9 7/8"	28 3/8"
	X mm	Y mm	X inch	Y inch



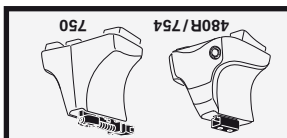
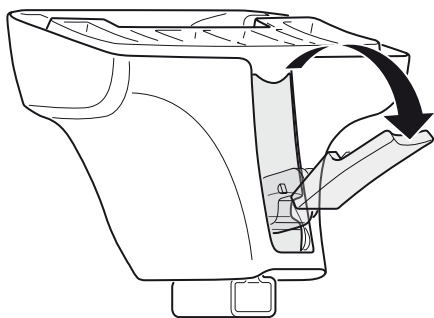


TOYOTA Hilux, 4-dr Double Cab, 05-
TOYOTA Vigo, 4-dr Double Cab, 04-

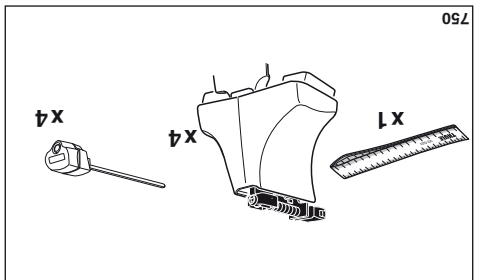
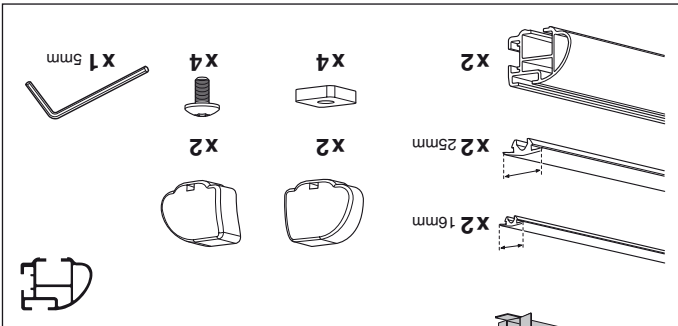
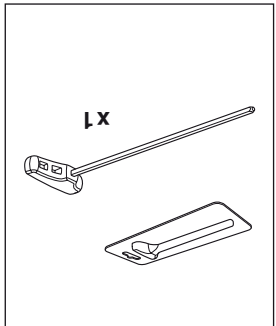
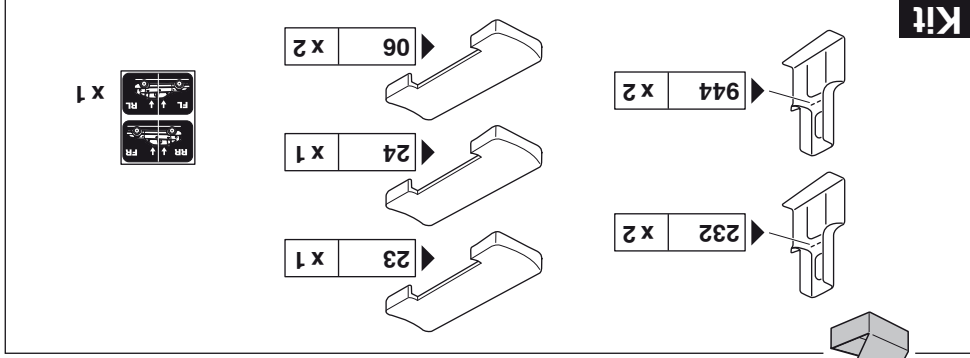




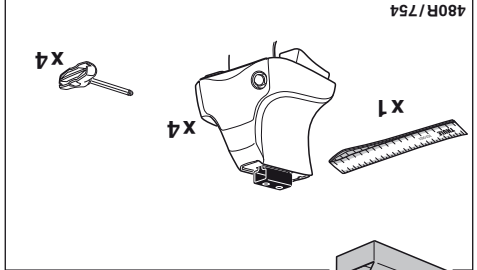
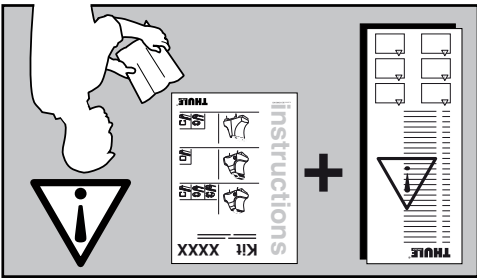
2



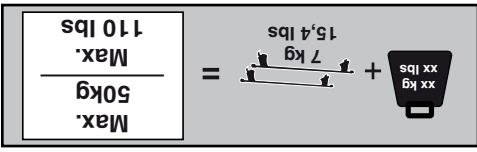
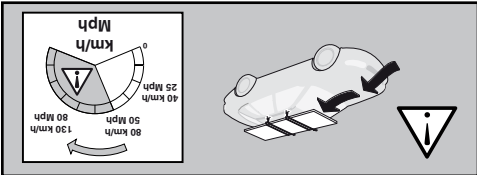
1



750



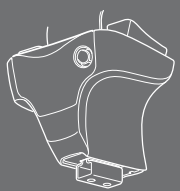
480R/754



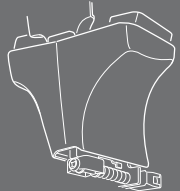
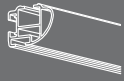
instructions

Kit 1350

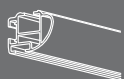
TOYOTA Hilux, 4-dr Double Cab, 05-
TOYOTA Vigo, 4-dr Double Cab, 04-



480R
754



750



ISO 11154-E

THULE
SWEDEN

PROFESSIONAL