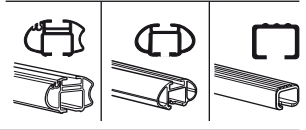
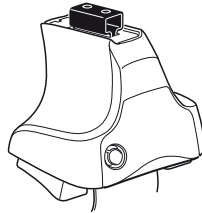


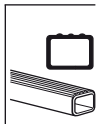
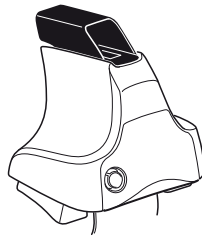
Kit 1266

SEAT Cordoba, 4-dr Sedan, 03–
SEAT Ibiza, 3-dr Hatchback, 02-07
SEAT Ibiza, 5-dr Hatchback, 02-07

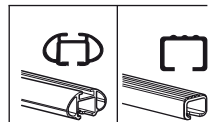
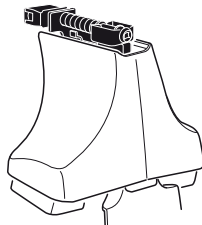
480R
754



480



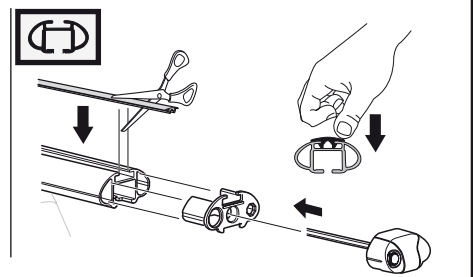
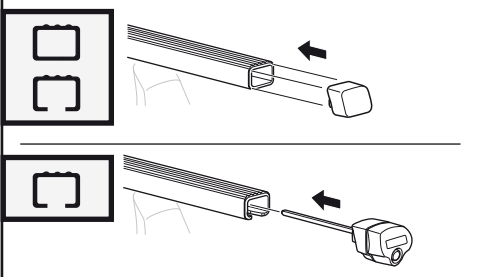
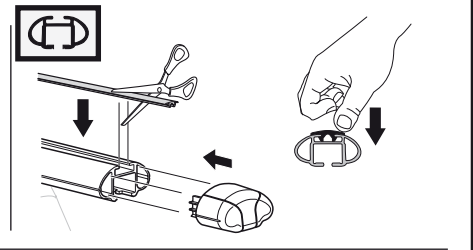
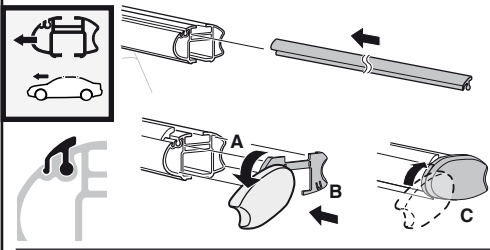
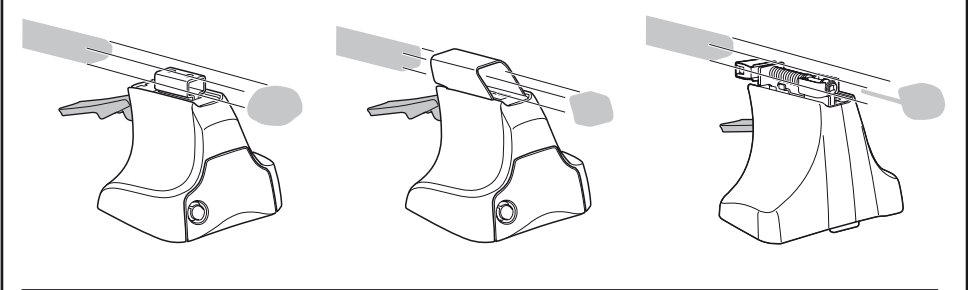
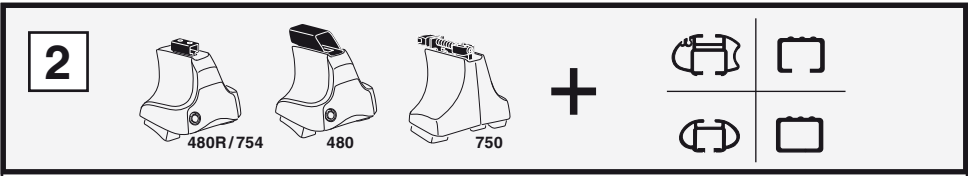
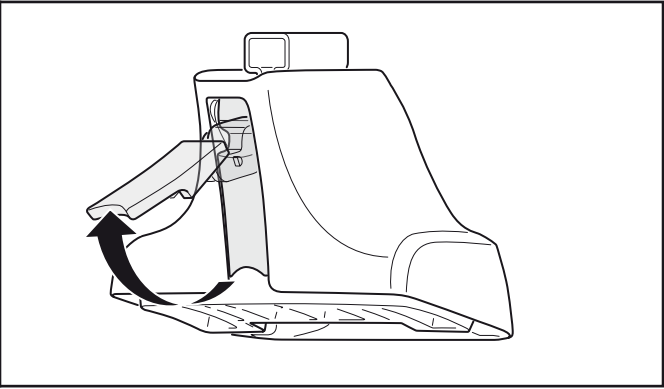
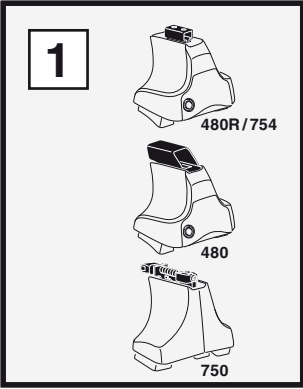
750



x2 x2 x2 x4	x2	x2 x2 x4 x4	x2 x2	x2

079 x 4
150 x 2
03 x 2
99 x 1
100 x 1
x 1

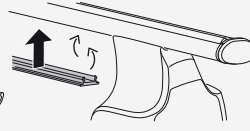
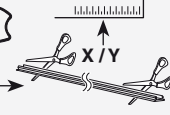
Kit



3

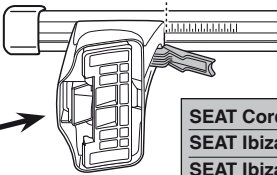
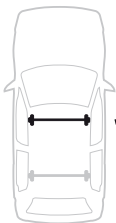


754

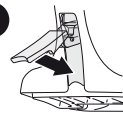


750

1

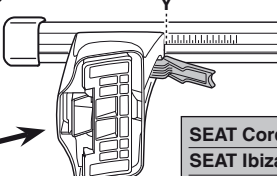


2

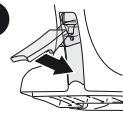


	X
SEAT Cordoba, 4-dr Sedan, 03-	26,5
SEAT Ibiza, 3-dr Hatchback, 02-07	27
SEAT Ibiza, 5-dr Hatchback, 02-07	27

1



2



	Y
SEAT Cordoba, 4-dr Sedan, 03-	25,5
SEAT Ibiza, 3-dr Hatchback, 02-07	25,5
SEAT Ibiza, 5-dr Hatchback, 02-07	25,5

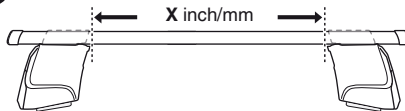
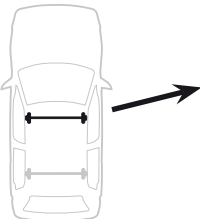


480R

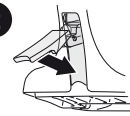


480

1

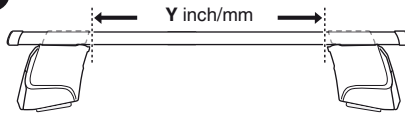
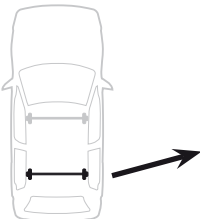


2

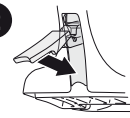


	X inch	X mm
SEAT Cordoba, 4-dr Sedan, 03-	36 1/8"	916 mm
SEAT Ibiza, 3-dr Hatchback, 02-07	36 1/4"	921 mm
SEAT Ibiza, 5-dr Hatchback, 02-07	36 1/4"	921 mm

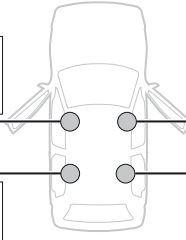
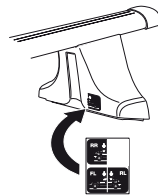
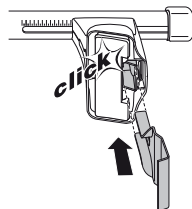
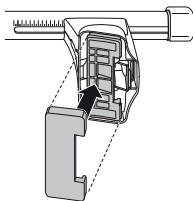
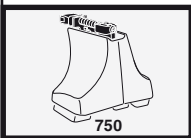
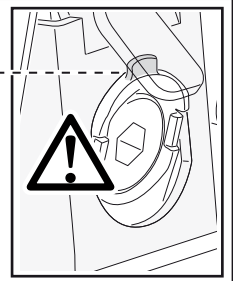
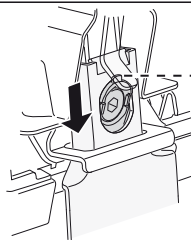
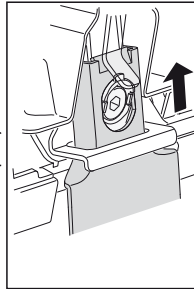
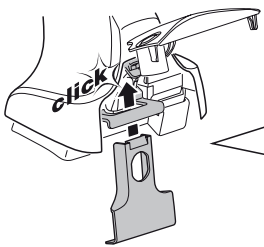
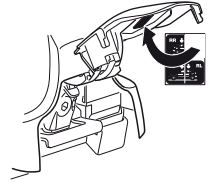
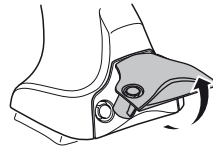
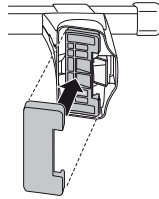
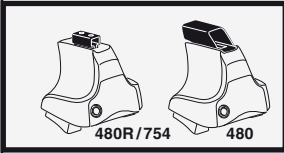
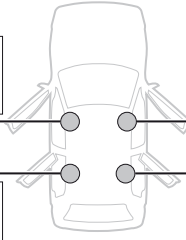
1



2



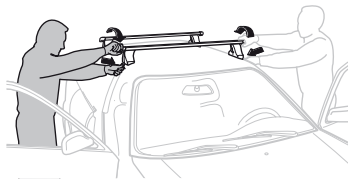
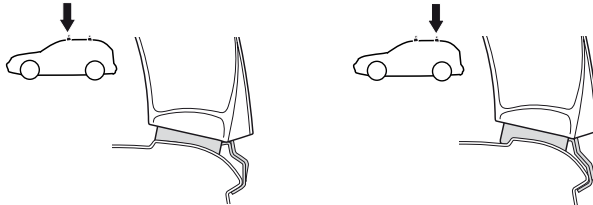
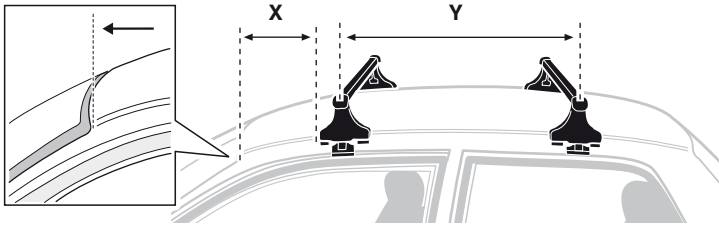
	Y inch	Y mm
SEAT Cordoba, 4-dr Sedan, 03-	35 5/8"	906 mm
SEAT Ibiza, 3-dr Hatchback, 02-07	35 5/8"	906 mm
SEAT Ibiza, 5-dr Hatchback, 02-07	35 5/8"	906 mm

4**SEAT Ibiza, 3-dr Hatchback, 02-07****SEAT Cordoba, 4-dr Sedan, 03-
SEAT Ibiza, 5-dr Hatchback, 02-07**

5



	X mm	Y mm	X inch	Y inch
SEAT Cordoba, 4-dr Sedan, 03–	250 mm	670 mm	9 7/8"	26 3/8"
SEAT Ibiza, 3-dr Hatchback, 02-07	190 mm	720 mm	7 1/2"	28 3/8"
SEAT Ibiza, 5-dr Hatchback, 02-07	250 mm	670 mm	9 7/8"	26 3/8"



GB/US Tighten alternately

D Die Schrauben abwechselnd anziehen

F Serrer alternativement chaque côté

NL Afwisselend aan de linker- en de rechterkant aandraaien

I Alternare il serraggio delle viti

E Apretar alternativamente

PT Aperte alternadamente

S Dra åt växelvis

FIN Kierrä vuorotellen

EST Pinguldage vaheldumisi

LAT Pielieciet pamišus

LIT Užsukinėkite pakaitomis

PL Śruby dokręcaj naprzemiennie

RU Затягивайте попеременно

CZ Pokręťta bagażníka dokręcaj dokręcaj naprzemiennie.

SK Doťahujte striedavo

SLO Privijajte izmenično.

HR Naizmjenično zategnite

HU Egymástól függetlenül szorítandó

GR Σφίγγετε εναλλάξ

TR Dönüşümlü sıkın

中文 交替拧紧

한국어 번갈아 가며 조이십시오.

日本語 交互に締め付けてください。

ไทย ชั้้นโน้บแบบสลับ

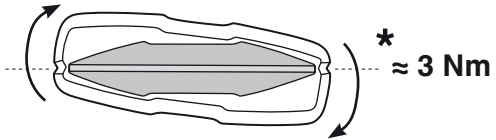
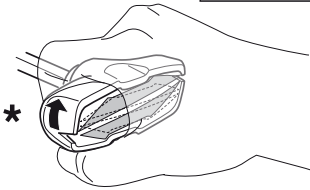
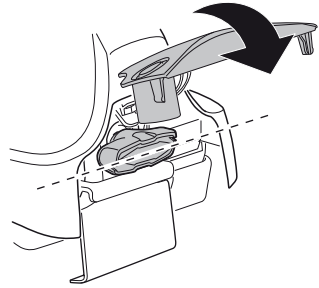
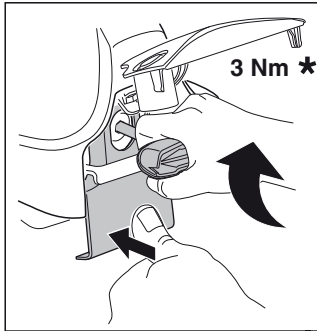
6



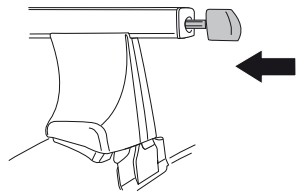
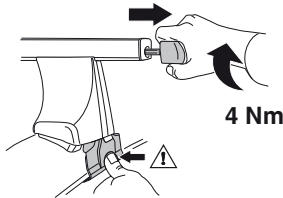
480R/754



480



750



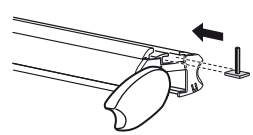
i



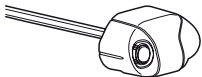
1



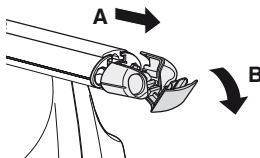
2



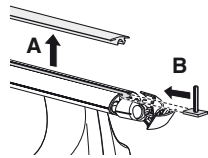
i



1



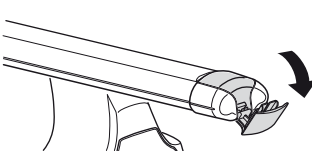
2



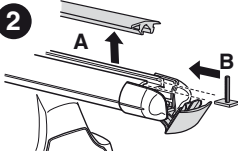
i



1



2





THULE
SWEDEN
**ONE
KEY
SYSTEM**



		(x4)
		(x6)
		(x8)
NA		(x10)
EUR		(x12)
ASIA		(x12)



WW ▶ Thule Sweden AB, Box 69, 330 33 Hillerstorp, SWEDEN
NA ▶ Thule Inc., 42 Silvermine Road, Seymour, Connecticut 06483, USA

info@thule.com
customer.service@thule.com

www.thule.com