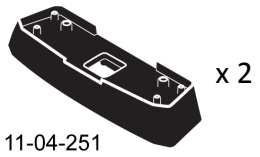
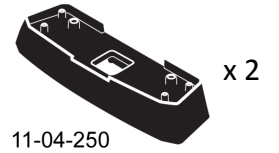
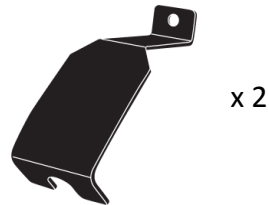
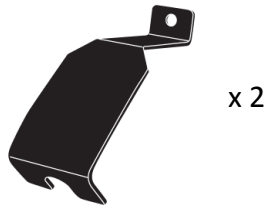
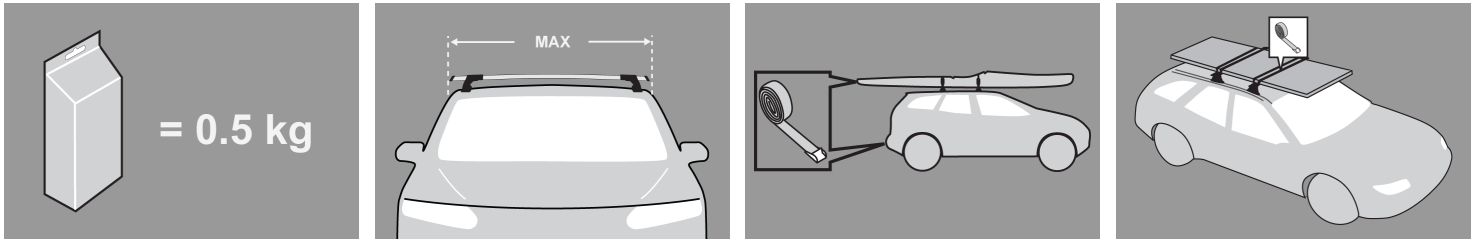
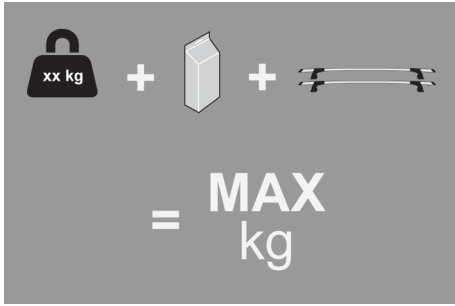




GB Fitting Instructions for Basic Carrier





MAX kg
 W/P WHD

MAX kg
 W/P WHD

Audi
 A5 Sportback, 5dr Coupe 09-+
 A5 Sportback, 5dr Coupe 09-+
 A5 Sportback, 5dr Coupe 09-+

ZA	75	75
EU	75	75
AU	75	75

A5 Sportback, 5dr Coupe 09-+
 A5 Sportback, 5dr Coupe 09-+

US	75	75
NZ	75	75

First Time Installation



- Remove parts from packaging and check contents. Contact your Prorack dealer if parts are missing or damaged.



- This kit fits type A, B, C and D.
- These instructions show type A crossbar fitted. They also apply to type B, C and D.

NOTE: Clamp images in these instructions may not be representative of the clamps in this kit



- Use keys to remove covers.



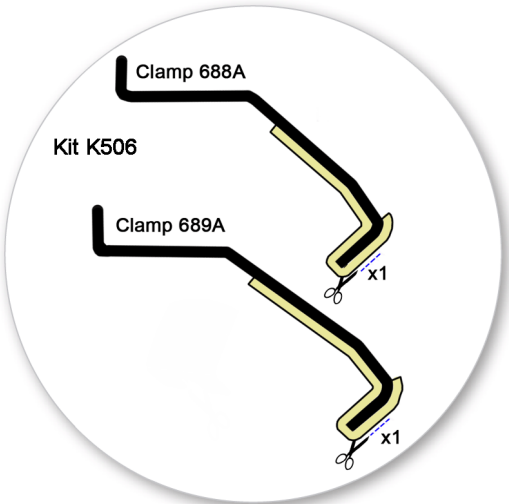
- Use hex screwdriver to reverse adjusting screw 10 turns.



- Press adjusting screw and pull crossbar legs out. Refer to the crossbar instructions for crossbar adjustment.
- Ensure each end of the crossbar is adjusted equally.



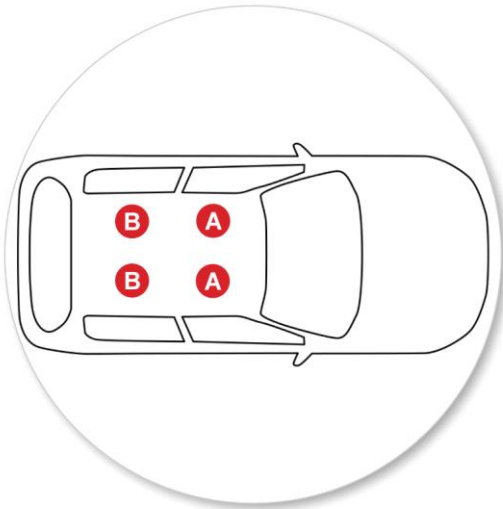
- Remove locking screw.



- Apply protective strip as shown.
Trim if required.



- Cut protective strip as shown.



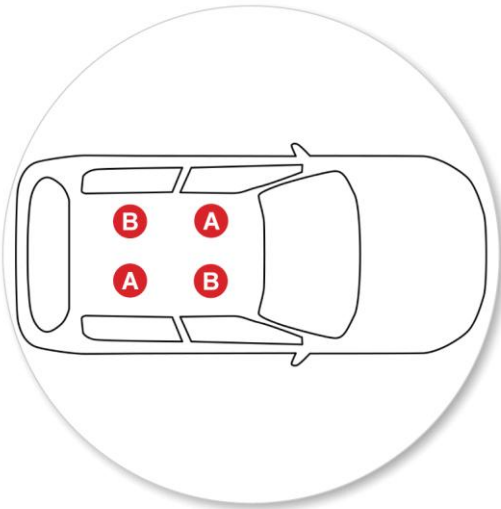
- It is important to put the clamps in the correct position on the vehicle.
- Letters refer to the part numbers stamped on clamps.
- Clamp Part Number:
A = 688
B = 689



- Attach clamp to each leg. NOTE; clamps may have labels showing their positions on the vehicle (For example; "Front Right").



- Refit locking screw so that it goes through the hole in the clamp. Do not begin to tighten the locking screw.



- It is important to put the pads in the correct position on the vehicle.
- Letters refer to the pad part numbers and position.
- Pad Part Number:
A = 11-04-250
B = 11-04-251



- Fit rubber pads (supplied with fitting kit) to foot. Pad may vary in shape to that shown.



- Make sure the pad fits into the holes underneath the foot.



- Clamps onto anchor points under rubber door frame mouldings
- The rubber seal must be peeled back from the vehicle body to allow the clamp to be inserted between the vehicle body and the rubber seal.

Fitment



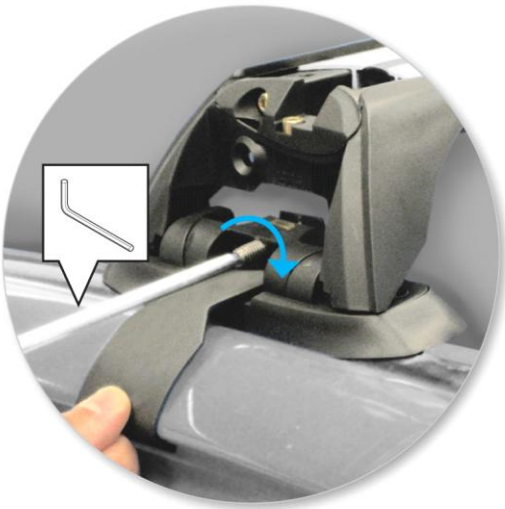
- Place crossbar on vehicle. Minimum recommended spacing between the bars is 700mm (unless otherwise stated).
- Please check the rear of this manual for information relating specifically to your vehicle.



- Press adjusting screw to adjust the leg positions on the crossbar.



- Tighten adjusting screw to 5 Nm.



- Tighten locking screw on both legs evenly.



- Check crossbar is securely attached to the vehicle.



- Use keys to fit and lock covers

CAUTION:
**Recheck all fasteners immediately after a load is applied to the crossbars.
Regularly check screws are tight.**

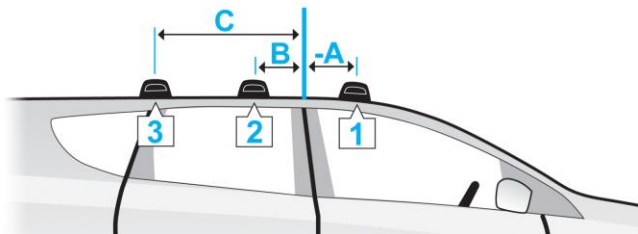
- Clean the car roof and surfaces of the product that will be in contact with the car roof.
- Follow the fitting instructions for fitting the product to your vehicle. Make sure all steps are carried out in order.
- Set crossbars a minimum distance of 700mm apart where no other distance is specified in the fitting instructions. This is especially important when carrying long loads.
- Check unit is securely attached whenever you refit it to the vehicle. If the unit feels loose, refer to the fitting instructions and readjust.
- Some sunroofs and radio antennae cannot be used when the product is fitted.
- Do not modify this product.
- Refer to the maximum permitted load capacity specified in the fitting instructions. Do not exceed the vehicle manufacturers roof load rating if it is lower than the maximum load capacity specified in the fitting instructions.
- Loads should not overhang the sides of the product and be evenly distributed with the lowest possible centre of gravity.
- Long loads should be secured with non-elastic straps to the front and rear of the vehicle.
- Objects with pointed ends (skis) should be carried with the pointed ends to the rear of the vehicle.
- Remove all loose or removable objects from the load prior to loading.
- Make sure all loads are securely fastened with non-elastic straps. Check regularly during longer journeys.

- A loaded roof rack system can alter the performance of your vehicle. Be especially aware of the effects of side winds, changing of direction, and braking performance. Avoid rapid acceleration and deceleration. Drive carefully.
- Note that the total height of the vehicle increases when upright loads are carried.
- Products should be locked during transport if they have locks fitted.
- Check and replace worn out or defective parts.
- Keep the product clean and maintained.
- Never drive into a car wash with the roof rack system fitted.
- Lubricate locks and adjusting screws at regular intervals.
- Remove the products from the vehicle when not in use. Make sure all loose parts are stored safely.

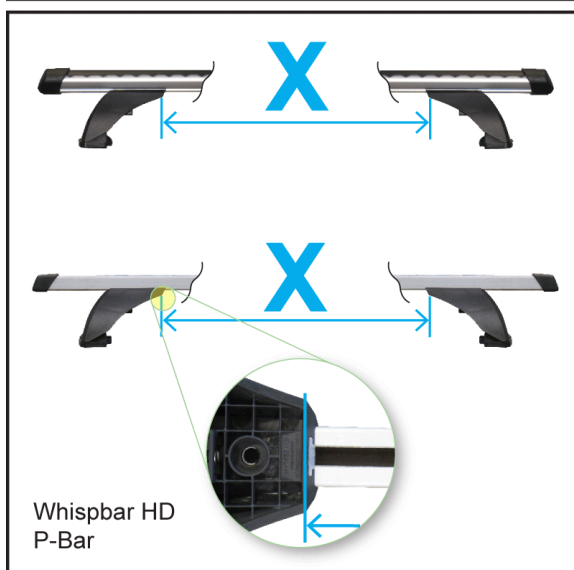
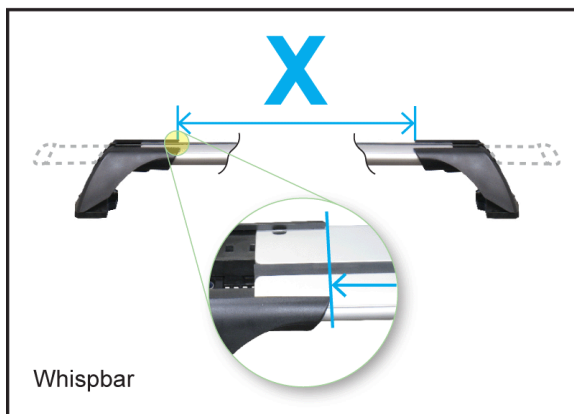
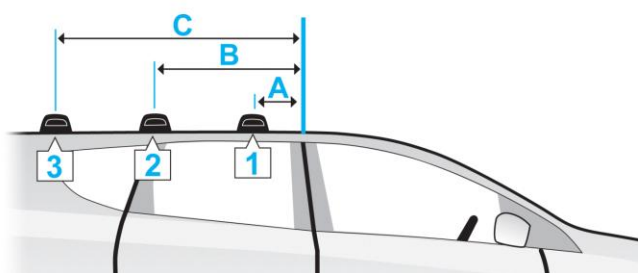
● Hubco Automotive Ltd
P. O. Box 11017
Christchurch
NEW ZEALAND

www.whispbar.com

A = -



A = +



- Audi A5 Sportback, 5dr Coupe 09+ (AU)
- Audi A5 Sportback, 5dr Coupe 09+ (EU)
- Audi A5 Sportback, 5dr Coupe 09+ (NZ)
- Audi A5 Sportback, 5dr Coupe 09+ (US)
- Audi A5 Sportback, 5dr Coupe 09+ (ZA)

	A	B	C	X		
				1	2	3
Audi A5 Sportback, 5dr Coupe 09+ (AU)	-30cm	40cm	-	895mm	870mm	-
Audi A5 Sportback, 5dr Coupe 09+ (EU)	-30cm	40cm	-	895mm	870mm	-
Audi A5 Sportback, 5dr Coupe 09+ (NZ)	-30cm	40cm	-	895mm	870mm	-
Audi A5 Sportback, 5dr Coupe 09+ (US)	-30cm	40cm	-	895mm	870mm	-
Audi A5 Sportback, 5dr Coupe 09+ (ZA)	-30cm	40cm	-	895mm	870mm	-
	-11 13/16ths"	15 3/4"	-	35 1/4"	34 1/4"	-
	-11 13/16ths"	15 3/4"	-	35 1/4"	34 1/4"	-
	-11 13/16ths"	15 3/4"	-	35 1/4"	34 1/4"	-
	-11 13/16ths"	15 3/4"	-	35 1/4"	34 1/4"	-